

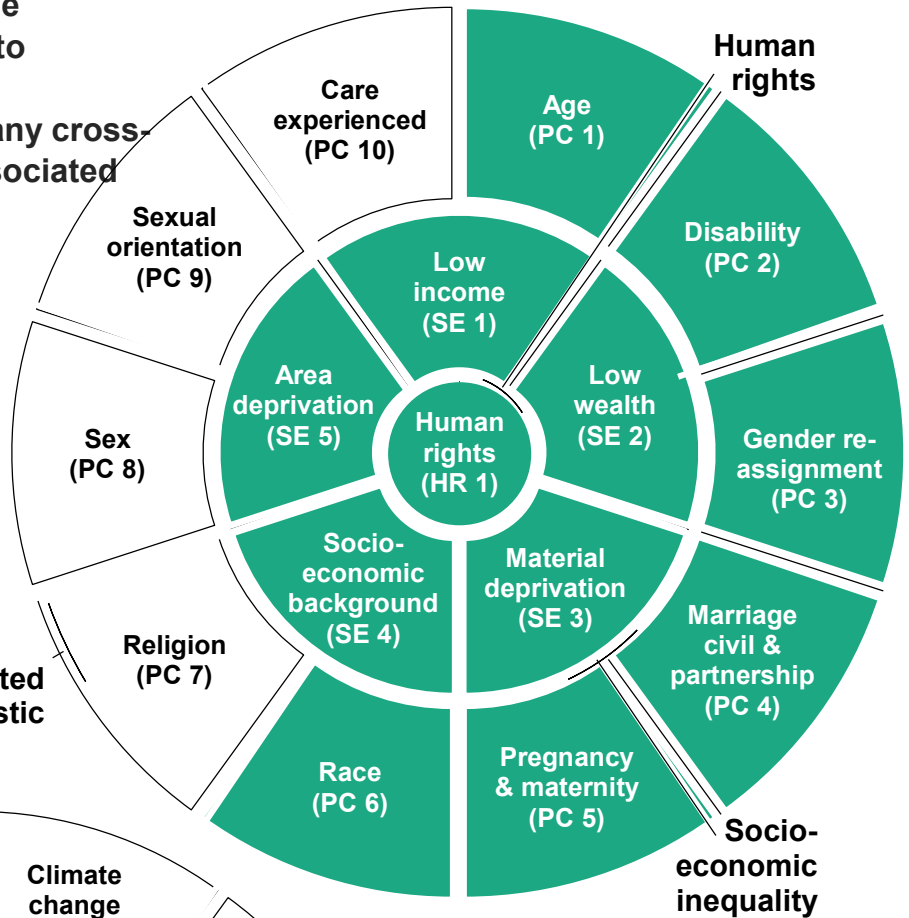
# Integrated Impact Assessment Summary Report

This integrated impact assessment is being completed as part of the Carers Strategy refresh to assess the possible impacts in relation to equalities and human rights, environmental impacts and any cross-cutting themes or issues associated

Completed by:

Steven Kelly,  
Carers Lead Officer/Quality Assurance Officer,  
Planning and Performance

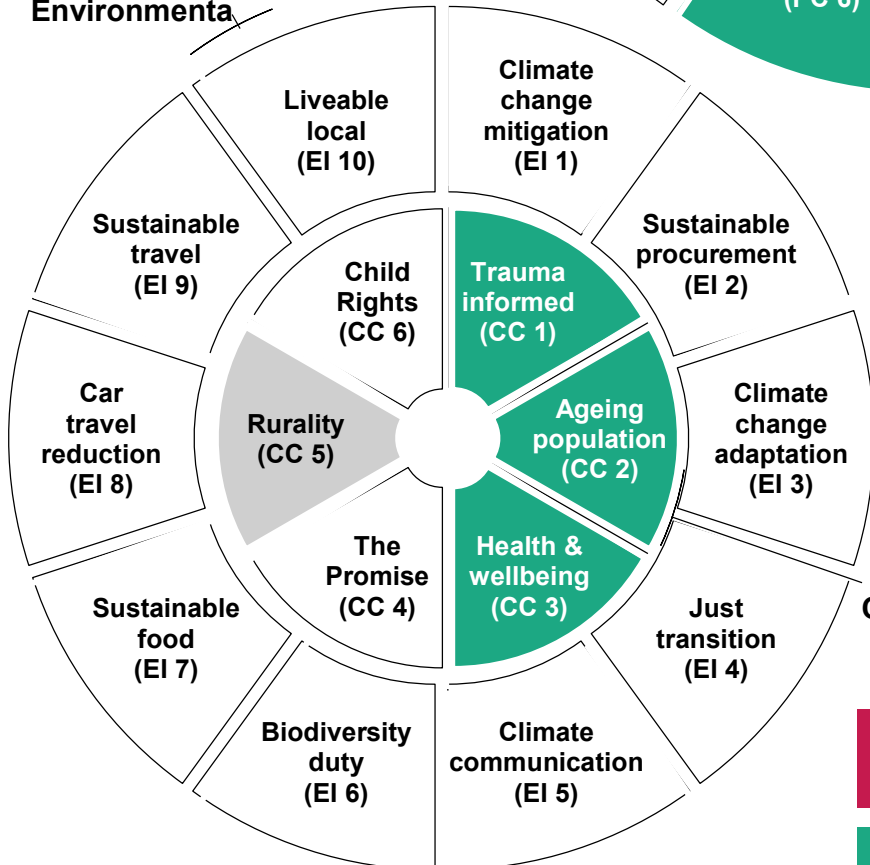
Date started 05/06/25



Protected characteristic

Socio-economic inequality

Environmenta



Cross-Cutting

To be implemented on:

08/10/25

Review date:

08/10/26

Oversight Panel:

Performance and Audit Committee

negative impact	uncertain / not clear
positive impact	no impact / not applicable

### **Public sector equality duty**

---

Eliminating unlawful discrimination, harassment, and victimisation?

The new Adult Carer Strategy seeks to mainstream equalities in its overarching outcomes and will ensure that any subsequent action points do not disproportionately disadvantage one community or group over another. South Ayrshire CPP is committed to eliminating discrimination and stigmatisation and the structure which has been put in place will play a positive role in the contribution towards this vision, supporting our communities and citizens to grow, care and live a better life in South Ayrshire.

---

Advancing equality of opportunity?

The new Adult Carer Strategy is inclusive of everyone and ensure equality of opportunity to improve outcomes. The CPPs seek to encourage and improve participation through our Champions Board and Community Planning Participation and Engagement Group which represents 'communities of interest' across South Ayrshire.

---

Fostering good relations?

The new Adult Carer Strategy is inclusive of everyone and ensure equality of opportunity to improve outcomes. The CPP seeks to encourage and improve participation through our Champions Board and Community Planning Participation and Engagement Group which represents 'communities of interest' across South Ayrshire.

---

### **Consultation declaration**

We confirm consultation has been carried out as part of this process.

---

**impacts)**

---

## **CROSS-CUTTING IMPACTS**

<b>CC 5</b>	Rurality	Consideration of Carers will be considered at locality level with the opportunity for this to be captured within locality plans specific to each area. This strategy, through the delivery of defined actions, will look to support rural communities by enhancing access to services that address the specific challenges of geographic isolation and limited transportation.
-------------	----------	--