

Needs Assessment

South Ayrshire HSCP

January 2022

Table of Contents	
Summary Table.....	6
Notes for this profile:	9
Demographics.....	10
Summary:.....	10
Population	10
Figure 1: Population breakdown in South Ayrshire HSCP.	10
Figure 2: Population time trend and projection.....	11
Figure 3: Change in population structure over the last five years.	12
Figure 4: Projected change in population structure between 2022 and 2027.	12
Dependency Ratio.....	13
Figure 5: Dependency ratio by geographical area, 2020	13
Deprivation	13
Table 1: Percentage population living in the 2016 and 2020 SIMD Datazone Quintiles	13
Figure 6: Map of Data Zones within South Ayrshire coloured by SIMD quintiles.	14
Figure 7: Proportion of the population that reside in each 2020 SIMD quintile by domain.	15
Figure 8: Percentage population living in the 2016 and the 2020 SIMD and Domain Quintiles	16
Households.....	17
Summary:.....	17
Figure 9: Number of dwellings time trend.....	17
Table 2: Breakdown of dwelling types by year for South Ayrshire HSCP.	18
Figure 10: Breakdown of households by council tax band for South Ayrshire HSCP in 2020.	18
Table 3: Percentage of households by council tax band for South Ayrshire in 2020.....	18
Services	19
Figure 11: Map of GP practices by locality in South Ayrshire HSCP ²	19
Table 4: Number of each type of service in South Ayrshire HSCP ²	19
General Health.....	20
Summary:.....	20
Life Expectancy	20
Figure 12: Average life expectancy in men and women over time.	20
Table 5: Average life expectancy in years for the latest time periods (2016-2018 aggregated years for all areas).	21
Figure 13: Average Healthy Life Expectancy at birth	21
Figure 14: Average Healthy Life expectancy in men and women over time.....	22
Deaths, aged 15-44.....	23
Figure 15: Deaths aged 15-44 years by geographical area and over time.....	23

Figure 16: Deaths at ages 15-44 in all geographical areas.....	23
Long-Term Physical Health Conditions and Multimorbidity	24
Figure 17: Multimorbidity of physical long-term conditions by age group in 2019/20.	25
Figure 18: Percentage people with each physical LTC, split by age group.....	26
Table 6: Prevalence of the five most common physical LTCs as a percentage of the population across geographical areas (where 1 = most prevalent).....	26
Cancer Registrations	27
Figure 19: Cancer registration rate over time and by geographical area.	27
Figure 20: Cancer registration rates by geographical area.	27
Anxiety, Depression, and Psychosis Prescriptions.....	28
Figure 21: Percentage population prescribed ADP medication by geographical area.	28
Figure 22: ADP prescriptions over time and by geographical area.	28
Lifestyle and Risk Factors.....	29
Summary:.....	29
Drug-related Hospital Admissions	29
Figure 23: Trend of Drug-related Hospital Admission Rates by geographical area.....	30
Figure 24: Comparison of Drug-related Hospital Admission Rates for the period 2017/18 - 2019/20.....	30
Drug-Related Deaths.....	30
Figure 25: Trend of Drug-related Death Rates by geographical area.	31
Figure 26: Comparison of Drug-related Death Rates for the period 2020.....	31
Alcohol-related Hospital Admissions	32
Figure 27: Trend of Alcohol-related Hospital Admission Rates by geographical area.....	32
Figure 28: Comparison of Alcohol-related Hospital Admission Rates for 2020/21.....	32
Alcohol-Specific Deaths.....	33
Figure 29: Trend of Alcohol-Specific Death Rates by geographical area.....	33
Figure 30: Comparison of Alcohol-related Death Rates for the period 2015 - 2019 (5 year aggregate).....	33
Bowel Screening Uptake	34
Figure 31: Trend of Bowel Screening Uptake for eligible men and women, by geographical area.....	34
Figure 32: Comparison of Bowel Screening Uptake for 2017 - 2019.	35
Smoking Prevalence.....	35
Figure 33: Smoking Prevalence by geographical area, 2017.....	35
Hospital and Community Care	36
Emergency Admissions	37
Figure 34: Emergency admissions by age group.....	37
Figure 35: Emergency admissions by geographical area	37

Unscheduled Bed Days	38
Figure 36: Unscheduled bed days by age group.....	38
Figure 37: Unscheduled bed days by geographical area	38
A&E Attendances	39
Figure 38: A&E attendances by age group	39
Figure 39: A&E attendances by geographical area.....	39
Delayed Discharges	40
Figure 40: Delayed discharges by age group.....	40
Figure 41: Delayed discharges by geographical area	40
Emergency Admissions from a Fall	41
Figure 42: Falls by age group	41
Figure 43: Falls by geographical area.....	41
Emergency Readmissions (28 days).....	42
Figure 44: Emergency readmissions by age group.....	42
Figure 45: Emergency readmissions by geographical area	42
Potentially Preventable Admissions (PPAs)	43
Figure 46: PPAs by age group	43
Figure 47: PPAs by geographical area	43
% Last 6 months in a Community Setting.....	44
Figure 48: Last 6 months in a community setting by geographical area	44
Hospital Care for Mental Health Specialties.....	45
Emergency Admissions (MH)	46
Figure 49: MH Emergency admissions by age group	46
Figure 50: MH Emergency admissions by geographical area.....	46
Unscheduled Bed Days (MH)	47
Figure 51: MH Unscheduled bed days by age group	47
Figure 52: MH Unscheduled bed days by geographical area.....	47
Delayed Discharges (MH)	48
Figure 53: MH Delayed discharges by geographical area	48
Children and Young People	49
Maternity Breastfeeding.....	49
Figure 54: Percentage of babies exclusively breastfed at 6-8 weeks by geographical area. .	49
Figure 55: Percentage of babies exclusively breastfed at 6-8 week review by Locality (2019-2020).....	50
Maternal Smoking	50
Figure 56: Percentage of women smoking during pregnancy by geographical area	51
Teenage Pregnancies	51
Figure 57: Percentage of Teenage Pregnancies by geographical area	52

6 in 1 Immunisation	52
Figure 58: Percentage uptake of 6 in 1 Immunisation by geographical area.....	52
24 Months MMR Immunisation	53
Figure 59: Percentage uptake of 24 months MMR Immunisation by geographical area	53
Dental Caries.....	53
Figure 60: Percentage of Primary 1 children with no obvious dental caries by geographical area.....	54
Healthy Weight	54
Figure 61: Percentage of Primary 1 children with healthy weight by geographical area	55
Protection Register	55
Figure 62: Children on the child protection register.....	55
Looked after by Local Authority	56
Figure 63: Children looked after by Local Authority	56
Crime and Fires	57
Figure 64: Crime Rate per 1,000 population (excludes miscellaneous offences and motor vehicle offences), 2020/21	57
Figure 65: Non-accidental fires per 100,000 population, 2020/21	57
Footnotes	58
Appendices	59
Appendix 1: Indicator Definitions	59
Appendix 2: Conditions included as Potentially Preventable Admissions (PPAs)	62

Summary Table

Indicators	Data Type	Time Period	South Ayrshire	North Ayrshire	East Ayrshire	South Ayrshire	NHS Ayrshire & Arran	Scotland
Demographics								
Total Populations	count	2020	112,140	134,250	121,600	112,140	367,900	5,466,000
Gender ratio male to female	ratio	2020	1:1.09	1:1.1	1:1.06	1:1.09	1:1.09	1:1.05
Population over 65	%	2020	26	23	21	26	23	19
Dependency Ratio	%	2020	71	65	61	71	65	56
Population in least deprived SIMD quintile	%	2020	20	10	11	20	30	20
Population in most deprived SIMD quintile	%	2020	17	42	31	17	13	20
Housing								
Total number of households	count	2020	55,790	68,826	58,814	55,790	183,430	2,653,521
Households with a single occupant tax discount	%	2020	36	40	39	36	38	38
Households in council tax A-C	%	2020	52	70	69	52	64	59
Households in council tax F-H	%	2020	16	7.8	7.8	16	10.2	13
General Health								
Male average life expectancy in years	mean	2018-2020*	76.7	75.3	75.2	76.7	80.3	76.8
Female average life expectancy in years	mean	2018-2020*	81.1	80.1	79.8	81.1	75.7	81
Average Healthy life expectancy at birth - males	mean	2017-2019	60	58.5	59.3	60	59.4	61.6
Average Healthy life expectancy at birth - females	mean	2017-2019	63.3	56.3	58.2	63.3	59.1	61.9
Early mortality rate per 100,000	rate	2018-2020	149	164	159	149	157	116
Population with long term condition	%	2019/20	27	27	26	27		19
Cancer registrations per 100,000	rate	2017-2019	607	654	608	607	624	644
Anxiety, depression & psychosis prescriptions per 100,000	%	2019/20	22	22	21	22	22	20

PHS LIST HSCP Profiles

Indicators	Data Type	Time Period	South Ayrshire	North Ayrshire	East Ayrshire	NHS Ayrshire & Arran	Scotland
Lifestyle & Risk Factors							
Drug-related hospital admissions per 100,000	rate	2017/18-2019/20	335	424	374	380	221
Drug-related deaths per 100,000	Rate	2020	32	35	32	33	25
Alcohol-related hospital admissions per 100,000	rate	2020/21	718	631	561	633	621
Alcohol specific mortality per 100,000	rate	2015-2019	15	25	18	20	20
Bowel Screening Uptake	%	2017-2019	64	59	60	61	61
Hospital and Community Care							
Emergency admissions per 100,000	rate	2020/21	12,833	12,012	11,808	12,195	9,368
Unscheduled acute bed days per 100,000	rate	2020/21	92,950	84,702	73,683	83,574	61,622
A&E attendances per 100,000	rate	2020/21	21,612	22,104	22,988	22,246	20,422
Delayed discharge bed days per 100,000	rate	2020/21	17,797	7,696	3,897	9,568	8,080
Falls emergency admissions per 100,000	rate	2020/21	801	691	655	713	658
Emergency readmissions per 1,000	rate	2020/21	123	117	126	122	115
Last 6 months of life spent in community setting	%	2020/21	89	89	91	90	90
Potentially Preventable Admissions per 100,000	rate	2020/21	1,788	1,577	1,616	1,654	1,181
Hospital Care							
(Mental Health Specialty)							
Emergency Admissions per 100,000	rate	2020/21	188	182	173	181	254
Unscheduled bed days per 100,000	rate	2020/21	14,930	22,736	15,518	17,972	18,507
Delayed Discharges per 100,000	rate	2019/20	4,069	2,349	733	2,349	1,910

PHS LIST HSCP Profiles

Indicators	Data Type	Time Period	South Ayrshire	North Ayrshire	East Ayrshire	NHS Ayrshire & Arran	Scotland
Children and Young People							
Babies exclusively breastfed at 6-8 week review	%	2017/18-2019/20	22	18	18	19	31
Mothers smoking during pregnancy	%	2017/18-2019/20	17	21	18	19	15
Teenage Pregnancies	%	2017-2019	28	36	34	33	29
6 in 1 Immunisation Uptake	%	2018-2020	98	97	98	98	97
24 Months MMR Immunisation Uptake	%	2018-2020	96	94	96	95	94
Primary 1 Children with no obvious Dental caries	%	2019/20	78	72	60	70	72
Primary 1 Children with Healthy Weight	%	2019/20	81	73	73	77	76
Children on the protection register per 1,000	rate	2020	1.7	6.1	3.7	-	-
Children looked after by local authority per 1000	Rate	2020	15	23	16	-	-
Crime and Fires							
Crime rate per 1,000	rate	2020/21	41	49.7	45	-	45
Non-accidental fires per 100,000	rate	2020/21	240	359	487	365	265

Notes for this profile:

- All years shown are calendar years unless otherwise specified.
- Upper and lower confidence intervals are shown throughout this document where available. In charts, these are displayed as shaded areas either side of trend lines, or as black error bars in bar charts. Confidence intervals show the range of possible values and a certainty that the true value falls within them.
- Definitions for the indicators shown are available in Appendix 1.

Demographics

Summary:

For the most recent time periods available, South Ayrshire HSCP had:

- A total population of **112,140** people (**52%** female, **48%** male), and **26%** were aged over 65.
- A dependency ratio of 70%.
- **20%** of people lived in the least deprived SIMD quintile, and **17%** lived in the most deprived quintile.

Population

In 2020, the total population of South Ayrshire was 112,140. The graph below shows the population distribution of the partnership.

Figure 1: Population breakdown in South Ayrshire HSCP.

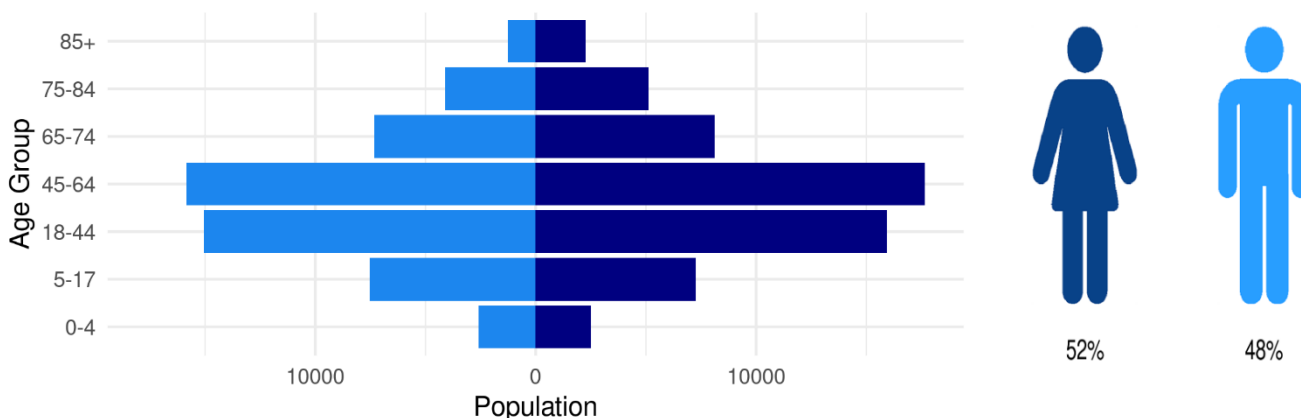
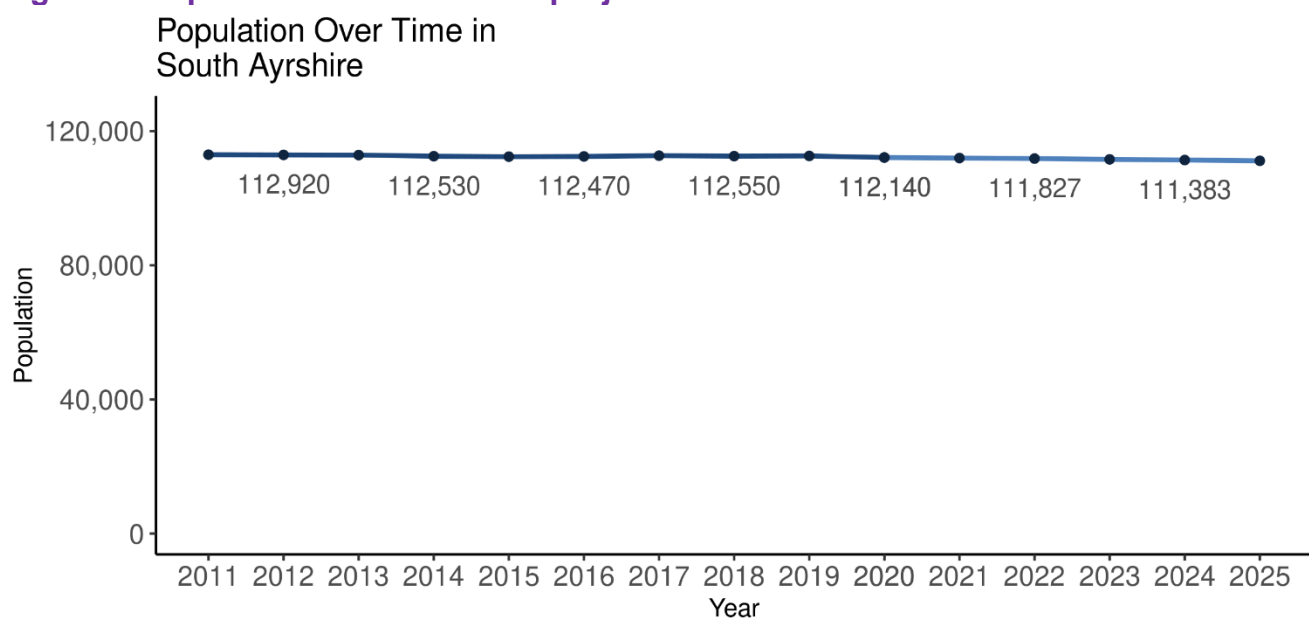


Figure 2 shows the historical population of South Ayrshire HSCP, along with the NRS population projections. The population has been falling. The population in South Ayrshire is estimated to decrease by 0.9% from 2020 to 2025. *Please see the footnotes for more information on how the population projections were calculated¹.*

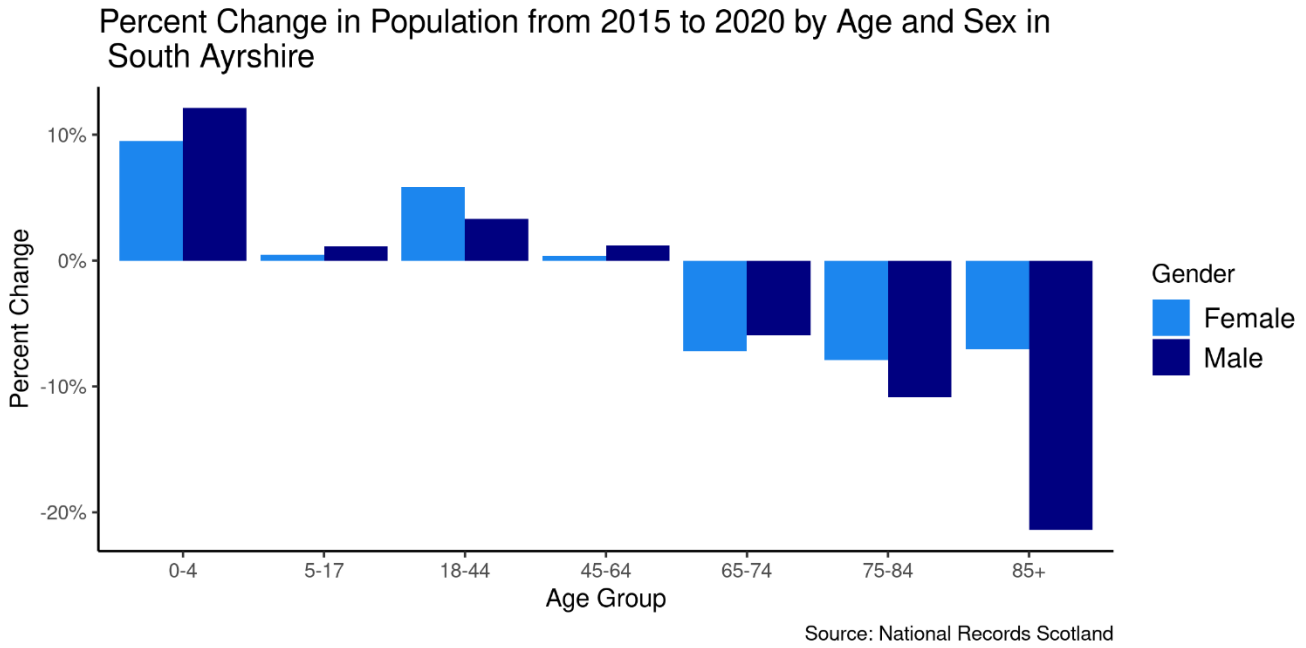
Figure 2: Population time trend and projection.



Source: National Records Scotland

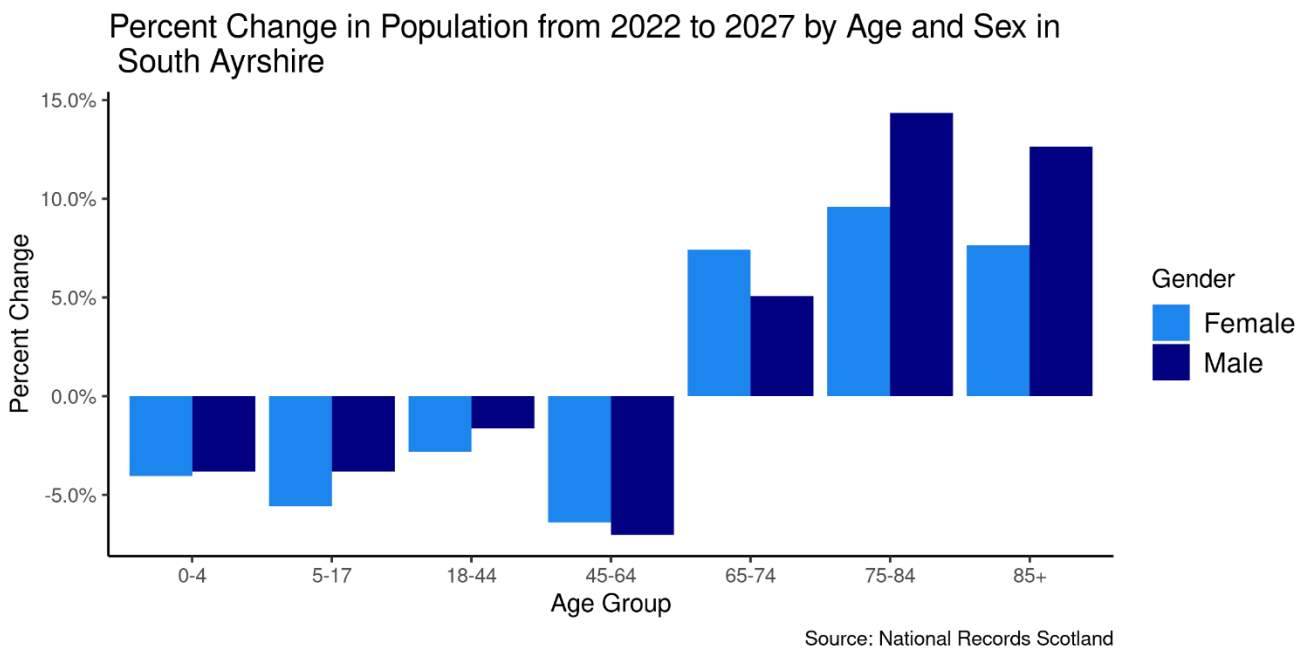
Figure 3 shows how population structure has changed between 2015 and 2020.

Figure 3: Change in population structure over the last five years.



Error! Reference source not found. shows how the population structure is expected to change in the future between 2022 and 2027. This shows that although the overall population is projected to decrease (**Error! Reference source not found.**), the older population of South Ayrshire is expected to increase, while the population aged under 65 is expected to decrease.

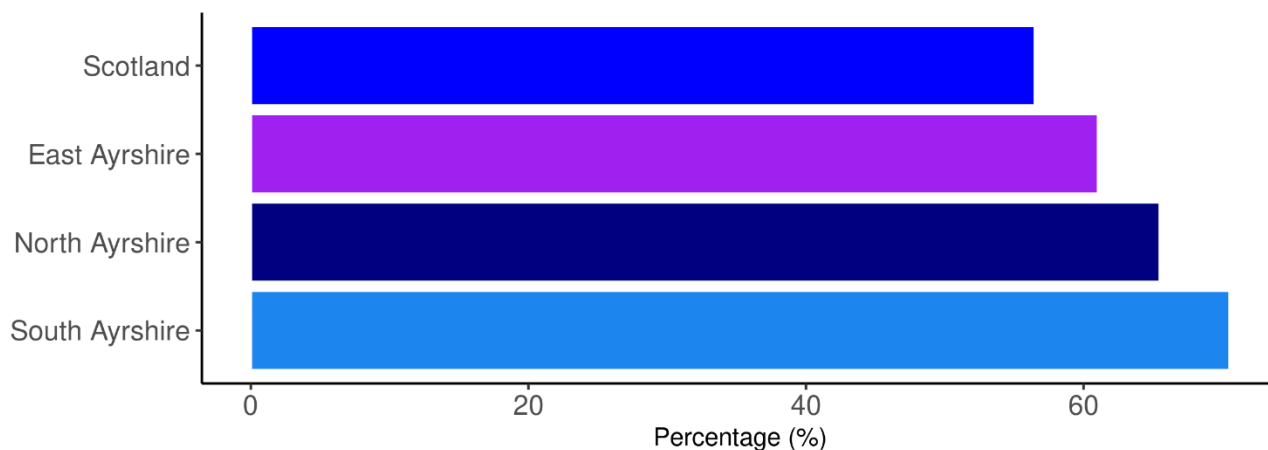
Figure 4: Projected change in population structure between 2022 and 2027.



Dependency Ratio

The dependency ratio is the number of people aged 0-15 and 65+ as a percentage of those aged 16-65. For South Ayrshire HSCP, the figure was 70% for the most recent year.

Figure 5: Dependency ratio by geographical area, 2020



Source: NRS

Deprivation

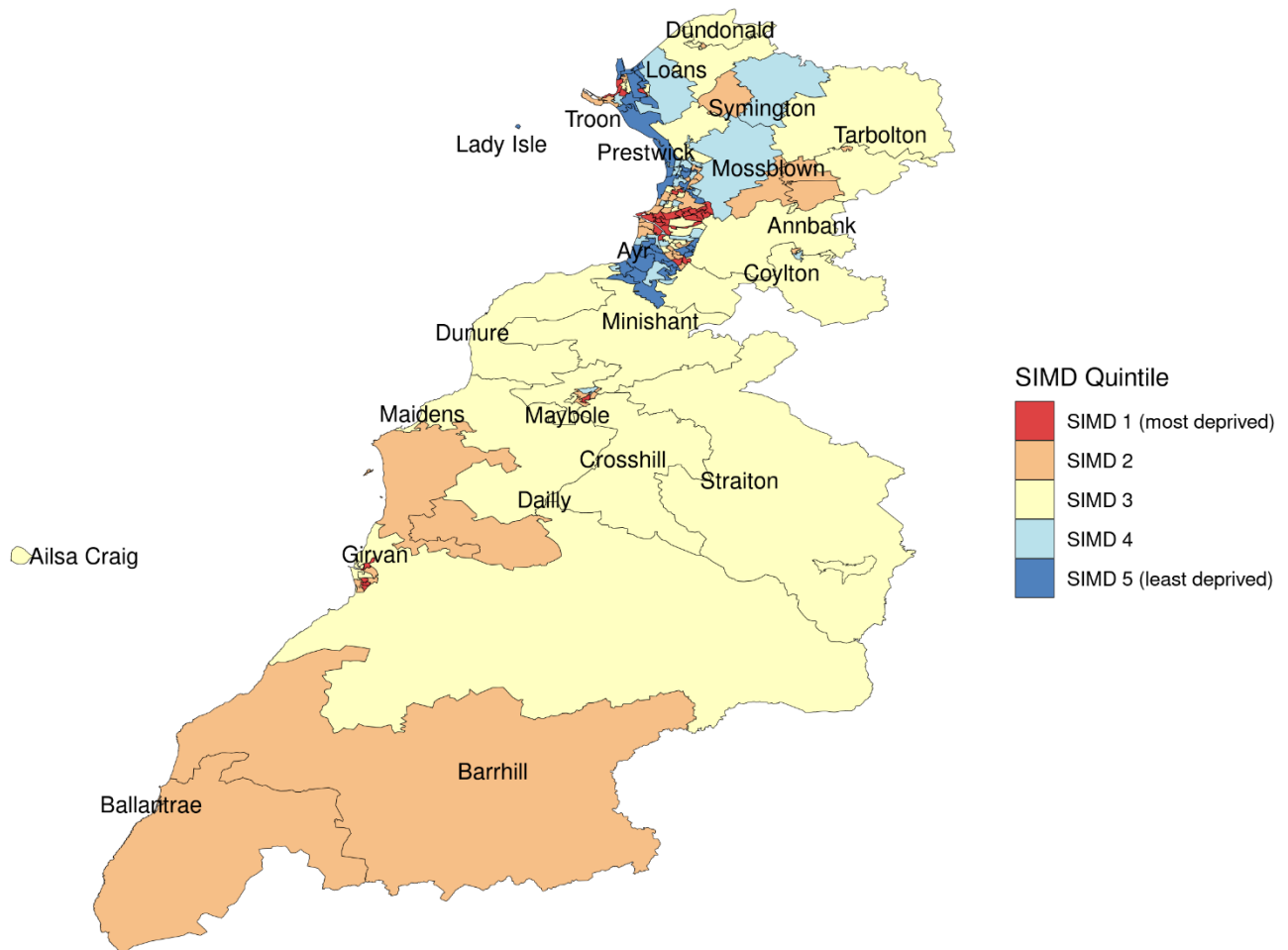
The following section explores the deprivation structure of South Ayrshire HSCP through the Scottish Index of Multiple Deprivation (SIMD). The SIMD ranks all datazones in Scotland by a number of factors; Access, Crime, Education, Employment, Health, Housing and Income. Based on these ranks, each datazone is then given an overall deprivation rank, which is used to split datazones into Deprivation Quintiles (Quintile 1 being the most deprived, and Quintile 5 the least). The most recent SIMD ranking was carried out in 2020. This section mainly focuses on the SIMD 2020 classifications, however the 2016 classifications are used to assess how deprivation has changed in South Ayrshire when compared to the rest of Scotland.

Of the 2020 population in South Ayrshire, **17%** live in the most deprived SIMD Quintile, and **20%** live in the least deprived SIMD Quintile. The following table details the percent of the population living in the 2016 SIMD Quintiles, the percent living in the 2020 SIMD Quintiles, and their difference for comparison.

Table 1: Percentage population living in the 2016 and 2020 SIMD Datazone Quintiles

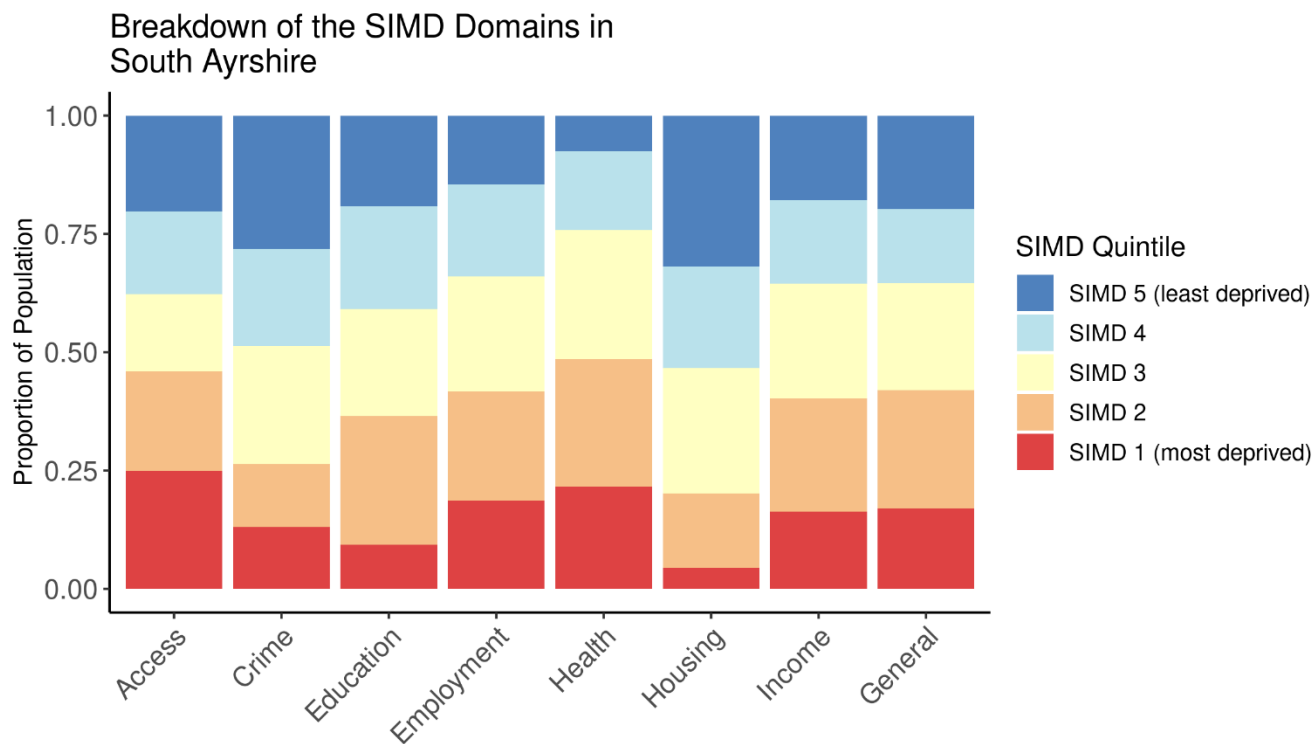
Quintile	Percent of Pop (2016)	Percent of Pop (2020)	Difference
SIMD 1	17.5%	17.0%	-0.4%
SIMD 2	27.1%	24.9%	-2.2%
SIMD 3	21.3%	22.7%	1.4%
SIMD 4	13.6%	15.6%	2.0%
SIMD 5	20.5%	19.8%	-0.7%

Figure 6: Map of Data Zones within South Ayrshire coloured by SIMD quintiles.



Source: Scottish Government, Public Health Scotland

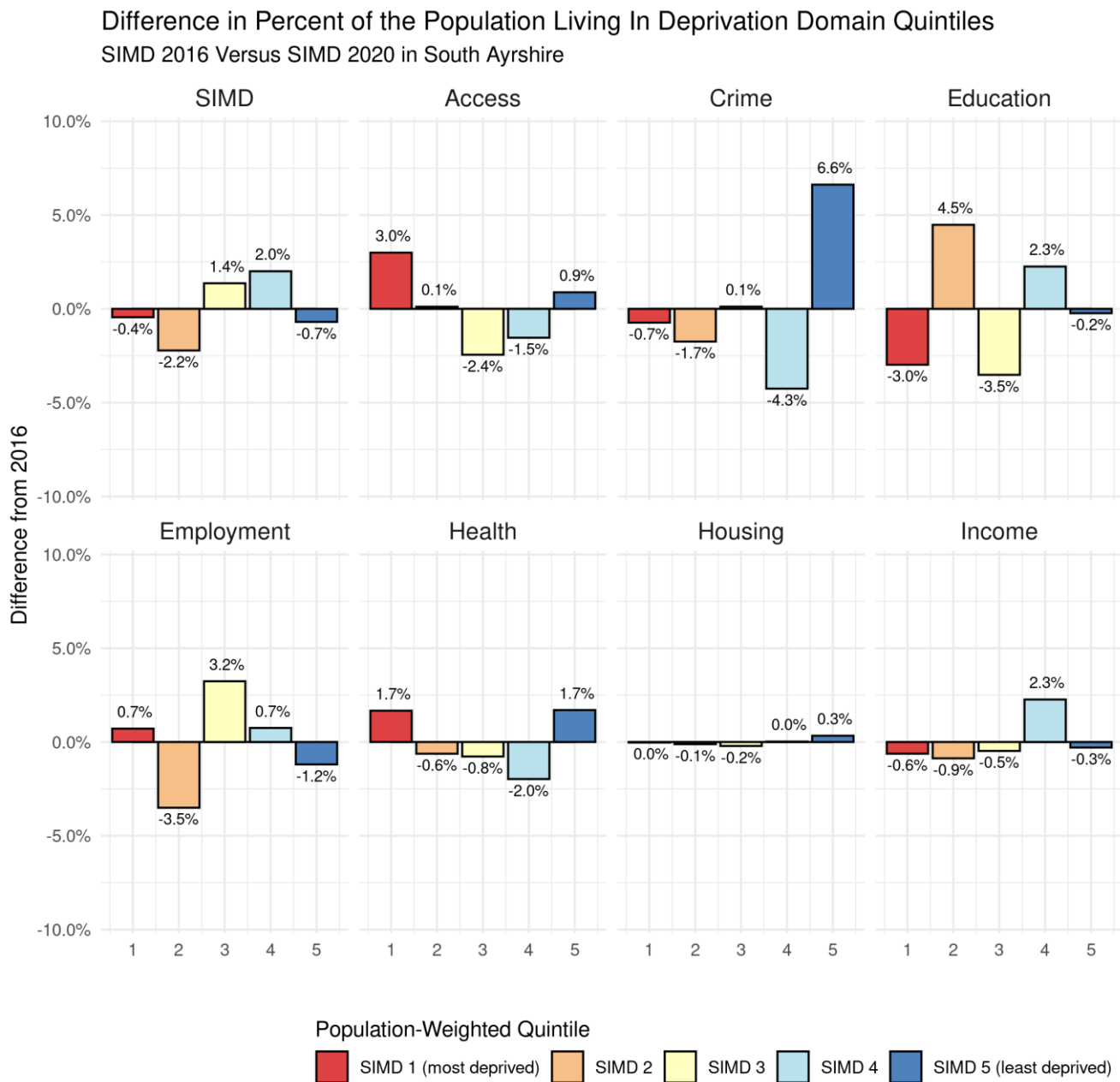
Figure 7: Proportion of the population that reside in each 2020 SIMD quintile by domain.



Source: Scottish Government, Public Health Scotland, National Records Scotland

Figure 8 presents a comparison between the 2016 Scottish Index of Multiple Deprivation figures, and the new 2020 SIMD figures. The percentages of the population living within each SIMD quintile and domain quintile were calculated first using the 2016 SIMD datazone classifications, and then the 2020 SIMD classifications. The differences in these percentages are plotted in Figure . Negative values on the y axis indicate a decrease in percent of the population living within a quintile, while positive values indicate an increase in percent of the population living within a quintile. **Please note that quintiles have been weighted by the Scottish population so, any local changes in SIMD quintile do not necessarily indicate a difference in deprivation, but rather a difference in deprivation in comparison to the rest of Scotland.**

Figure 8: Percentage population living in the 2016 and the 2020 SIMD and Domain Quintiles



Source: Scottish Government, National Records Scotland

Households

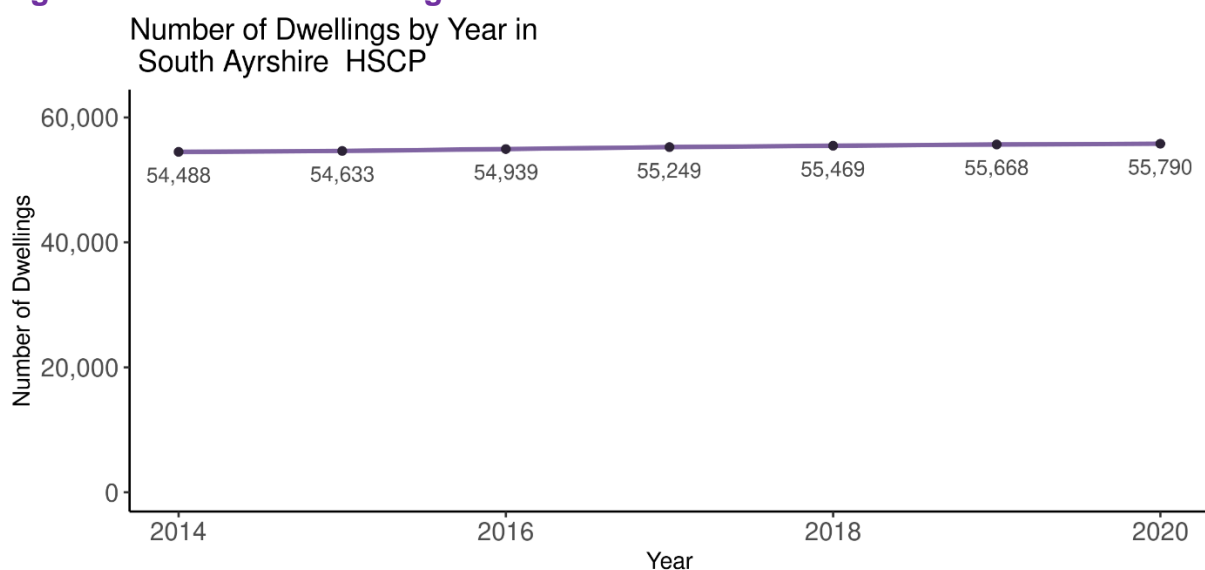
Summary:

For the most recent time periods available, South Ayrshire HSCP had:

- **55,790** dwellings, of which: **96%** were occupied and **0.88%** were second homes.
- **36%** of dwellers received a single occupant council tax discount, and **1.2%** were exempt from council tax entirely.
- **52%** of houses were within council tax bands A to C, and **16%** were in bands F to H.

The graph below shows the number of dwellings in South Ayrshire HSCP from 2014 to 2020.

Figure 9: Number of dwellings time trend.



Source: National Records Scotland

Of the total number of dwellings in 2020, 35% (19,897 households) were occupied by an individual receiving a single occupant council tax discount. Furthermore, 1.2% (664 households) were occupied and exempt from council tax.

There were 490 dwellings classed as a second home in 2020, these dwellings made up 0.88% of the households in South Ayrshire.

Table 2: Breakdown of dwelling types by year for South Ayrshire HSCP.

Year	Total Dwellings	Occupied Dwellings	Vacant Dwellings	Single Occupant Tax Discount	Council Tax Exempt Dwellings	Second Homes
2014	54,488	52,841	1,187	19,714	649	460
2015	54,633	52,828	1,338	19,535	658	467
2016	54,939	52,846	1,615	19,794	633	478
2017	55,249	53,072	1,699	20,204	625	478
2018	55,469	53,229	1,727	20,561	627	513
2019	55,668	53,590	1,605	18,999	681	473
2020	55,790	53,479	1,821	19,897	664	490

The proportion of households within each council tax band are displayed in the chart below, figures are shown in Table 3.

Figure 10: Breakdown of households by council tax band for South Ayrshire HSCP in 2020.

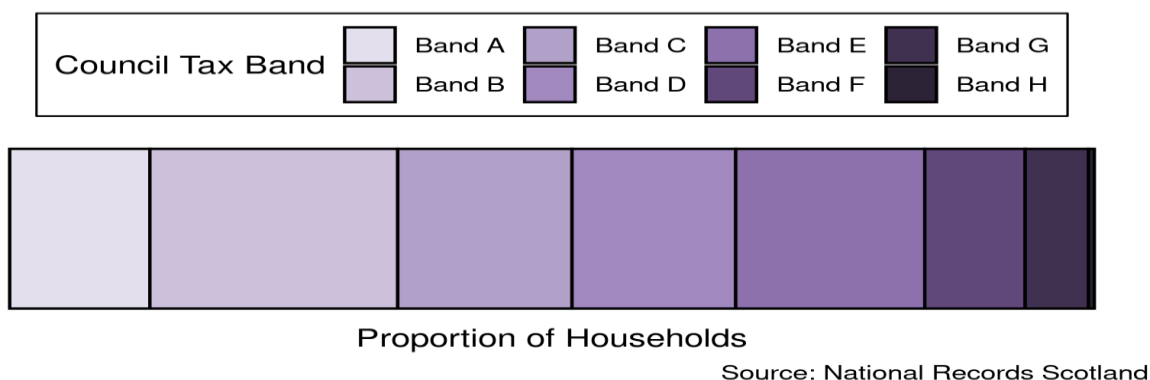
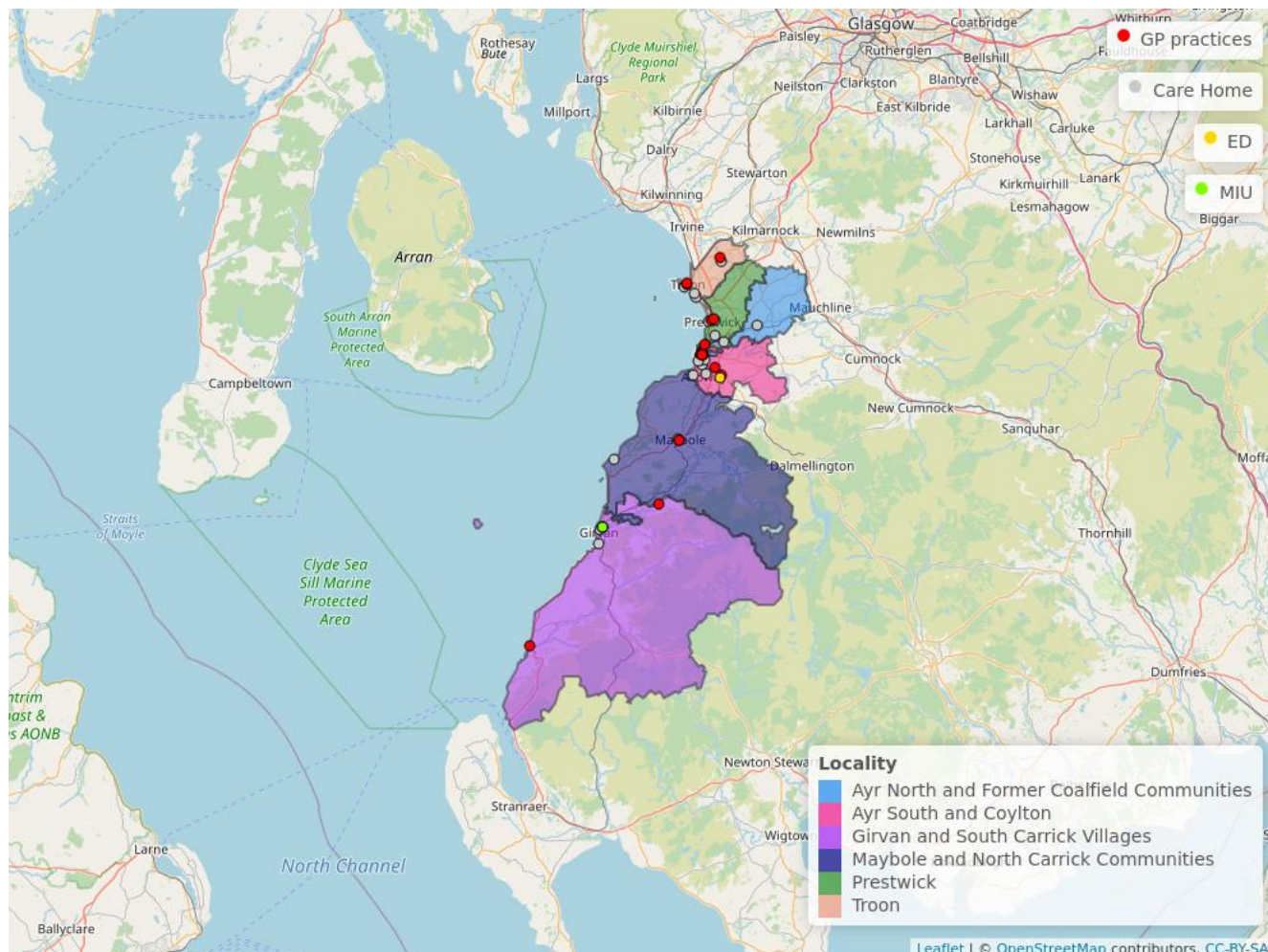


Table 3: Percentage of households by council tax band for South Ayrshire in 2020.

Tax Band	A	B	C	D	E	F	G	H
Percent of households	13%	23%	16%	15%	17%	9.3%	5.9%	0.54%

Services

Figure 11: Map of GP practices by locality in South Ayrshire HSCP².



ED = Emergency Department, MIU = Minor Injuries Unit (or other)

Table 4: Number of each type of service in South Ayrshire HSCP².

Service Type	Service	Number
Primary Care	GP Practice	20
	Care Home	24
A&E	Emergency Department	1
	Minor Injuries Unit	1
Care Home	Elderly Care	24
	Other	13

General Health

Summary:

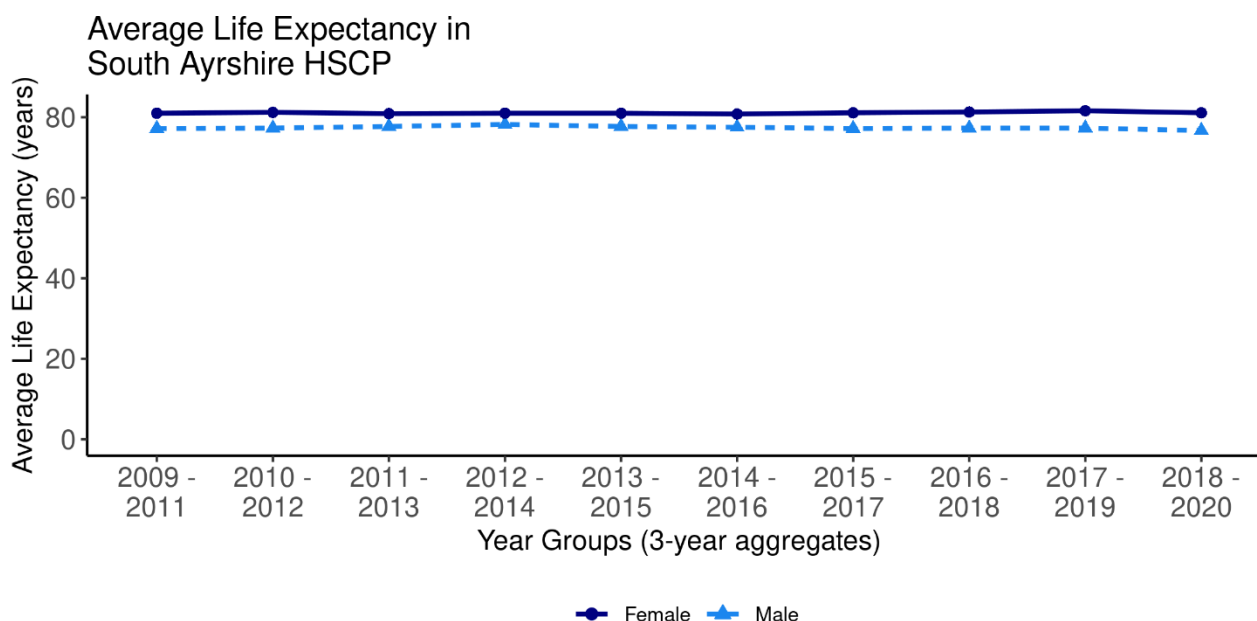
For the most recent time periods available³, South Ayrshire HSCP had:

- An average life expectancy of **76.7** years for males and **81.1** years for females.
- An average healthy life expectancy at birth of **60** for males and **63.3** for females
- A death rate for ages 15 to 44 of **149** deaths per 100,000 age-sex standardised population⁴.
- **27%** of the partnership's population with at least one long-term physical health condition.
- A cancer registration rate of **607** registrations per 100,000 age-sex standardised population⁴
- **22%** of the population being prescribed medication for anxiety, depression, or psychosis.

Life Expectancy

In the latest time period available from 2018-2020 (3-year aggregate), the average life expectancy in South Ayrshire was **76.7** years old for men, and **81.1** years old for women. A time trend from 2009-2011 is shown below in Figure 12.

Figure 12: Average life expectancy in men and women over time.



Source: ScotPHO

Table 5 shows the average life expectancy for men and women in different areas for the latest time period available. Please note that these are 3 year aggregates from 2018-2020 at partnership, Health Board, and Scotland level.

Table 5: Average life expectancy in years for the latest time periods (2016-2018 aggregated years for all areas).



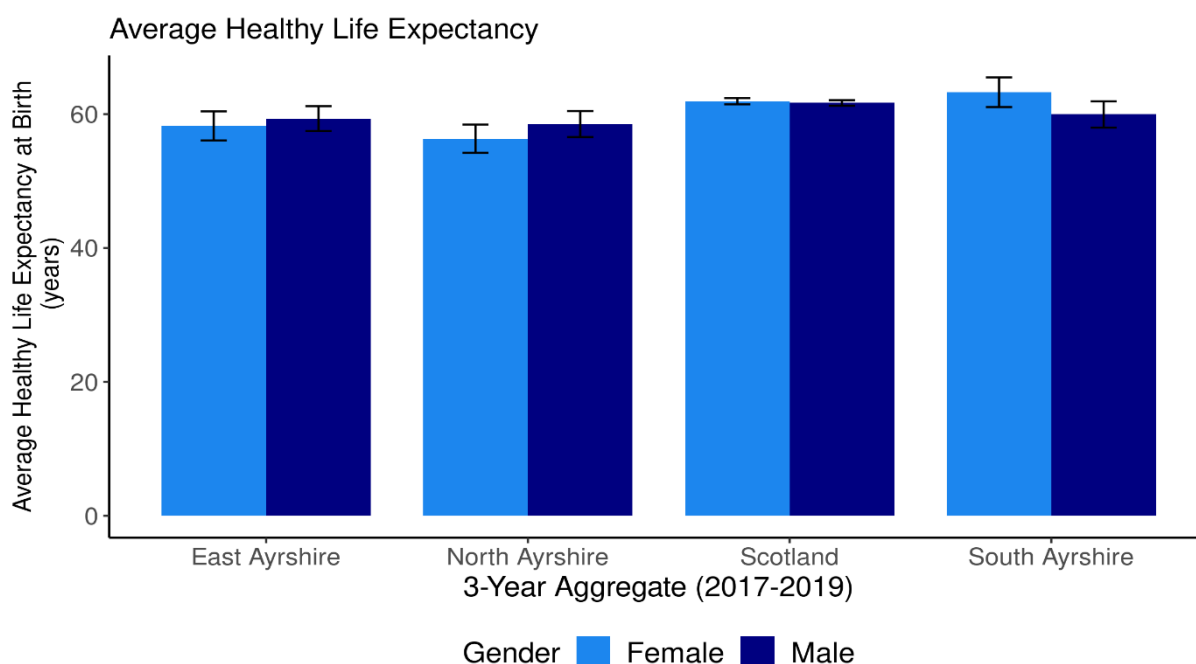
	Partnership	Health Board	Scotland
Women	81.1	80.3	81
Men	76.7	75.7	76.8

Where Partnership = South Ayrshire HSCP, Health Board = NHS Ayrshire & Arran.

Healthy Life Expectancy

In the latest time period available from 2017-2019 (3-year aggregate), the average healthy life expectancy in South Ayrshire was 60 years old for men, and 63.3 years old for women. Figure 13 shows the average healthy life expectancy for South Ayrshire in comparison to East Ayrshire, North Ayrshire and Scotland over a 3-year period.

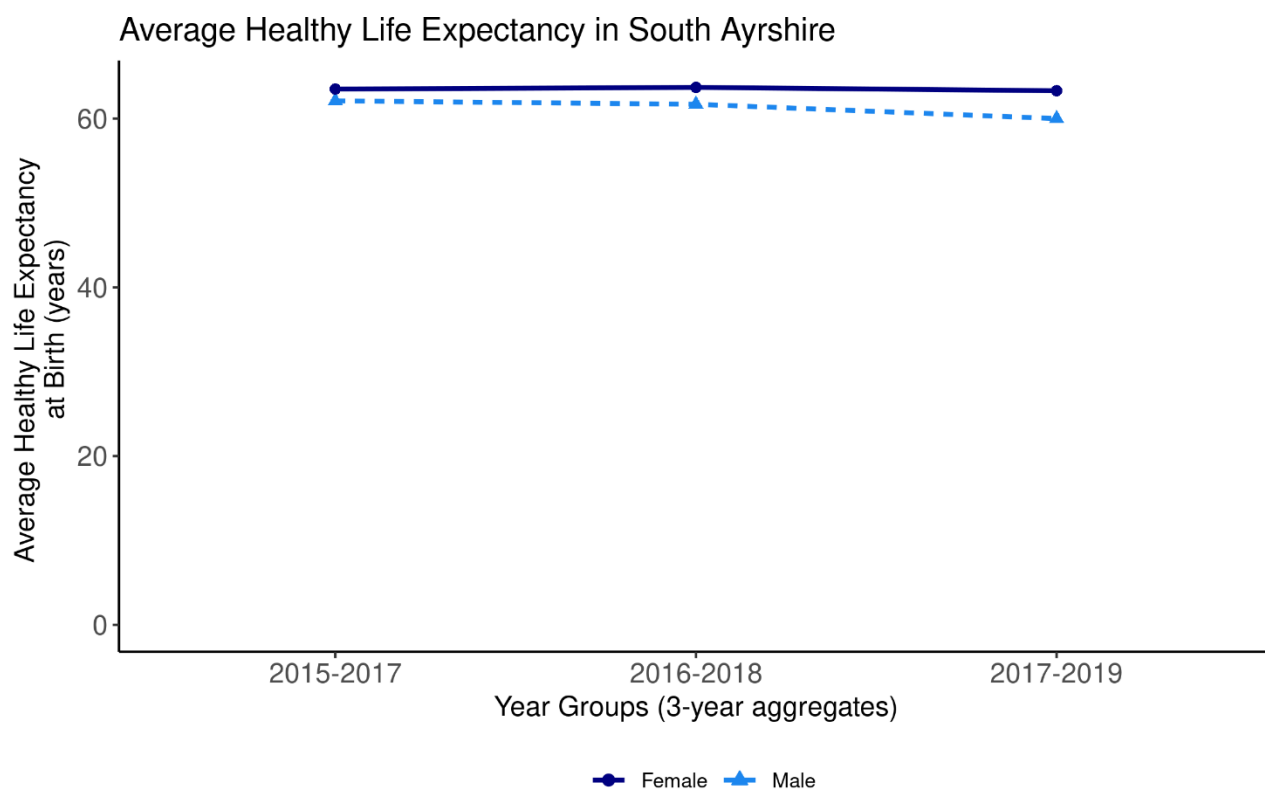
Figure 13: Average Healthy Life Expectancy at birth



Source: National Records Scotland

The following chart shows a trend of the average healthy life expectancy at birth for men in women in South Ayrshire from 2015-2017 to 2017- 2019 (3-year aggregate). From 2015-2017 to the latest time period available (2017-2019), the average healthy life expectancy at birth in South Ayrshire decreased by 2.2 years for men, and decreased by 0.3 years for women.

Figure 14: Average Healthy Life expectancy in men and women over time

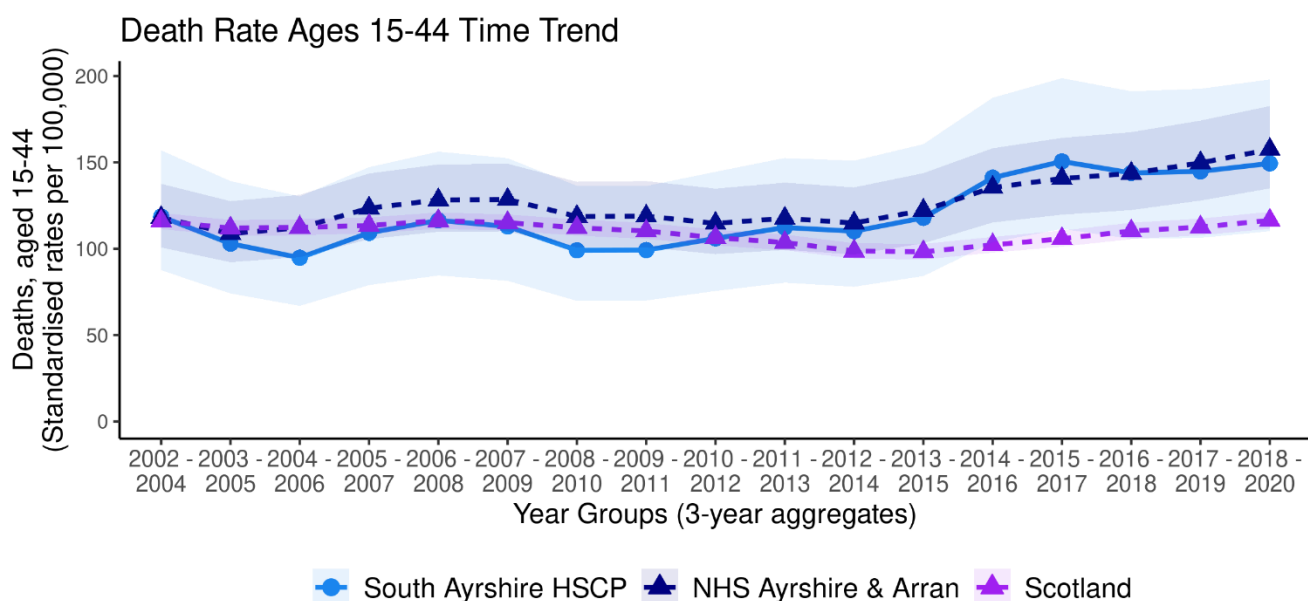


Source: National Records Scotland

Deaths, aged 15-44

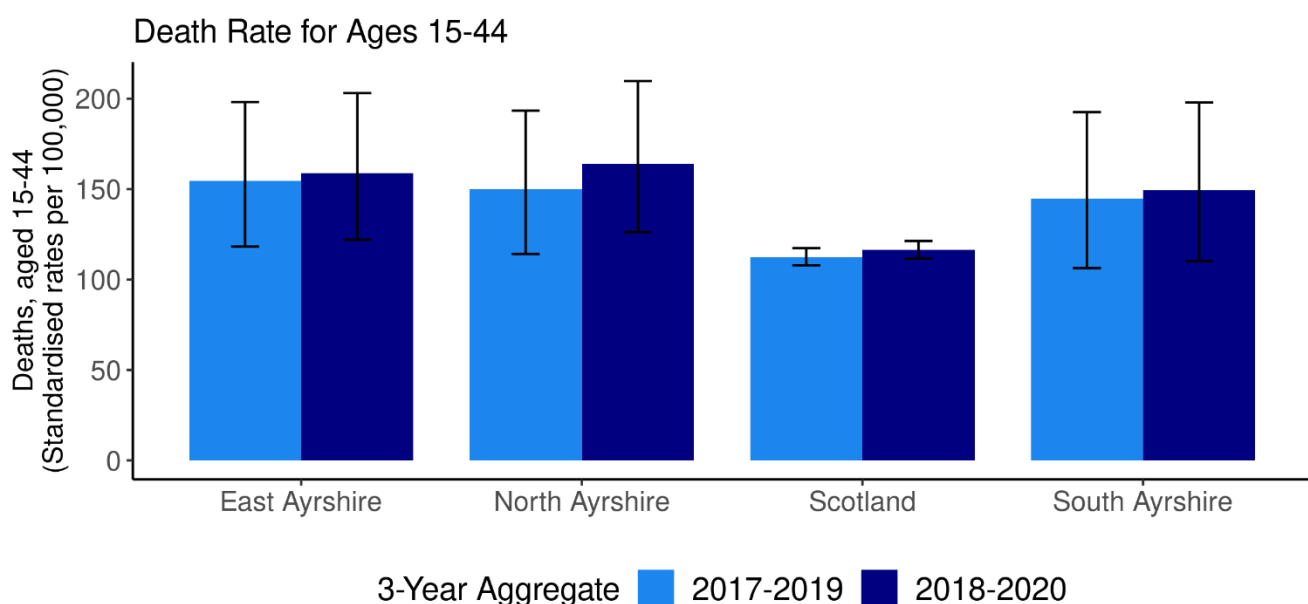
The following chart shows a trend of death rates among 15-44 year olds per 100,000 age-sex standardised population⁴ by area (i.e. Early mortality rate per 100,000). In the most recent aggregate time period available (from 2018-2020), the mortality rate in South Ayrshire was **149** deaths per 100,000 population. Figure 16 shows deaths for South Ayrshire compared with Scotland, East Ayrshire and North Ayrshire HSCP, for the two latest time aggregates available.

Figure 15: Deaths aged 15-44 years by geographical area and over time.



Source: ScotPHO

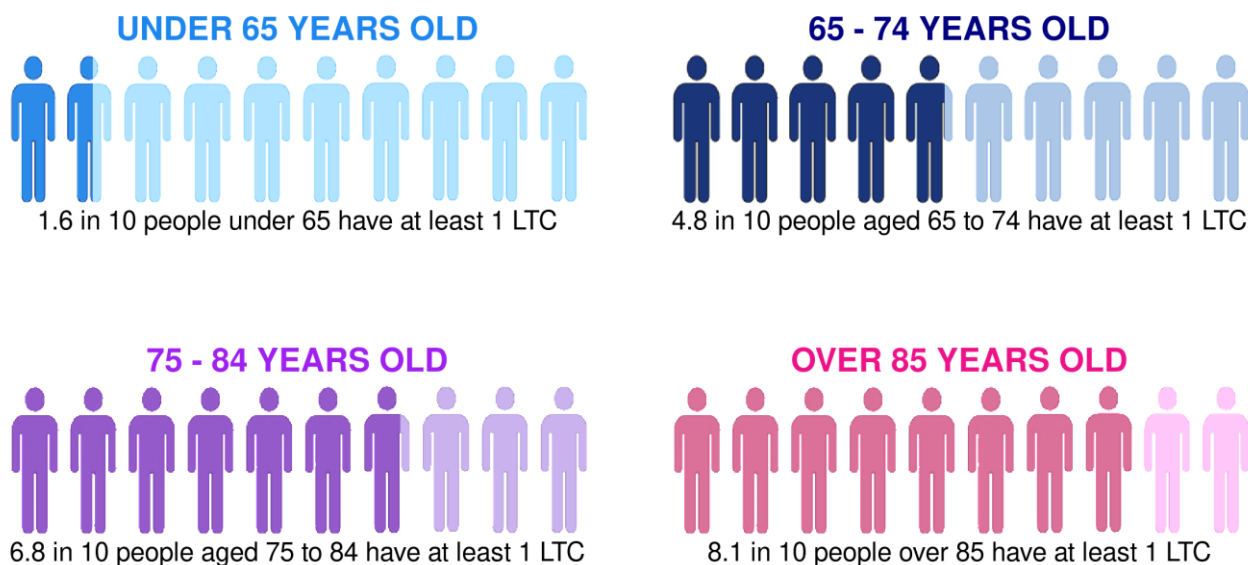
Figure 16: Deaths at ages 15-44 in all geographical areas.



Source: ScotPHO

Long-Term Physical Health Conditions and Multimorbidity

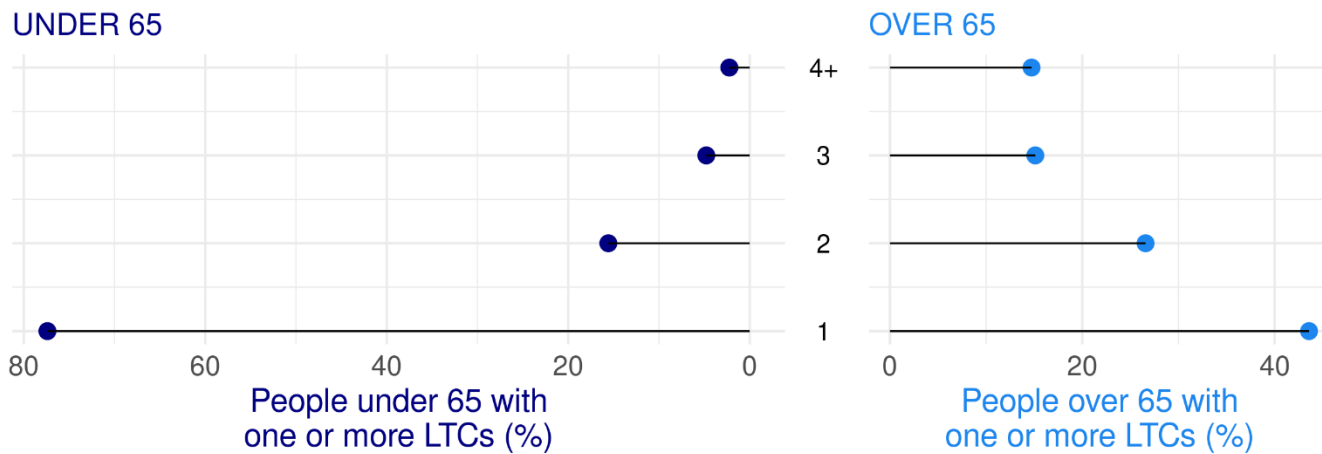
In the financial year 2019/20, in South Ayrshire HSCP, **27%** of the total population had at least one physical long-term condition (LTC). These include: cardiovascular, neurodegenerative, and respiratory conditions, as well as other organ conditions (namely liver disease and renal failure), arthritis, cancer, diabetes, and epilepsy. *Please see footnotes for information and caveats on identifying LTCs.*⁵



The co-occurrence of two or more conditions, known as multimorbidity, is broken down in Figure 17, distinguishing between age groups. Note that this chart *excludes* the population in the partnership who do not have any physical long-term conditions. Figure 17 therefore shows that among the people who have a LTC, **23%** of those under the age of 65 have more than one, compared to **56%** of those aged over 65.

Figure 17: Multimorbidity of physical long-term conditions by age group in 2019/20.

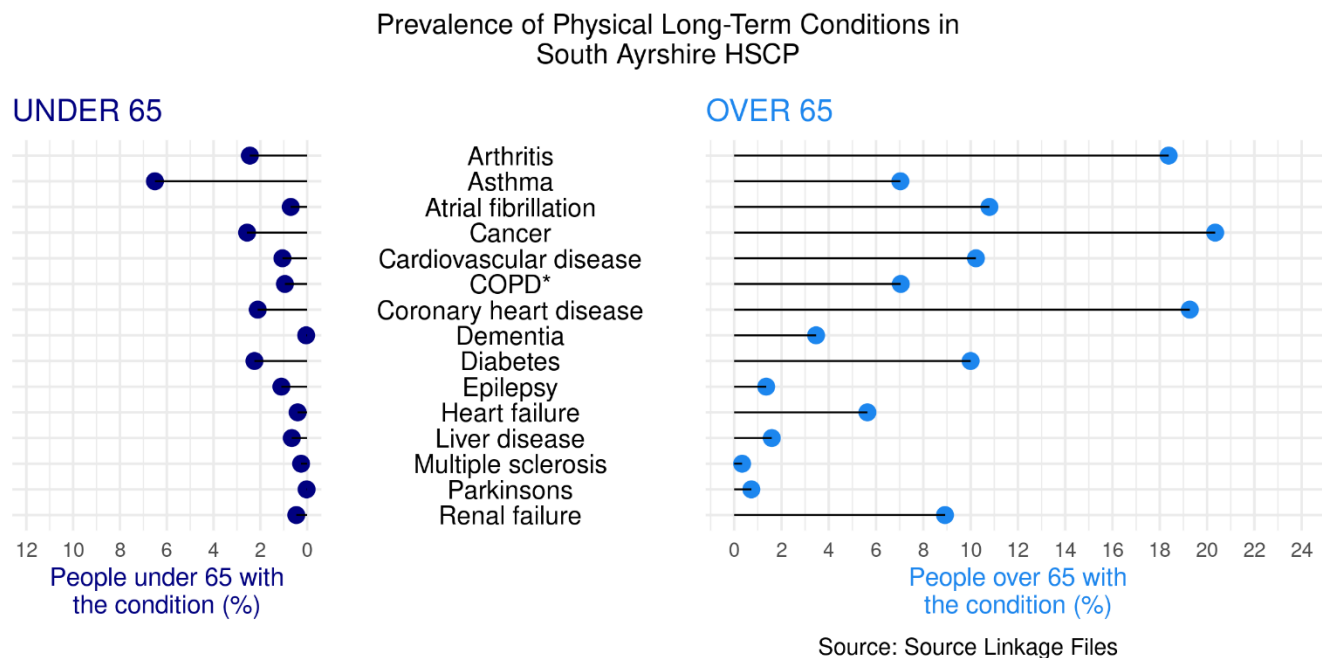
Multimorbidity – Percentage people with 1, 2, 3 or 4+ LTCs among those with a LTC in South Ayrshire HSCP



Source: Source Linkage Files

Below is a breakdown of the physical LTCs for the financial year 2019/20. Figure 18 shows the prevalence of different LTCs in each age group in South Ayrshire, and Table 6 illustrates the top 5 physical LTCs across all ages at partnership, and Scotland level.

Figure 18: Percentage people with each physical LTC, split by age group.



*COPD: Chronic Obstructive Pulmonary Disease

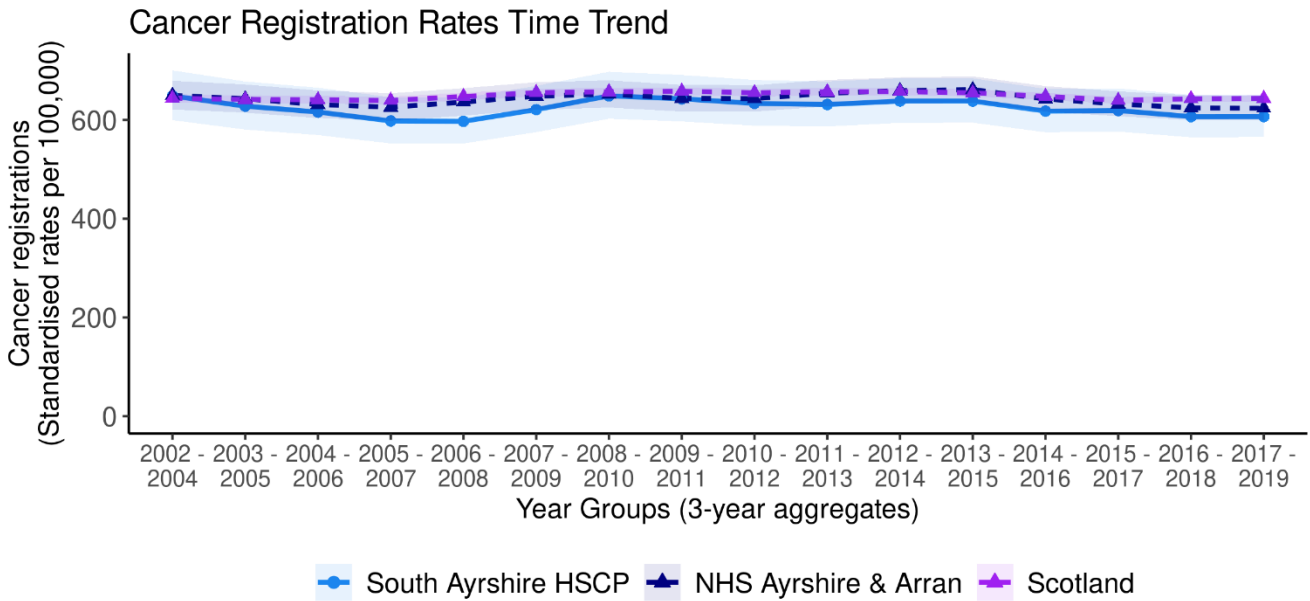
Table 6: Prevalence of the five most common physical LTCs as a percentage of the population across geographical areas (where 1 = most prevalent).

Top 5 Physical Long-Term Conditions		
	South Ayrshire HSCP	Scotland
1	Cancer 7.2%	Arthritis 5.6%
2	Asthma 6.6%	Cancer 5.1%
3	Arthritis 6.6%	Coronary heart disease 4.7%
4	Coronary heart disease 6.6%	Asthma 4.7%
5	Diabetes 4.3%	Diabetes 3.2%

Cancer Registrations

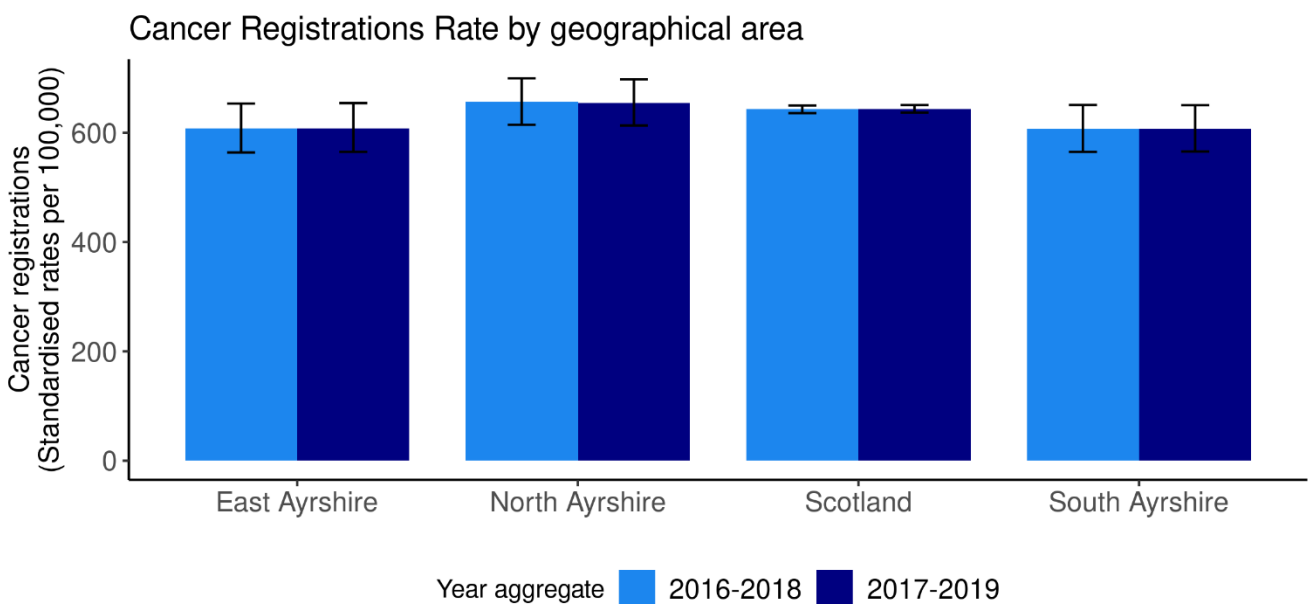
For the period 2017-2019, there were 827 new cancer registrations per year on average (607 registrations per 100,000 age-sex standardised population) in South Ayrshire. This is a 16.2% increase in cancer registrations rate from the aggregate period 2006-2008. Figure 19 shows changes over time since 2002-2004, and Figure 20 compares the rates in South Ayrshire HSCP with East Ayrshire, North Ayrshire and Scotland for the two latest available time periods.

Figure 19: Cancer registration rate over time and by geographical area.



Source: ScotPHO

Figure 20: Cancer registration rates by geographical area.



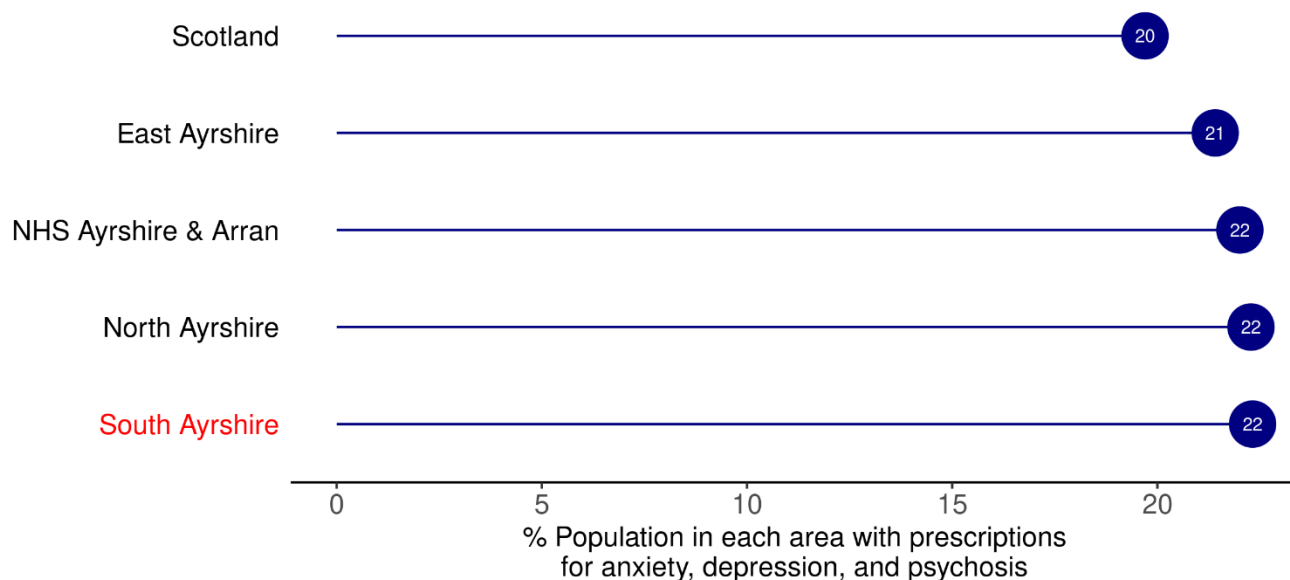
Source: ScotPHO

Anxiety, Depression, and Psychosis Prescriptions



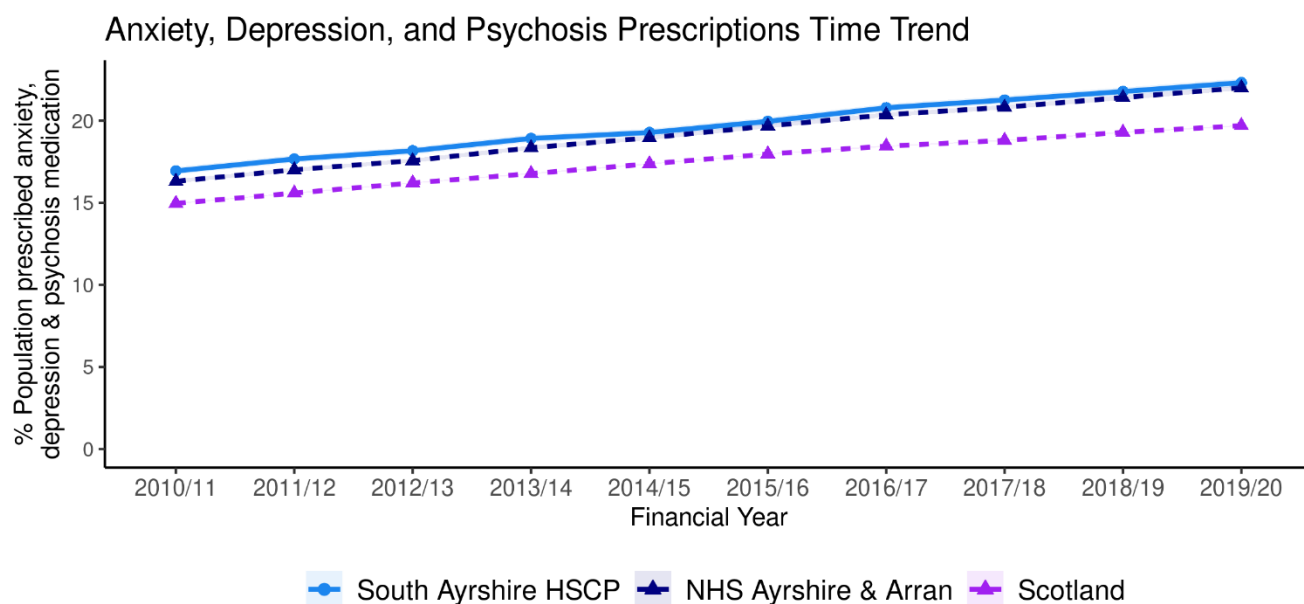
In the 2019/20 financial year, 22% of people were prescribed medication for anxiety, depression, or psychosis (ADP) in South Ayrshire.

Figure 21: Percentage population prescribed ADP medication by geographical area.



Source: ScotPHO

Figure 22: ADP prescriptions over time and by geographical area.



Source: ScotPHO

Lifestyle and Risk Factors

Summary:

Mental and physical wellbeing has close ties with people's lifestyles and behaviours. Financial security, employment and location are influences that often have a bearing on these choices. Issues can develop when alcohol, smoking or drug use shape lives. This section provides data on drug-related hospital admissions, alcohol-related hospital admissions, alcohol-specific mortality and bowel screening uptake, to give an overview of some of the lifestyles and behaviours for South Ayrshire HSCP. These can give an idea of quality of life and prosperity.

For the most recent time periods available³, South Ayrshire HSCP had:

- **335** drug-related hospital admissions per 100,000 age-sex standardised population⁴. This is a higher rate of admissions than for Scotland (221).
- **32** drug-related deaths per 100,000 age-sex standardised population
- **739** alcohol-related hospital admissions per 100,000 age-sex standardised population⁴.
- **15** alcohol-specific mortalities per 100,000 age-sex standardised population⁴.
- a **63%** uptake of bowel cancer screening for the eligible population.
- a smoking prevalence of **15%**.

Drug-related Hospital Admissions

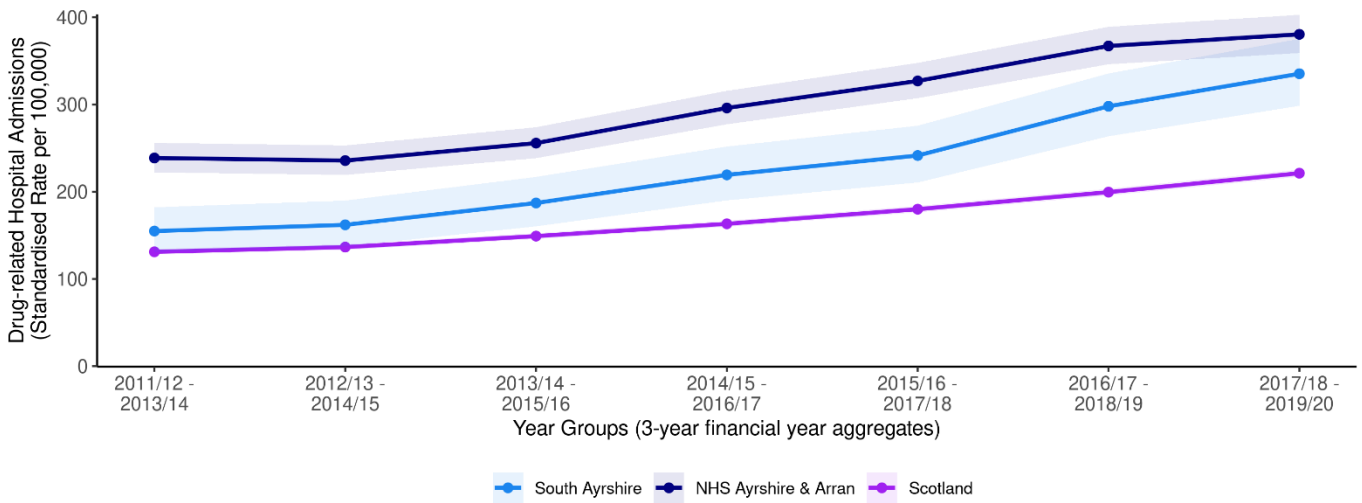


There were 335 drug-related hospital admissions per 100,000 age-sex standardised population⁴ in South Ayrshire for the most recent time period available (3-year financial year aggregate for 2017/18 - 2019/20).

This is a 116% increase since 2011/12 - 2013/14 (3 financial year aggregates).

A trend of the change in drug-related hospital admissions for South Ayrshire compared with Scotland and NHS Ayrshire & Arran is shown in the chart below from 2011/12 - 2013/14 onwards.

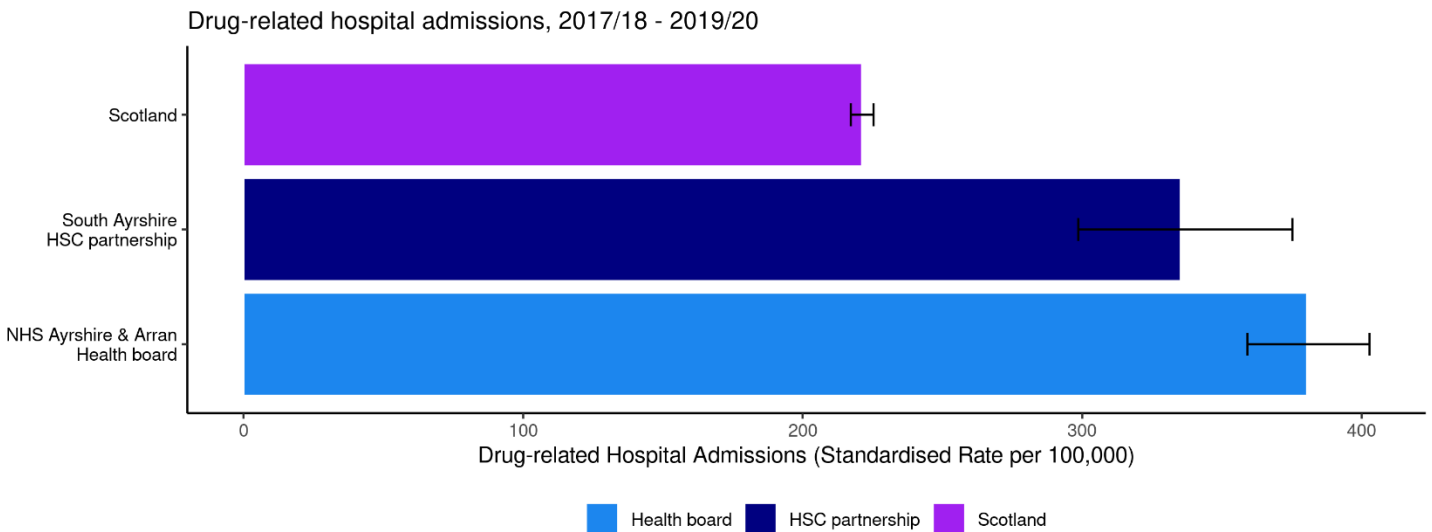
Figure 23: Trend of Drug-related Hospital Admission Rates by geographical area.



Source: ScotPHO

A comparison of areas at the most recent time period (2017/18 - 2019/20 aggregated financial years) is available below. This shows South Ayrshire HSCP has a higher rate of admissions (335) than Scotland (221) and NHS Ayrshire & Arran (380).

Figure 24: Comparison of Drug-related Hospital Admission Rates for the period 2017/18 - 2019/20.

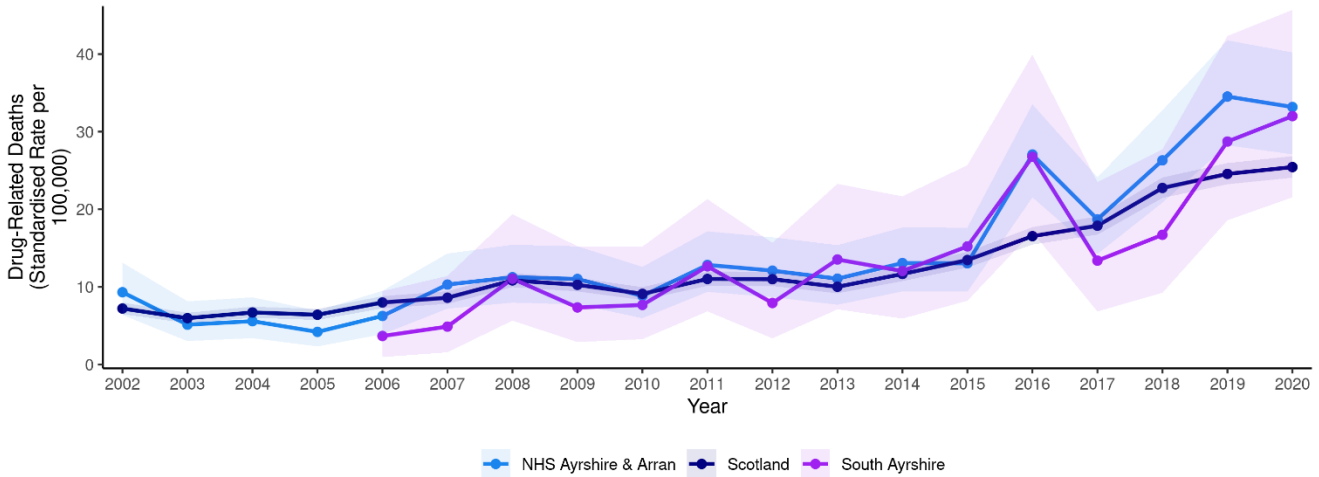


Source: ScotPHO

Drug-Related Deaths

Data on drug-related deaths is available by calendar year. The rate of drug-related deaths is currently higher in South Ayrshire than the rate in 2010 (317% change).

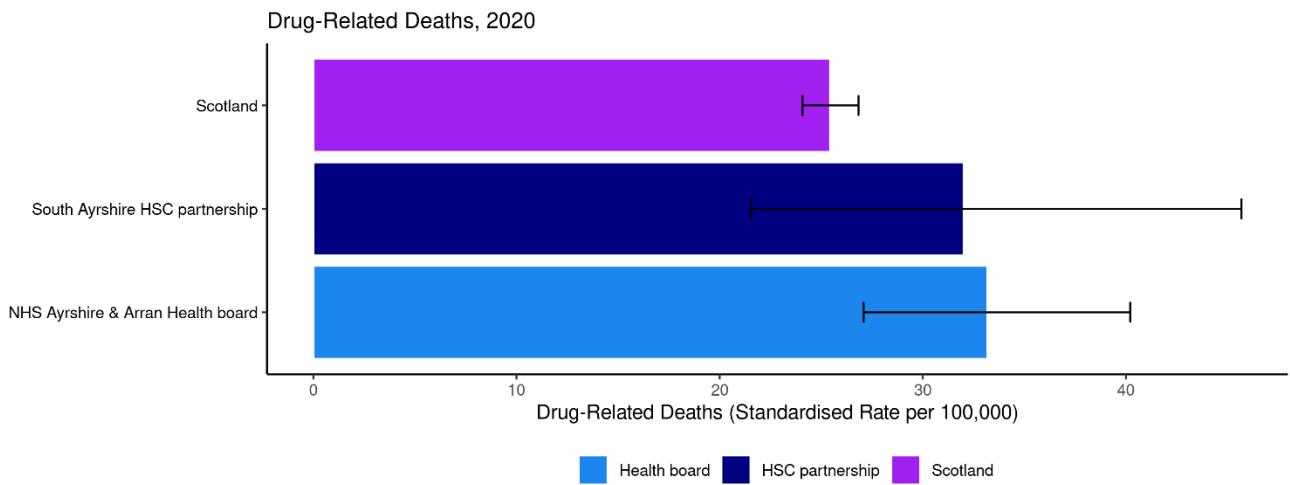
Figure 25: Trend of Drug-related Death Rates by geographical area.



Source: ScotPHO

A comparison across different areas illustrates that South Ayrshire HSCP has a higher alcohol-specific death rate compared to Scotland as a whole.

Figure 26: Comparison of Drug-related Death Rates for the period 2020



Source: ScotPHO

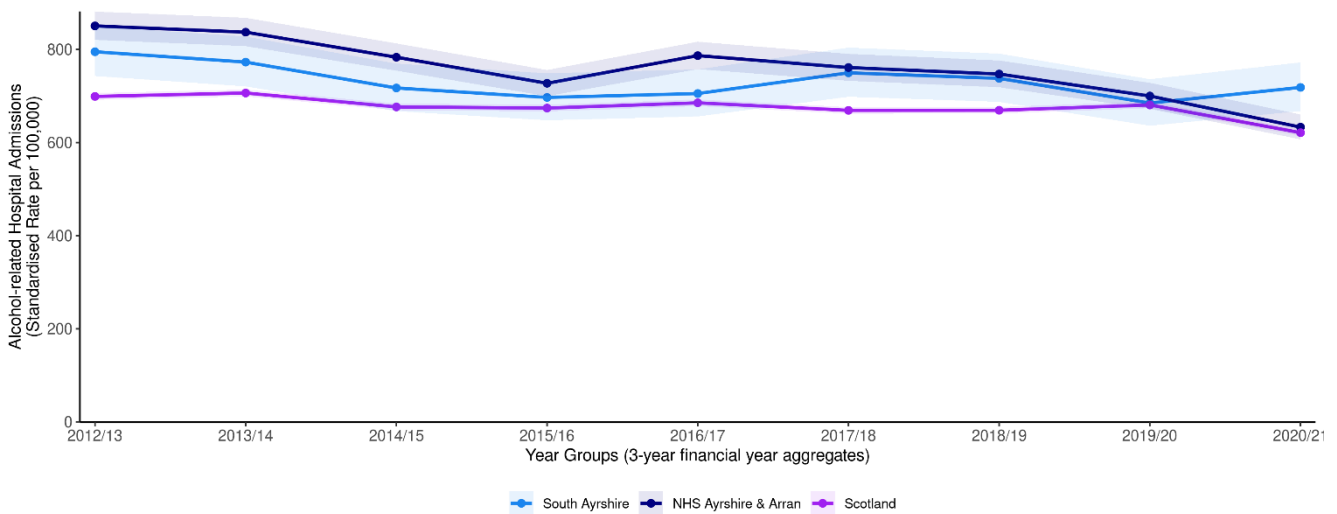
Alcohol-related Hospital Admissions



The 2020/21 alcohol-related admissions rate is 719 per 100,000 age-sex standardised population⁴, which is a 10% decrease overall since 2012/13.

The chart below shows a trend of alcohol-related hospital admissions for South Ayrshire compared with Scotland and NHS Ayrshire & Arran from financial year 2012/13 to 2020/21.

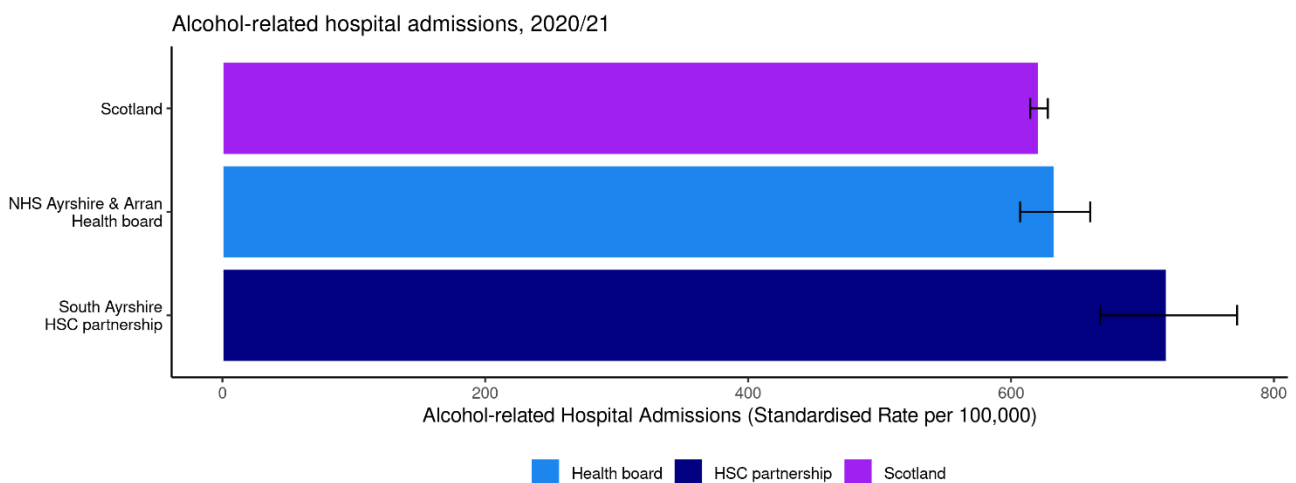
Figure 27: Trend of Alcohol-related Hospital Admission Rates by geographical area.



Source: ScotPHO

For the latest time period available 2020/21, South Ayrshire had a higher alcohol-related hospital admissions rate (719) compared to both NHS Ayrshire & Arran (633) and across the whole of Scotland (621), as shown below in Figure 28.

Figure 28: Comparison of Alcohol-related Hospital Admission Rates for 2020/21.

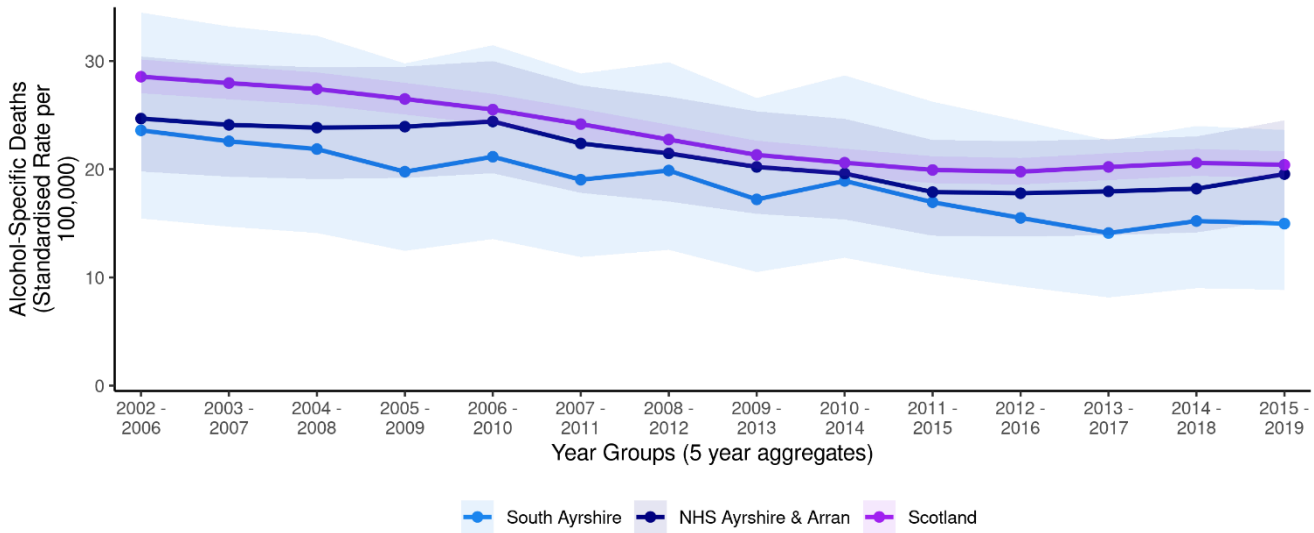


Source: ScotPHO

Alcohol-Specific Deaths

Data on alcohol-specific deaths is available as 5 year aggregates. The rate of alcohol-specific deaths is currently lower in South Ayrshire than the rate in 2009-2013 (-13% change).

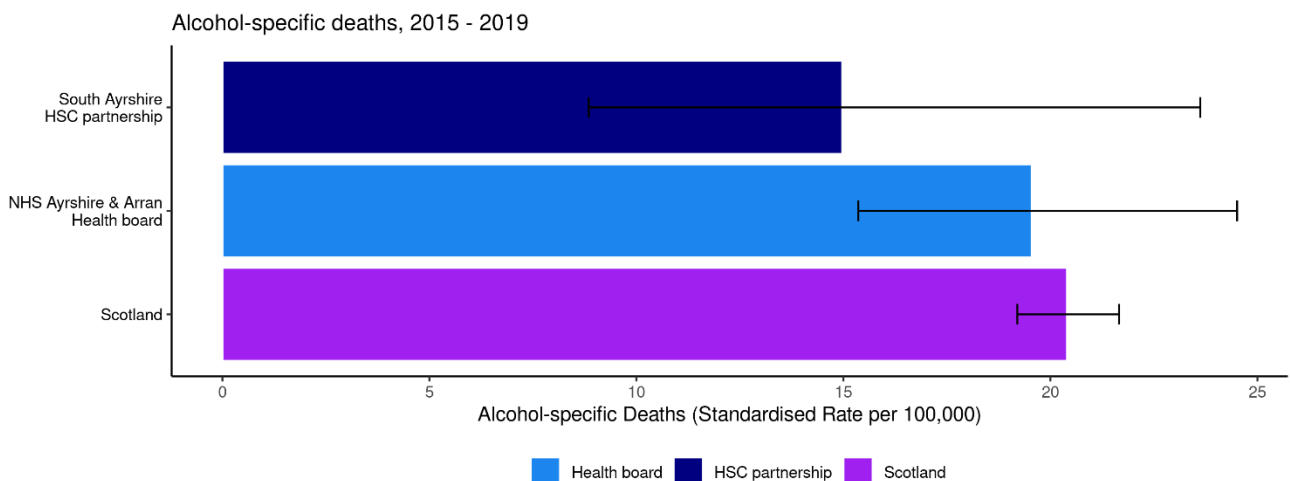
Figure 29: Trend of Alcohol-Specific Death Rates by geographical area.



Source: ScotPHO

A comparison across different areas illustrates that South Ayrshire HSCP has a lower alcohol-specific death rate compared to Scotland as a whole.

Figure 30: Comparison of Alcohol-related Death Rates for the period 2015 - 2019 (5 year aggregate).



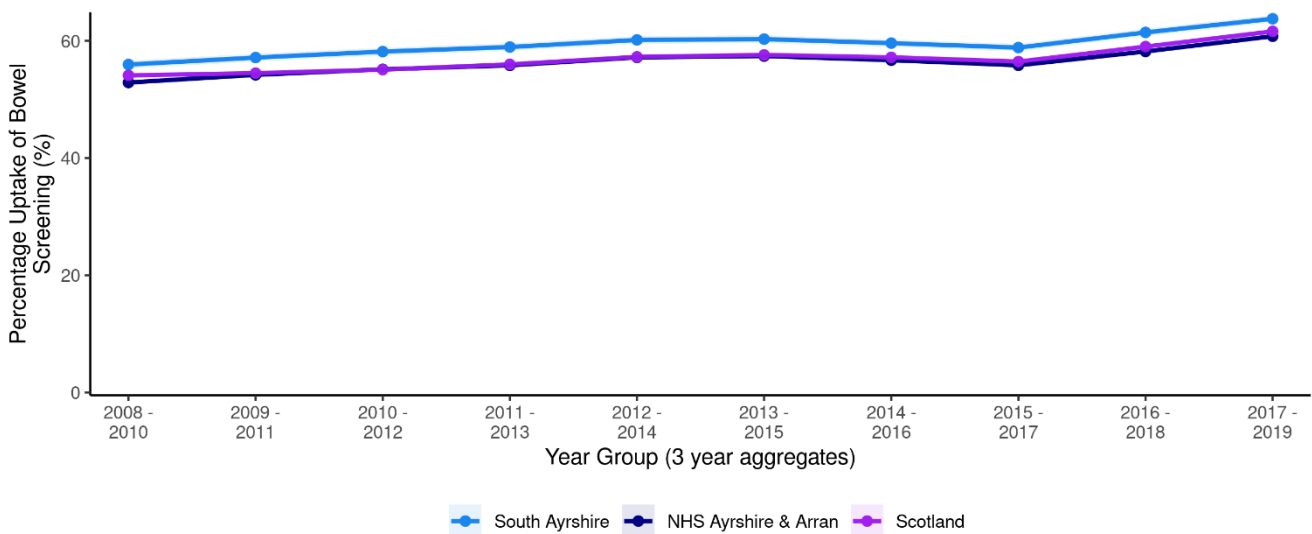
Source: ScotPHO

Bowel Screening Uptake

Bowel screening is offered every two years to eligible men and women aged between 50-74 years old. Eligible people are posted a test kit which is completed at home. Since 1st April 2013, those aged 75 and over can also self-refer and opt into screening.

A trend of the percentage uptake of bowel screening among the eligible population is shown below for South Ayrshire HSCP compared with Scotland and NHS Ayrshire & Arran. Data is suppressed into 3 year aggregates. The 2017 - 2019 uptake rate for South Ayrshire is **64%**.

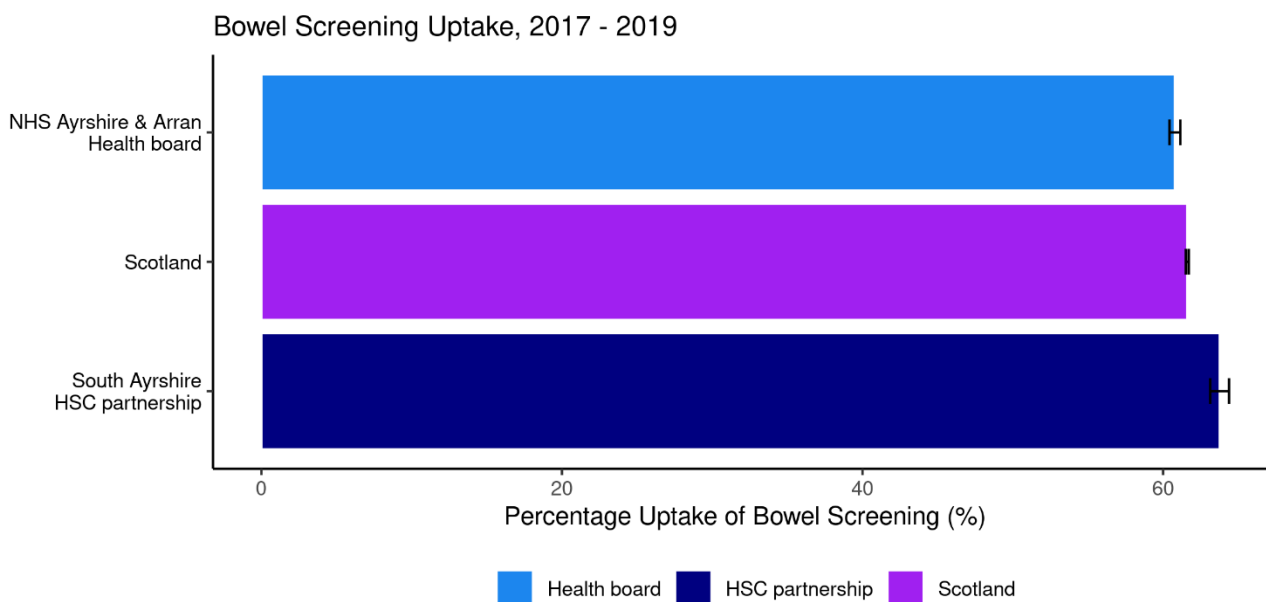
Figure 31: Trend of Bowel Screening Uptake for eligible men and women, by geographical area.



Source: ScotPHO

Compared with Scotland, South Ayrshire HSCP has a higher percentage uptake of bowel cancer screening for the period 2017 - 2019.

Figure 32: Comparison of Bowel Screening Uptake for 2017 - 2019.

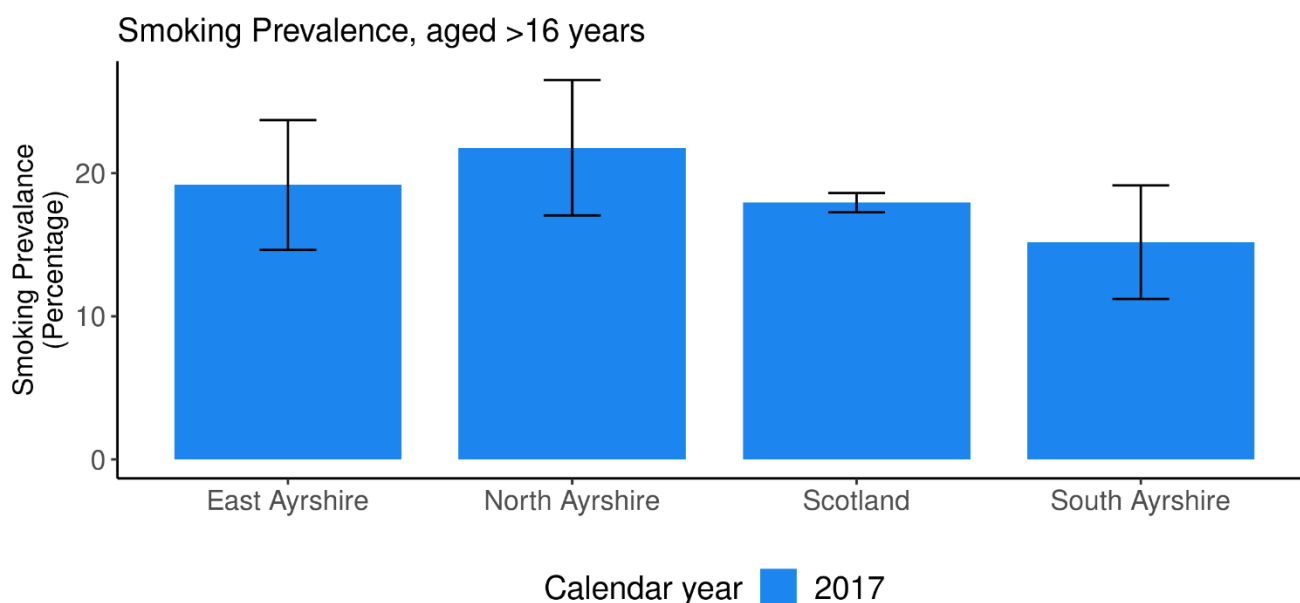


Source: ScotPHO

Smoking Prevalence

Data on smoking prevalence is available from the Scottish Survey Core Questions. For South Ayrshire, the prevalence is 15%.

Figure 33: Smoking Prevalence by geographical area, 2017.



Source: Scottish Survey Core Questions

Hospital and Community Care

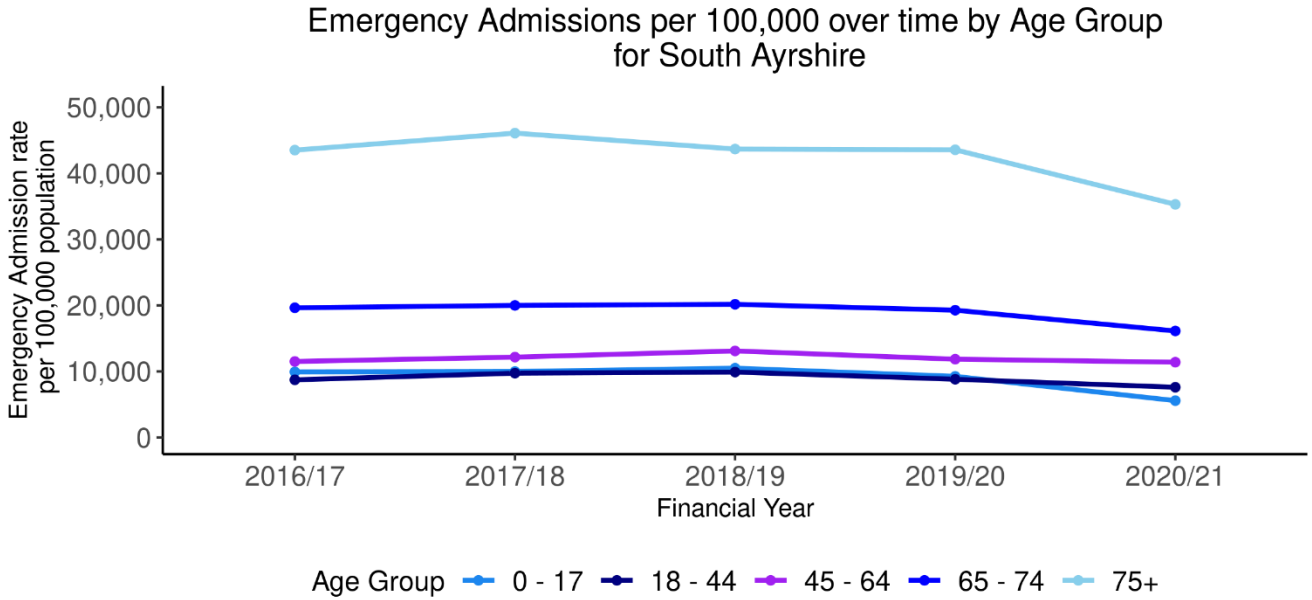
This section includes acute and mental health acute hospital data, delayed discharges and A&E attendances.

For the most recent time periods available, South Ayrshire had:

- **12,833** emergency health hospital admissions per 100,000 population.
- **92,950** unscheduled hospital bed days per 100,000 population.
- **21,612** A&E attendances per 100,000 population.
- **17,797** delayed discharges per 100,000 population.
- **801** falls admissions per 100,000 population.
- **123** readmissions (28 day) per 1,000 discharges.
- **1,788** potentially preventable hospital admissions per 100,000 population.
- **89%** of people spent their last 6 months of life in a community setting.

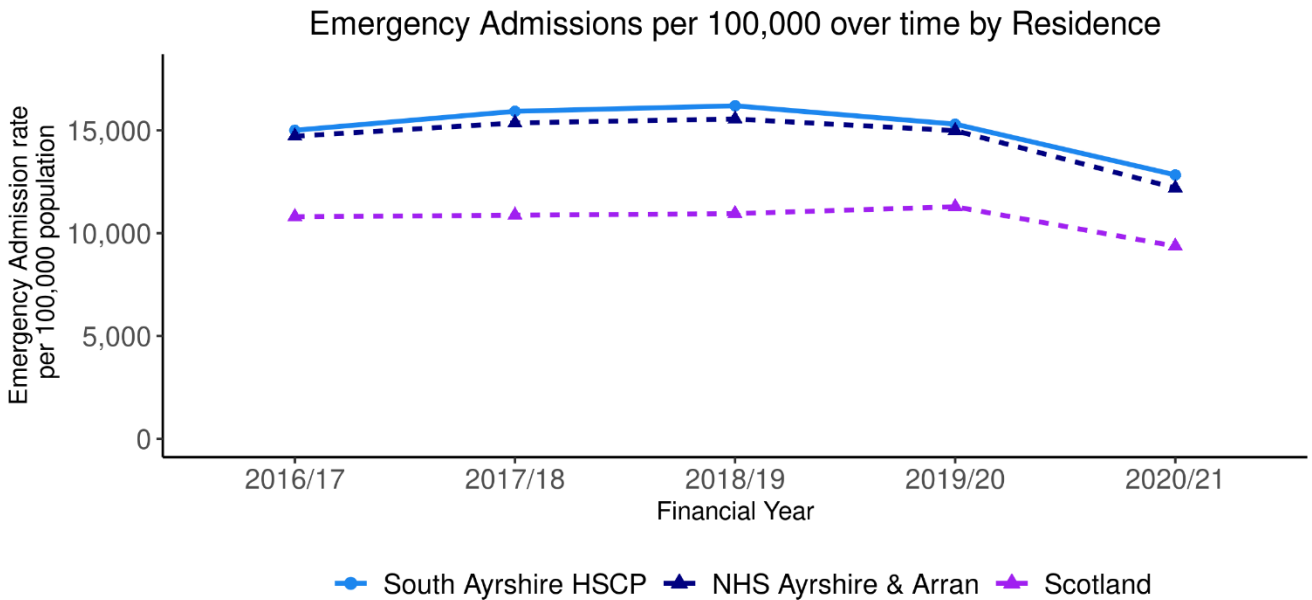
Emergency Admissions

Figure 34: Emergency admissions by age group



Source: PHS SMR01

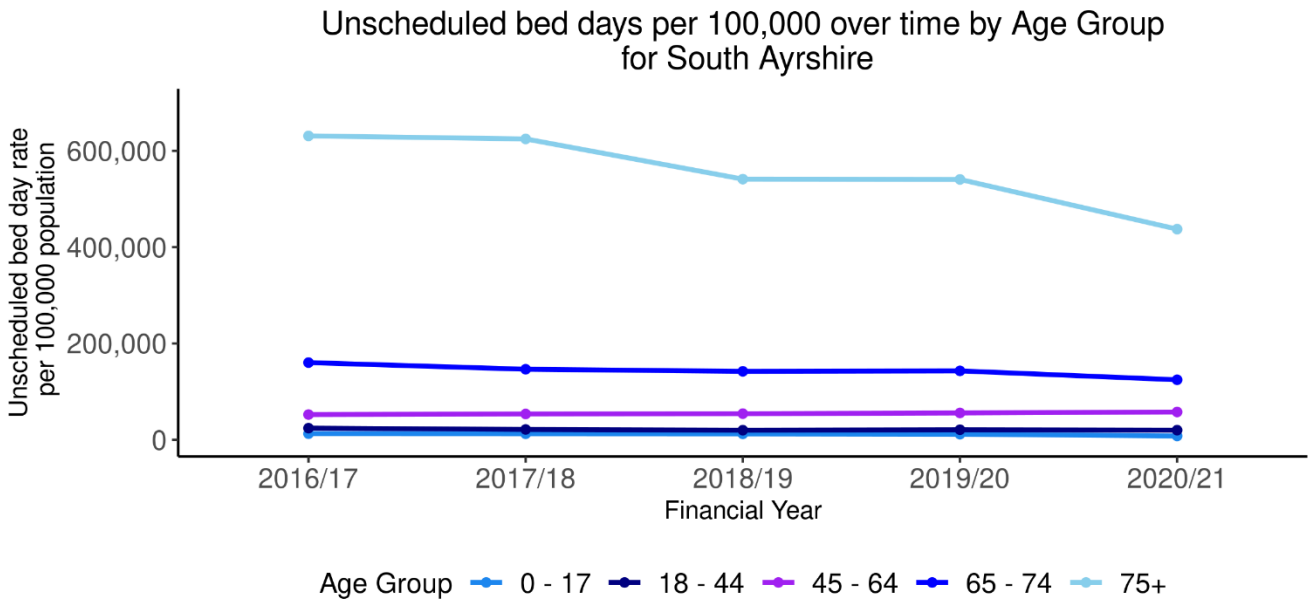
Figure 35: Emergency admissions by geographical area



Source: PHS SMR01

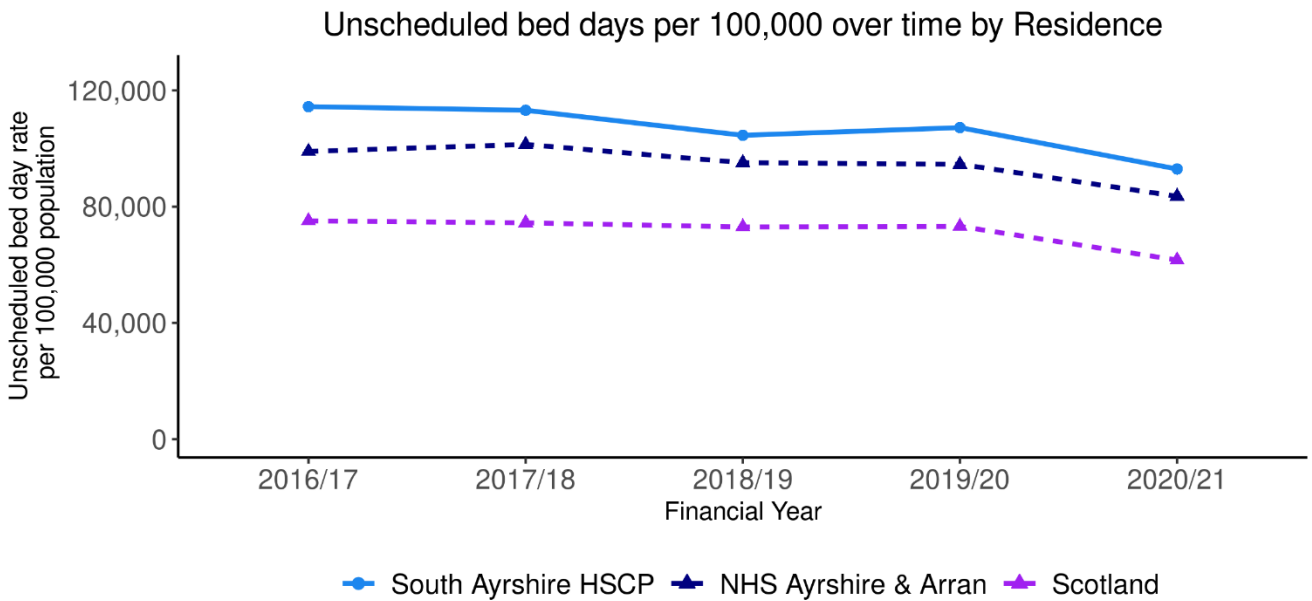
Unscheduled Bed Days

Figure 36: Unscheduled bed days by age group



Source: PHS SMR01

Figure 37: Unscheduled bed days by geographical area



Source: PHS SMR01

A&E Attendances

Figure 38: A&E attendances by age group

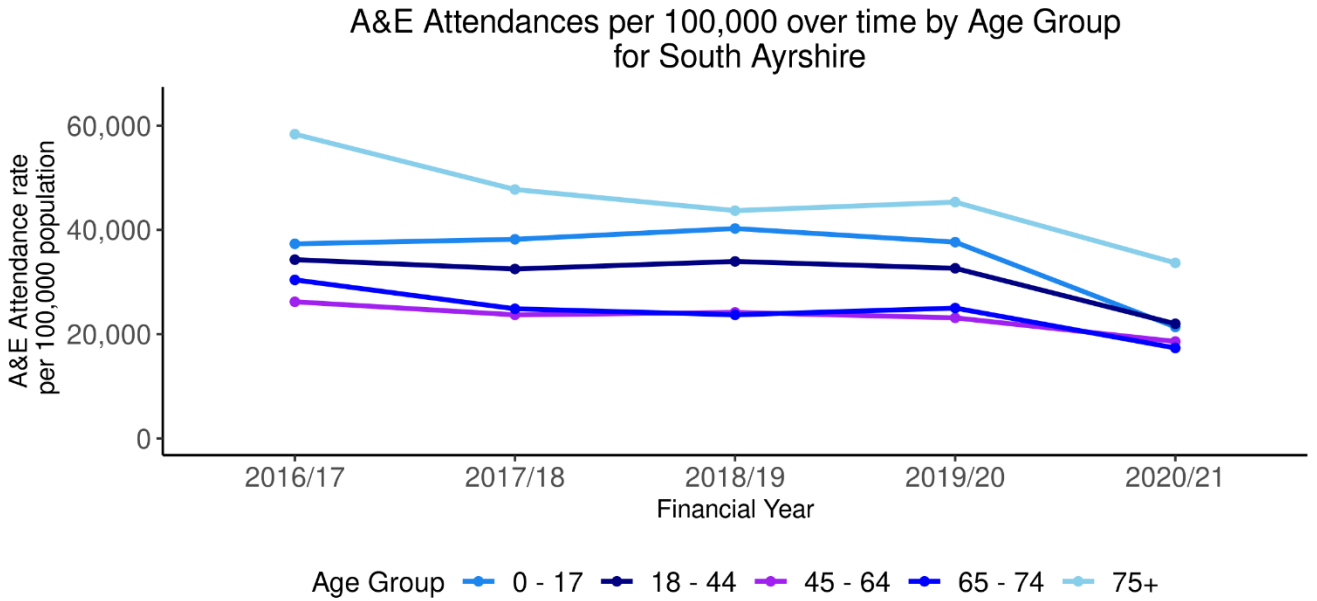
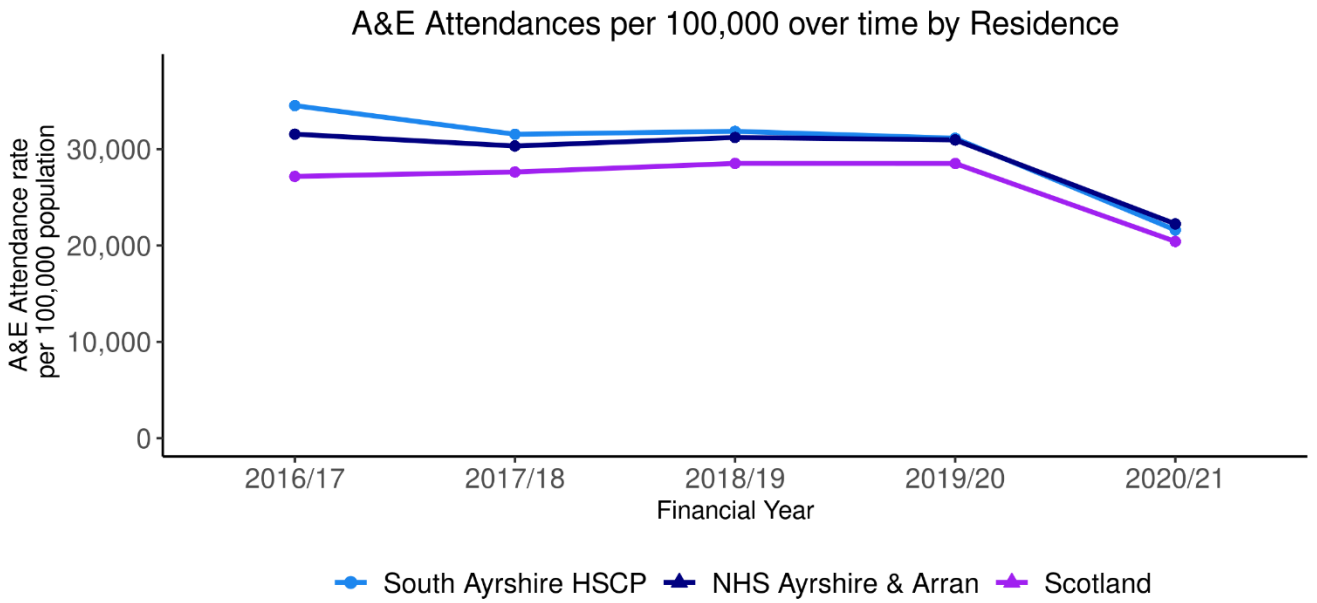
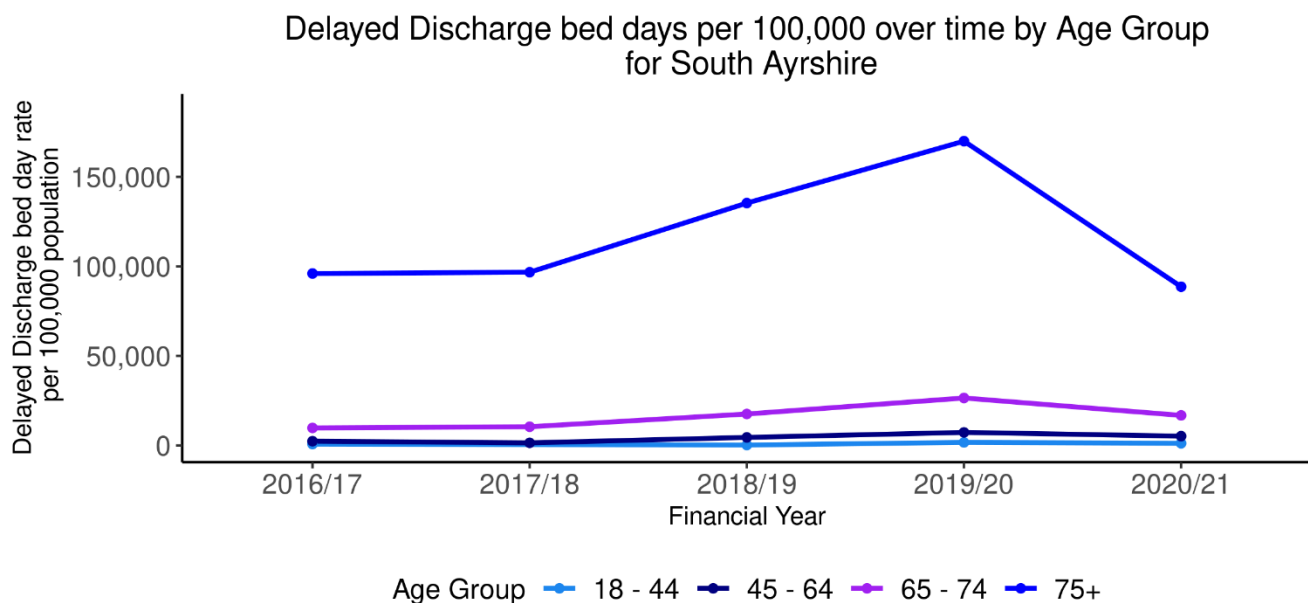


Figure 39: A&E attendances by geographical area



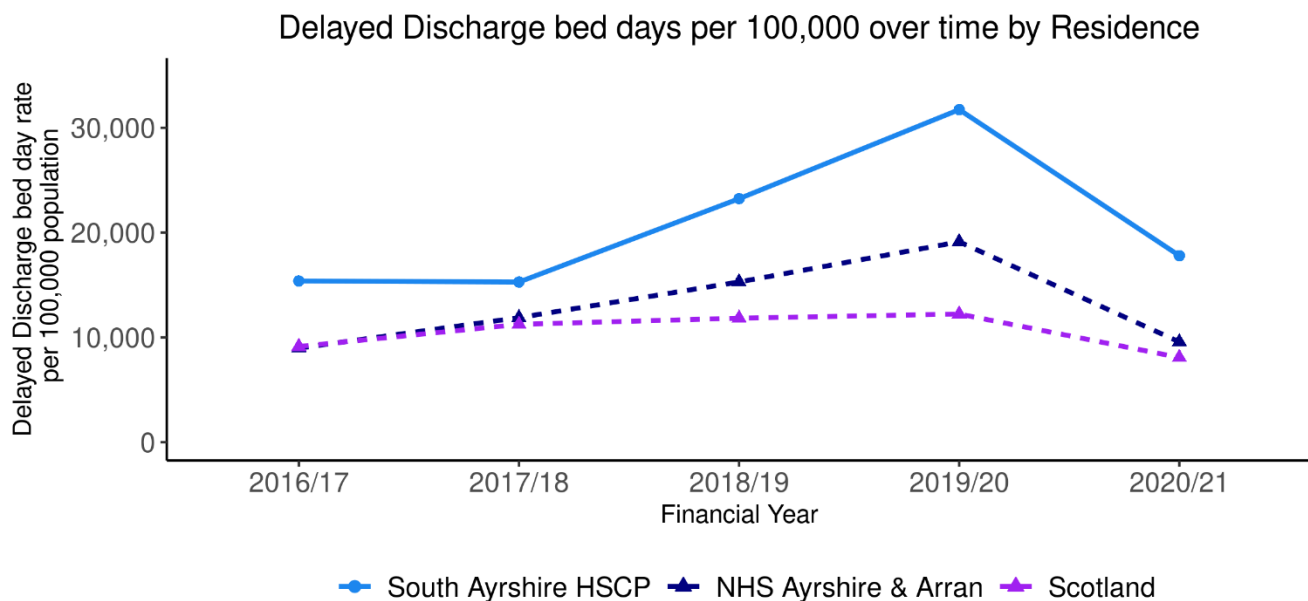
Delayed Discharges

Figure 40: Delayed discharges by age group



Source: PHS Delayed Discharges

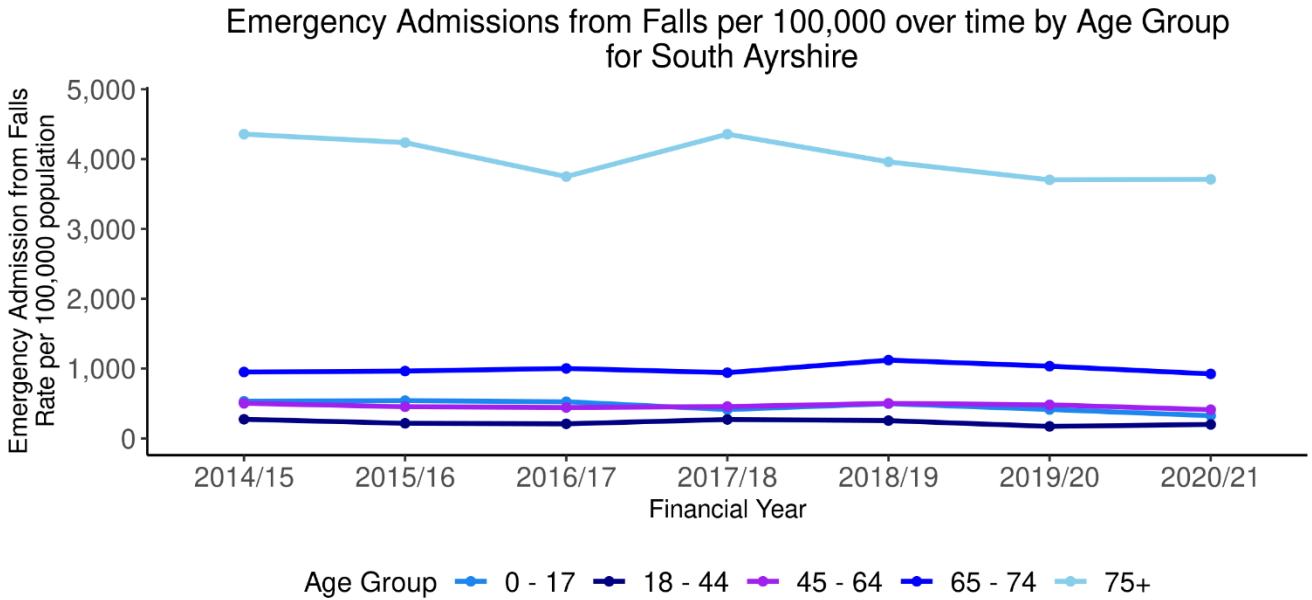
Figure 41: Delayed discharges by geographical area



Source: PHS Delayed Discharges

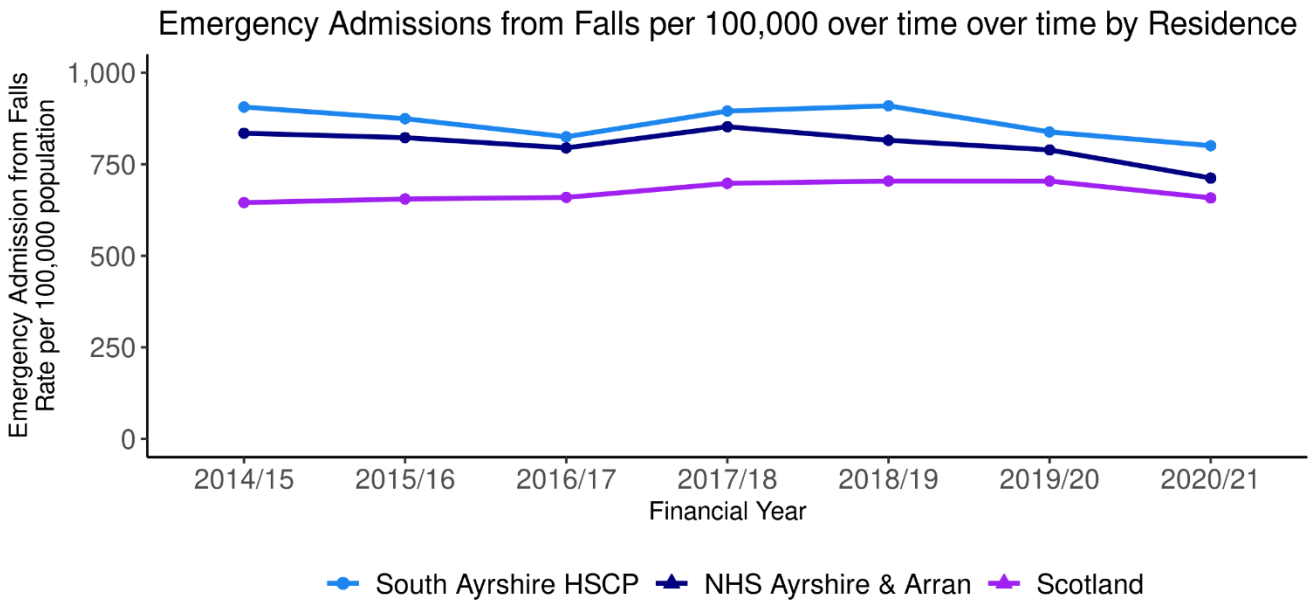
Emergency Admissions from a Fall

Figure 42: Falls by age group



Source: PHS SMR01

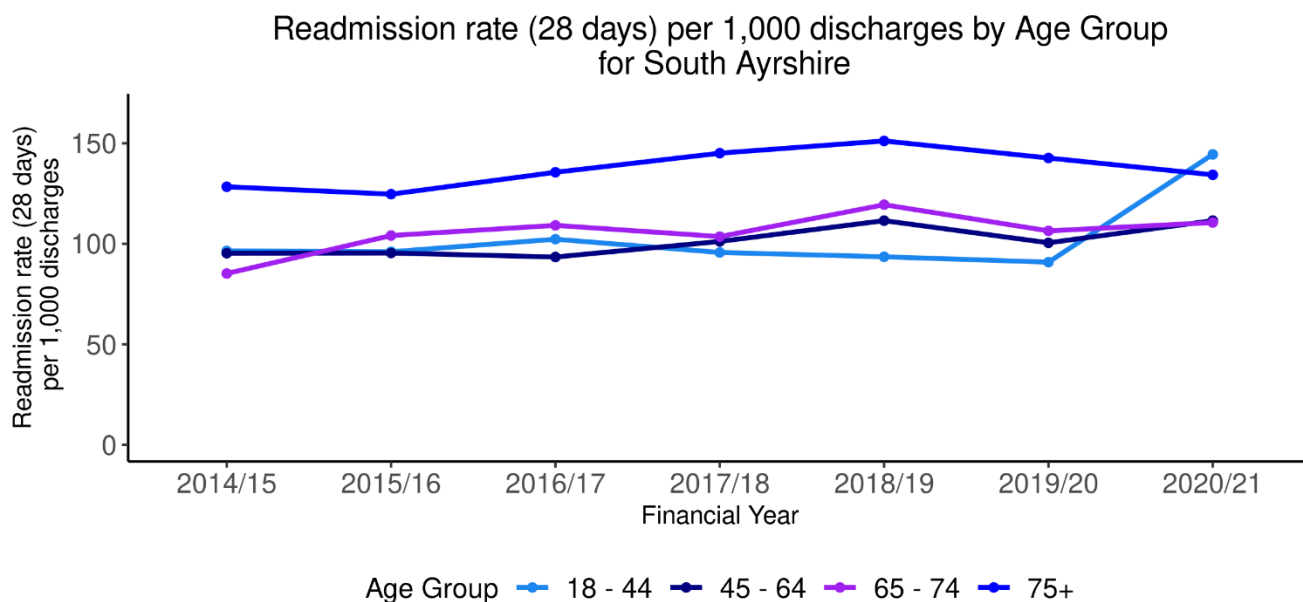
Figure 43: Falls by geographical area



Source: PHS SMR01

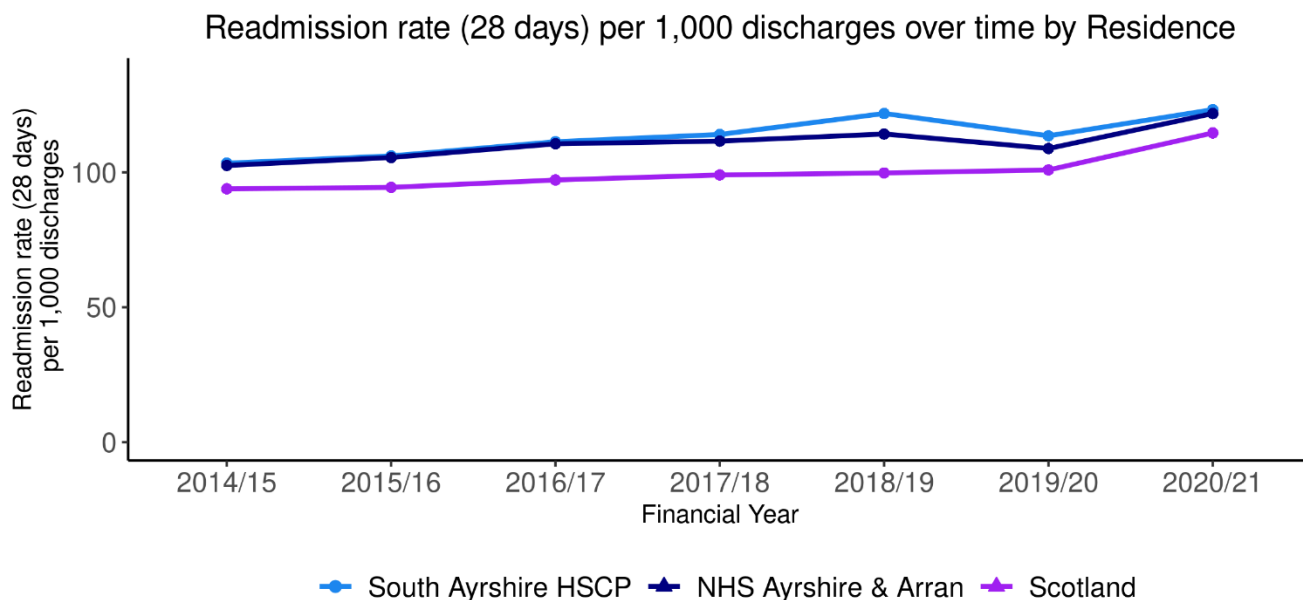
Emergency Readmissions (28 days)

Figure 44: Emergency readmissions by age group



Source: PHS SMR01

Figure 45: Emergency readmissions by geographical area

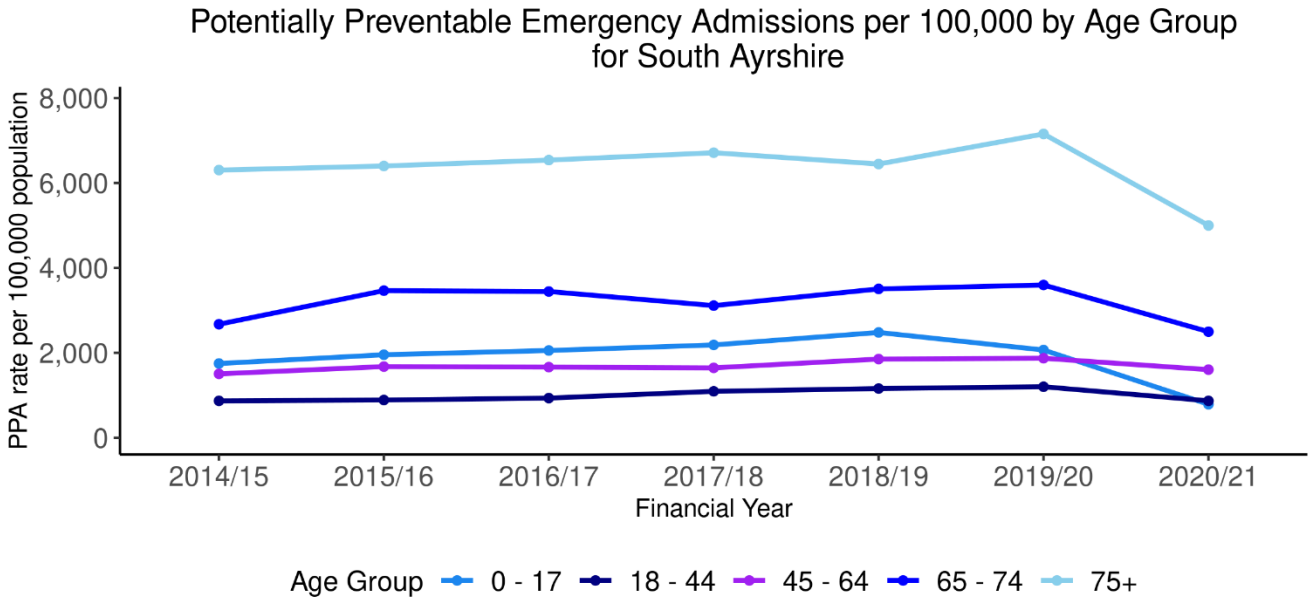


Source: PHS SMR01

Potentially Preventable Admissions (PPAs)

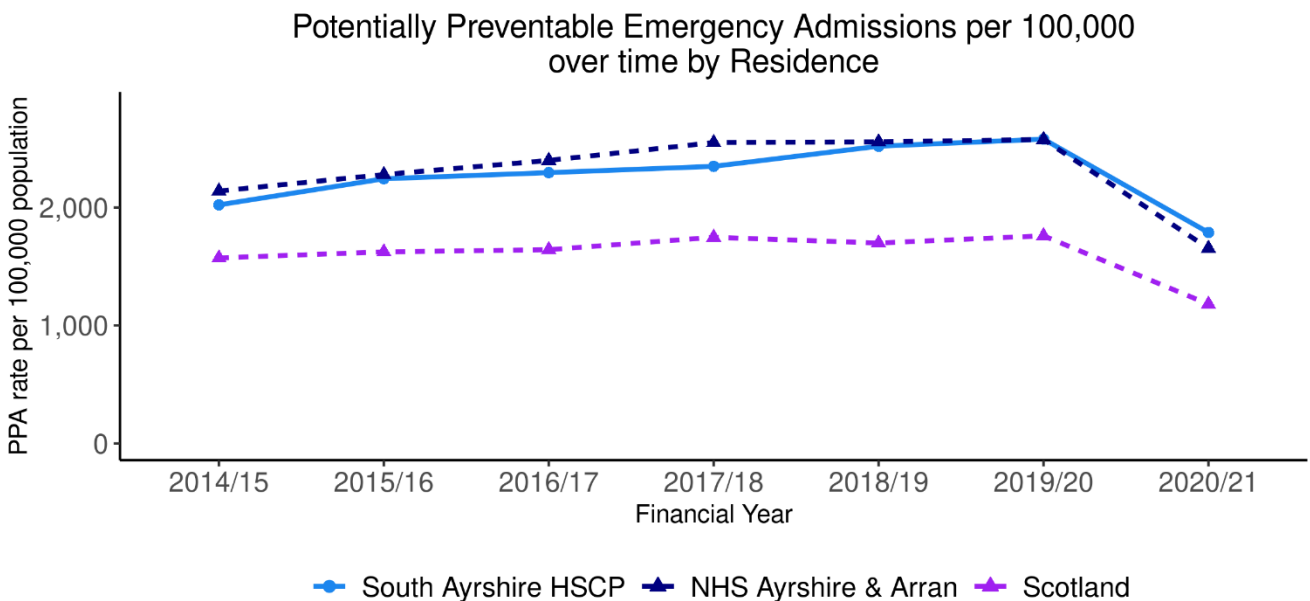
Information on which conditions are counted as PPAs is available in Appendix 2.

Figure 46: PPAs by age group



Source: PHS SMR01

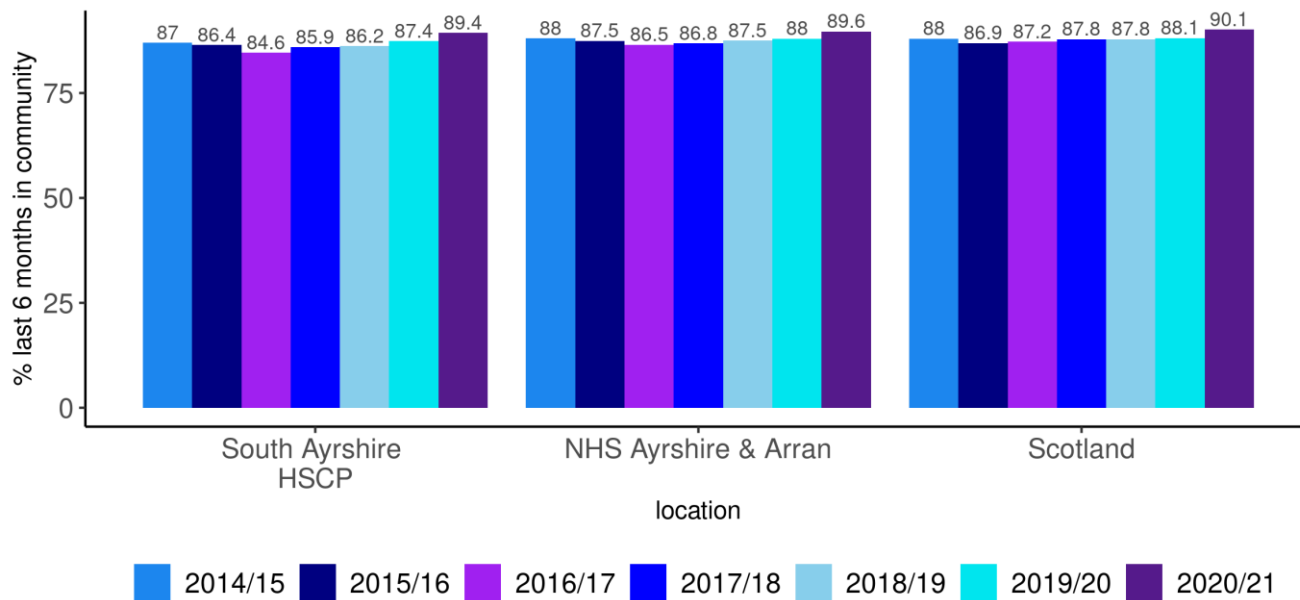
Figure 47: PPAs by geographical area



Source: PHS SMR01

% Last 6 months in a Community Setting

Figure 48: Last 6 months in a community setting by geographical area



Source: NRS Death Records, PHS SMR01, SMR01E, SMR04

Hospital Care for Mental Health Specialties

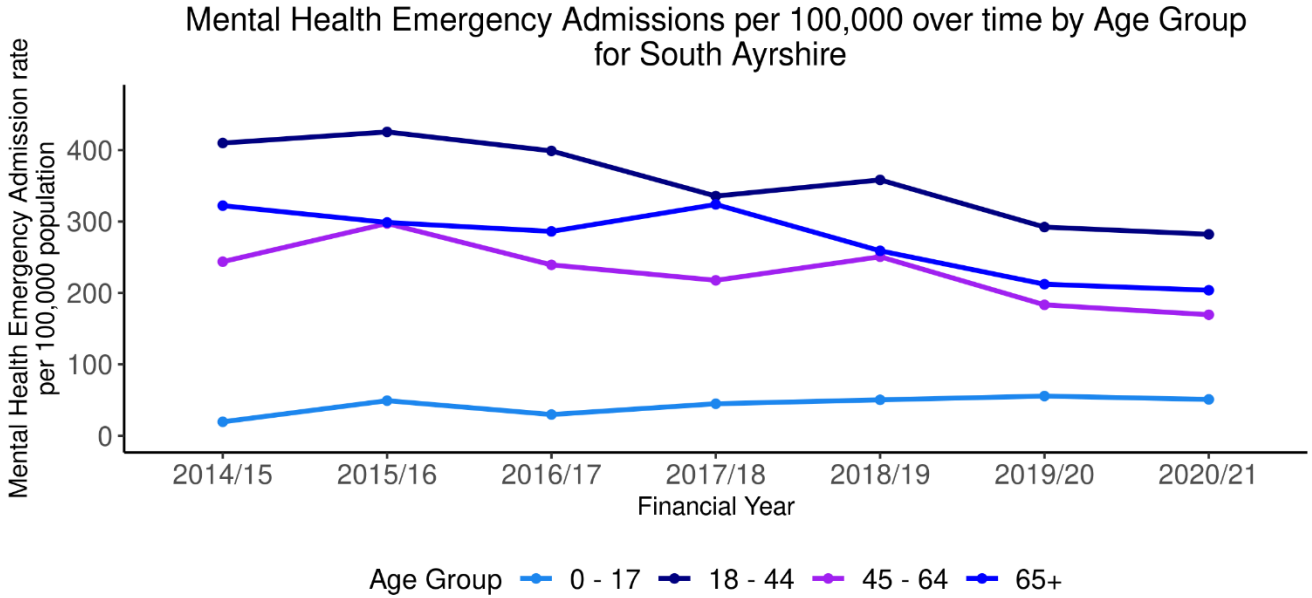
This section looks at hospital admissions to mental health specialties.

For the most recent time periods available, South Ayrshire had:

- **188** emergency mental health hospital admissions per 100,000.
- **14,930** unscheduled mental health hospital bed days per 100,000.
- **4,069** delayed discharges per 100,000.

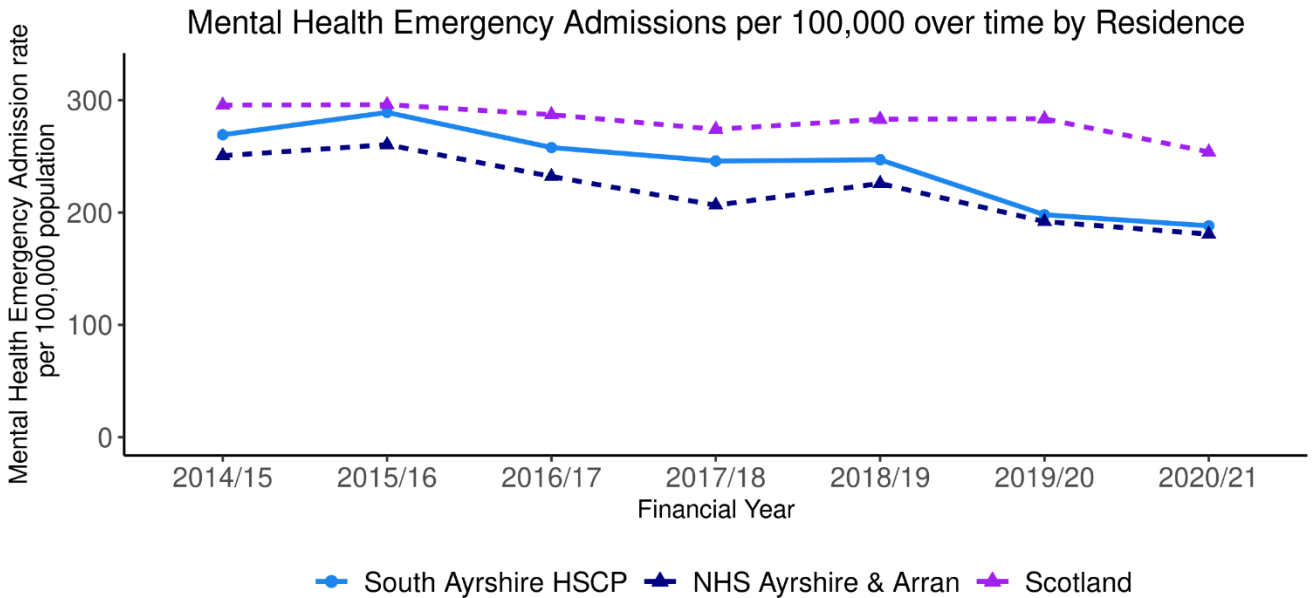
Emergency Admissions (MH)

Figure 49: MH Emergency admissions by age group



Source: PHS SMR04

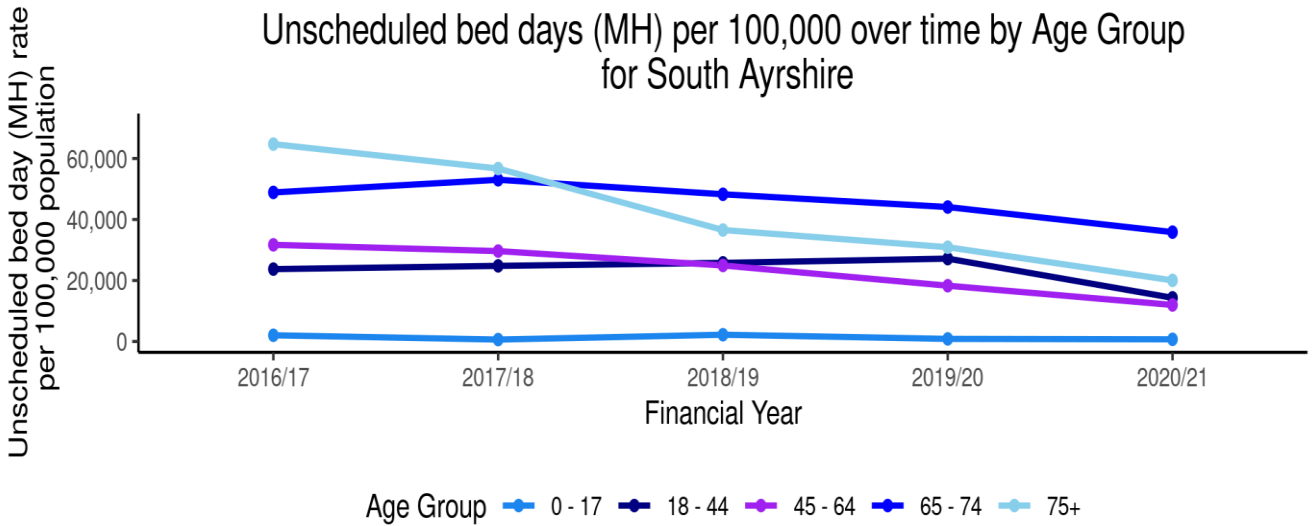
Figure 50: MH Emergency admissions by geographical area



Source: PHS SMR04

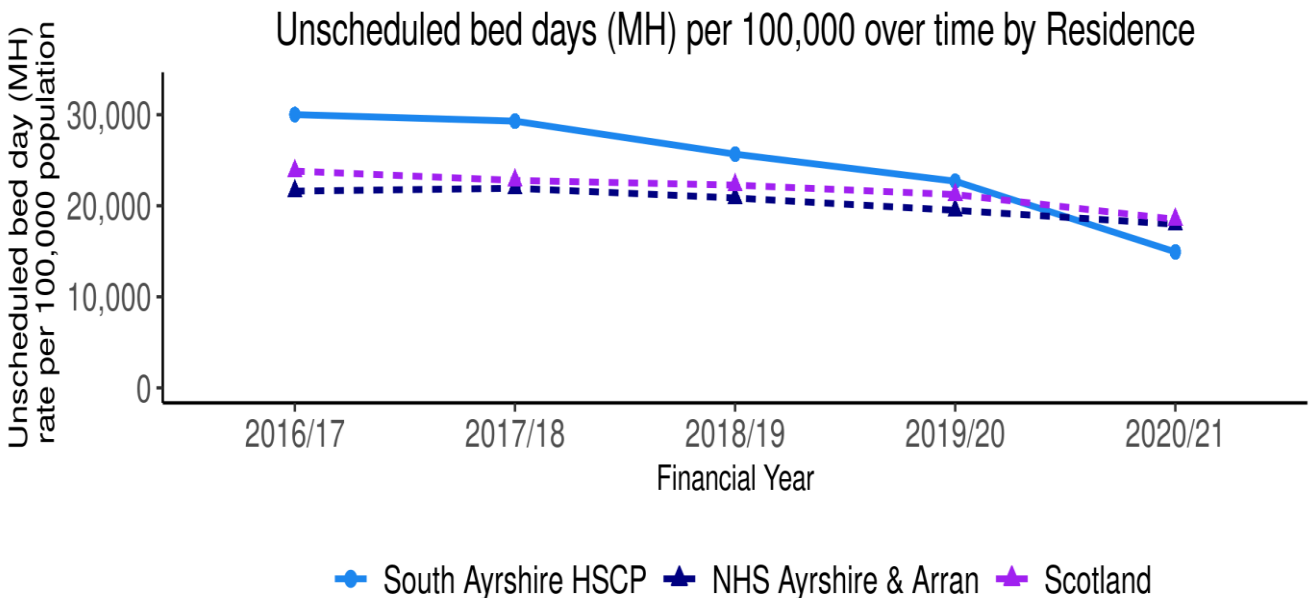
Unscheduled Bed Days (MH)

Figure 51: MH Unscheduled bed days by age group



Source: PHS SMR04

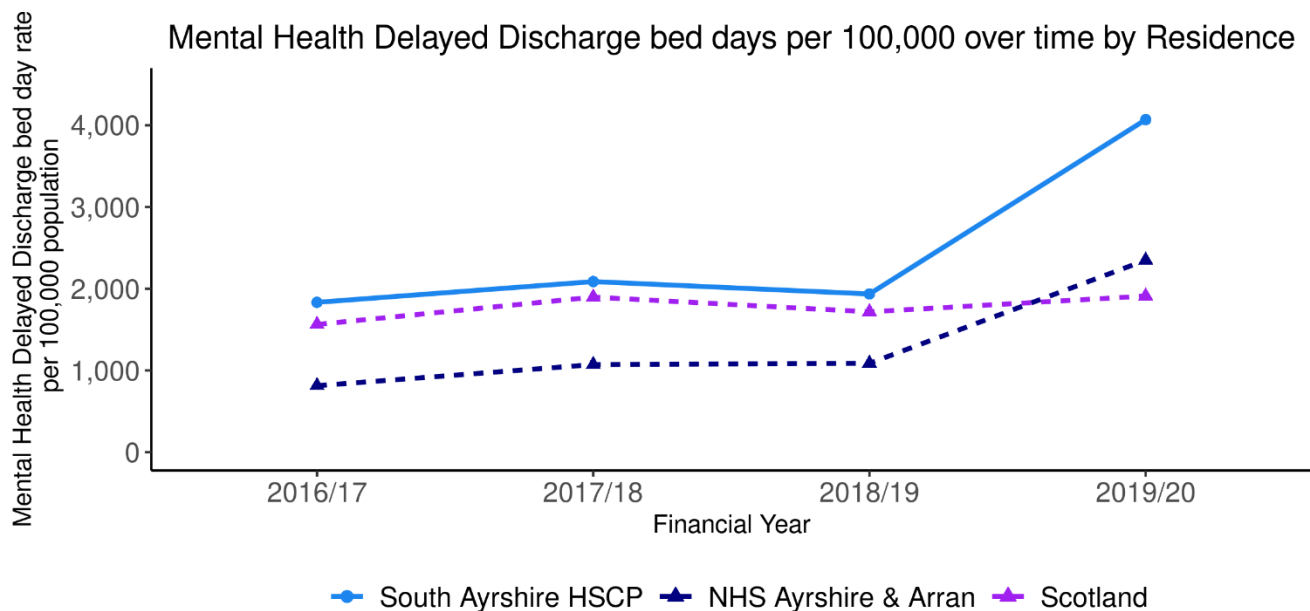
Figure 52: MH Unscheduled bed days by geographical area



Source: PHS SMR04

Delayed Discharges (MH)

Figure 53: MH Delayed discharges by geographical area



Source: PHS Delayed Discharges

Children and Young People

For the most recent time periods available, South Ayrshire had:

22% of Mothers exclusively breastfeeding at 6-8 week review.

17% of Mothers smoking during first antenatal booking appointment.

28% of Teenage Pregnancies in Under 20s

a **98%** uptake of 6 in 1 Immunisation for the eligible population.

a **96%** uptake of 24 months MMR Immunisation for the eligible population

78% of Primary 1 Children with no dental caries

81% of Primary 1 children with healthy weight

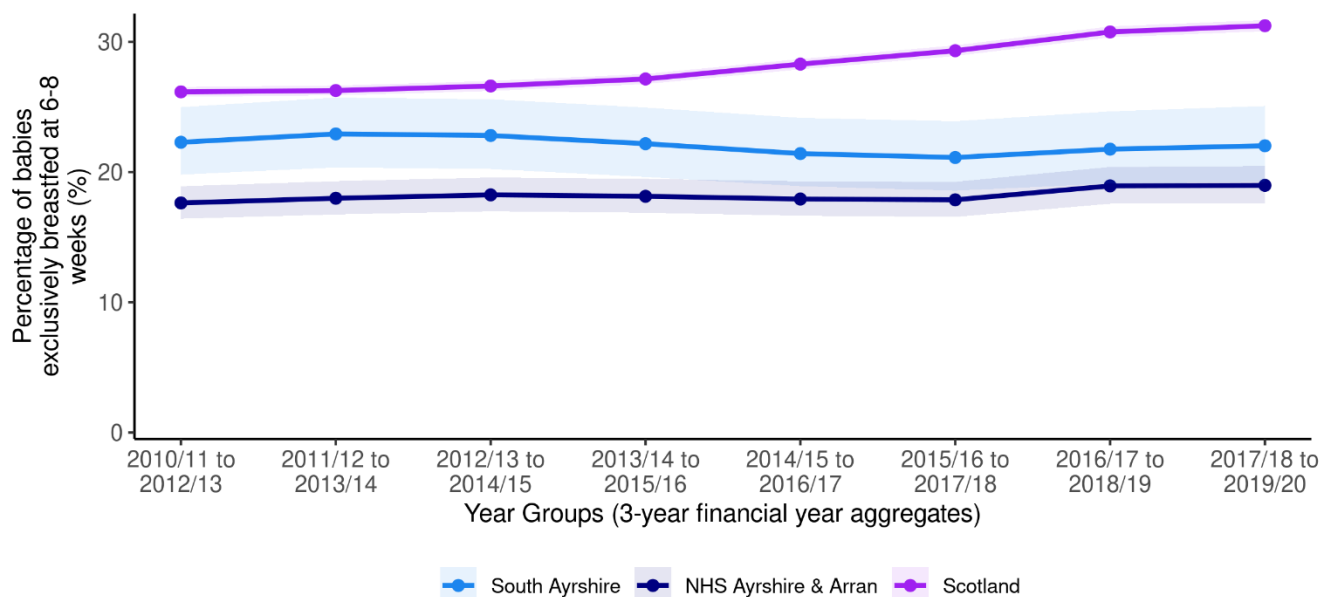
1.7 (rate per 1000) Children on the Child Protection Register

15 (rate per 1000) Children looked after by Local Authority

Maternity Breastfeeding

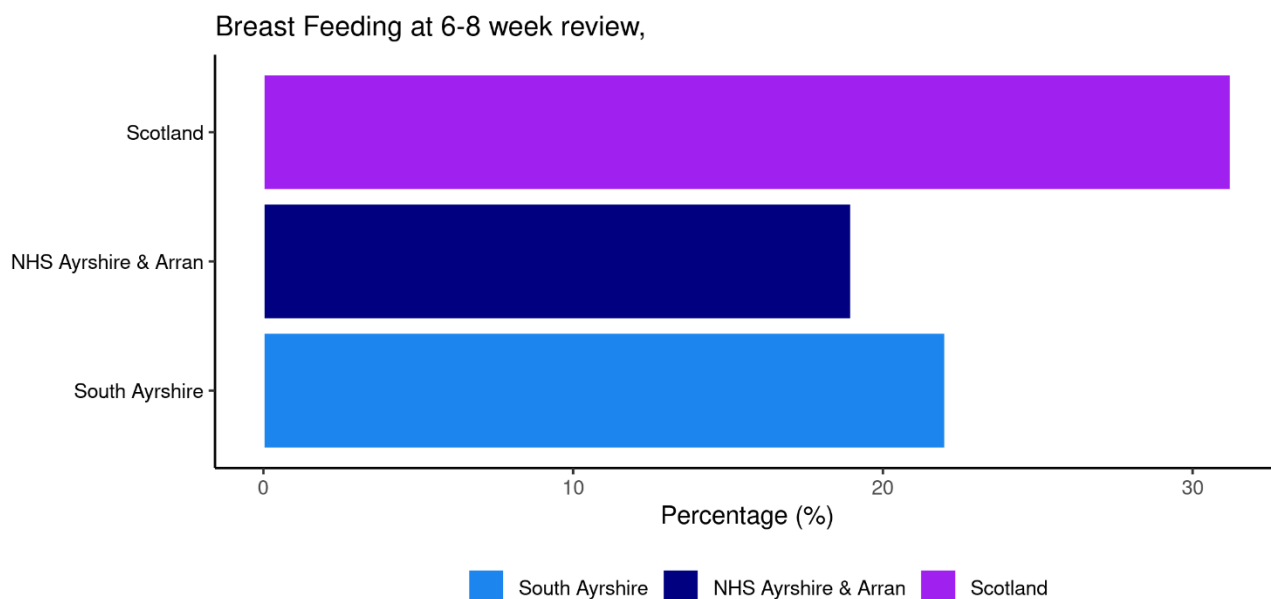
In the latest time period available from 2017/18-2019/20 (3-year financial aggregate), the percentage of babies exclusively breastfed at 6-8 weeks in South Ayrshire was 22%. A time trend since 2010/11 is shown in Figure 54 which compares South Ayrshire with Scotland and NHS Ayrshire & Arran.

Figure 54: Percentage of babies exclusively breastfed at 6-8 weeks by geographical area.



Source: ScotPHO

Figure 55: Percentage of babies exclusively breastfed at 6-8 week review by Locality (2019-2020)



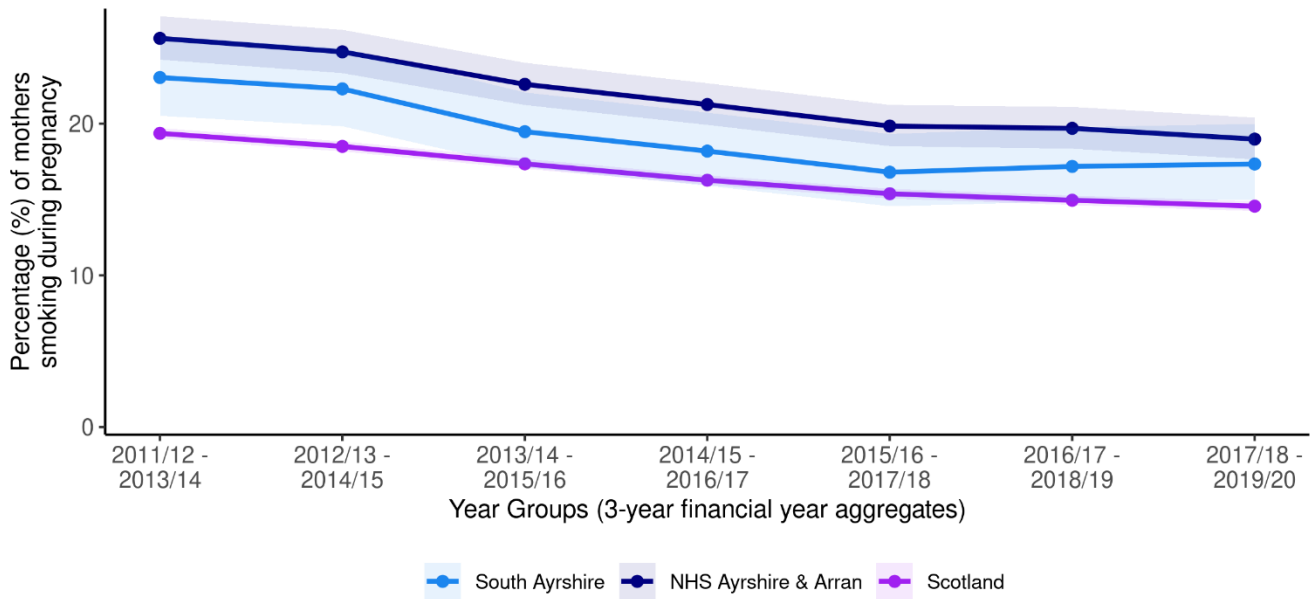
Source: ScotPHO

The percentage of babies exclusively breastfed at 6-8 weeks is currently lower in South Ayrshire than compared to other Scotland and NHS Ayrshire and Arran.

Maternal Smoking

In the latest time period available from 2017/18-2019/20 (3 financial year aggregate), the percentage of women smoking during pregnancy in South Ayrshire was 17% in comparison to 19% for NHS Ayrshire & Arran and 15% across the whole of Scotland. A time trend from 2011/12-2013/14 is shown below in Figure 56.

Figure 56: Percentage of women smoking during pregnancy by geographical area

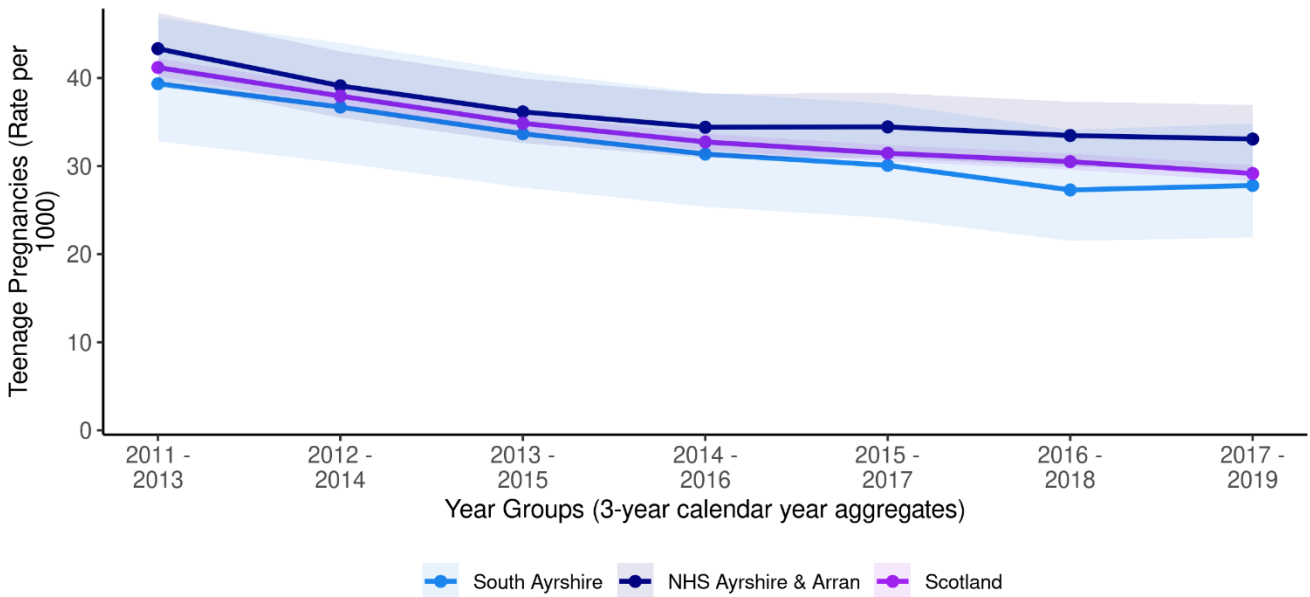


Source: ScotPHO

Teenage Pregnancies

A trend of the percentage of teenage pregnancies is shown below for South Ayrshire. For the most recent time period available (2017-2019, 3-year aggregate), South Ayrshire had a lower percentage of teenage pregnancies (28%) compared with NHS Ayrshire & Arran and Scotland.

Figure 57: Percentage of Teenage Pregnancies by geographical area

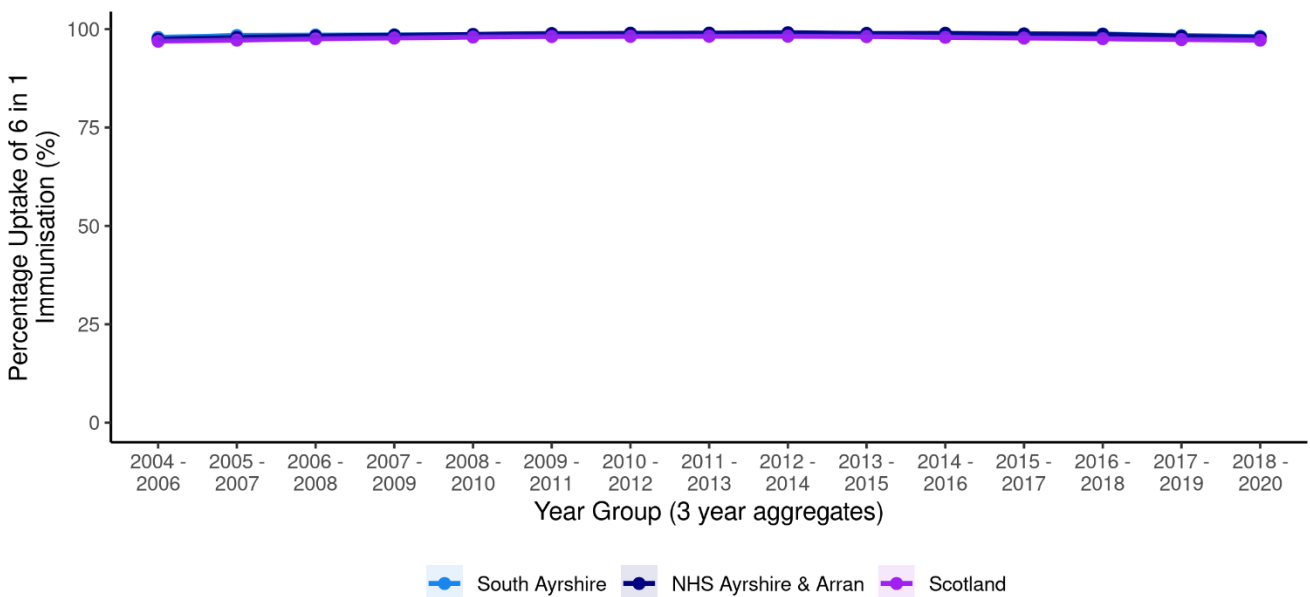


Source: ScotPHO

6 in 1 Immunisation

A trend of the percentage uptake of 6 in 1 Immunisation among the eligible population is shown below for South Ayrshire compared with Scotland and NHS Ayrshire & Arran. The 2018 - 2020 uptake rate for South Ayrshire is 98%.

Figure 58: Percentage uptake of 6 in 1 Immunisation by geographical area

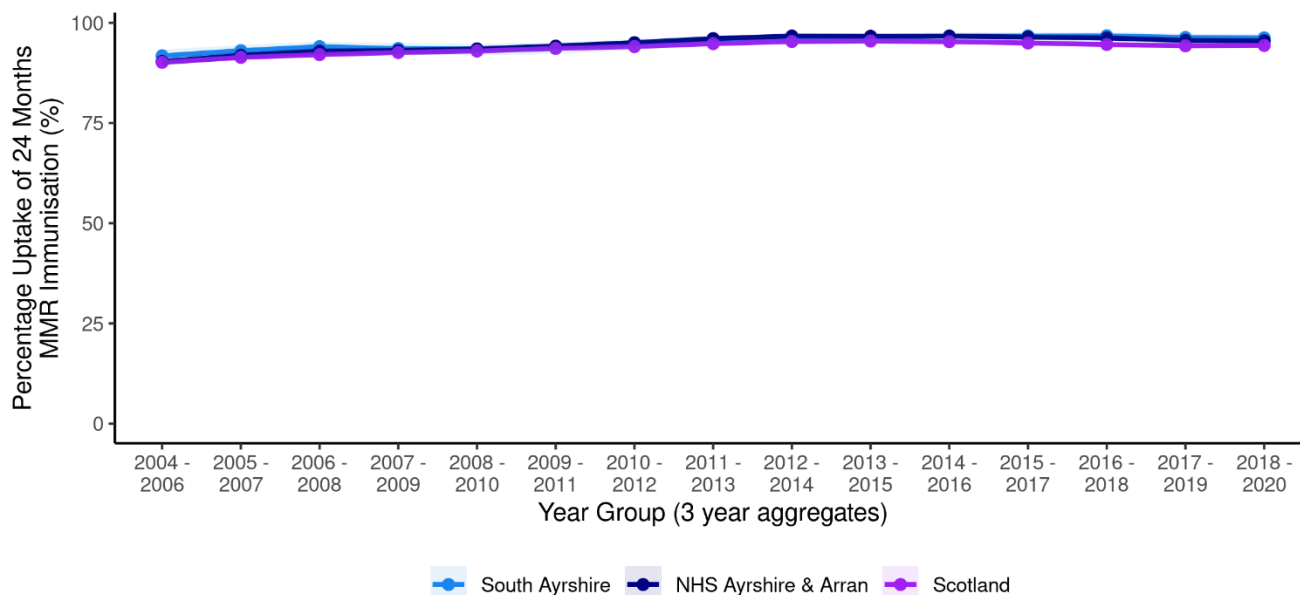


Source: ScotPHO

24 Months MMR Immunisation

A trend of the percentage uptake of 6 in 1 Immunisation among the eligible population is shown below for South Ayrshire compared with Scotland and NHS Ayrshire & Arran. The 2018 - 2020 uptake rate for South Ayrshire is 96%.

Figure 59: Percentage uptake of 24 months MMR Immunisation by geographical area

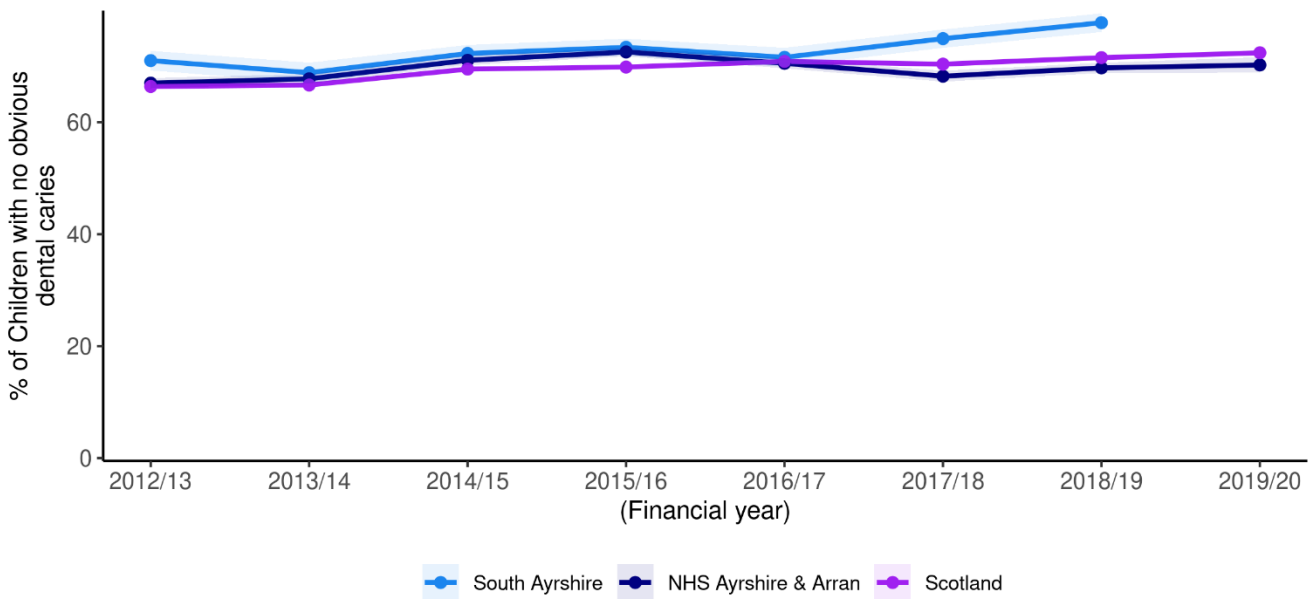


Source: ScotPHO

Dental Caries

In the latest time period available for South Ayrshire (2018/19, 3 school year), the percentage of Primary 1 children with no obvious dental caries was 78%. This percentage increased by 8% over a 5-year period from 2014/15 to 2018/19. In 2019/20, NHS Ayrshire & Arran had a lower percentage of Primary 1 children with no obvious dental caries at 70%, in comparison to the whole of Scotland (72%). A time trend from 2012/13 is shown below in Figure 60.

Figure 60: Percentage of Primary 1 children with no obvious dental caries by geographical area

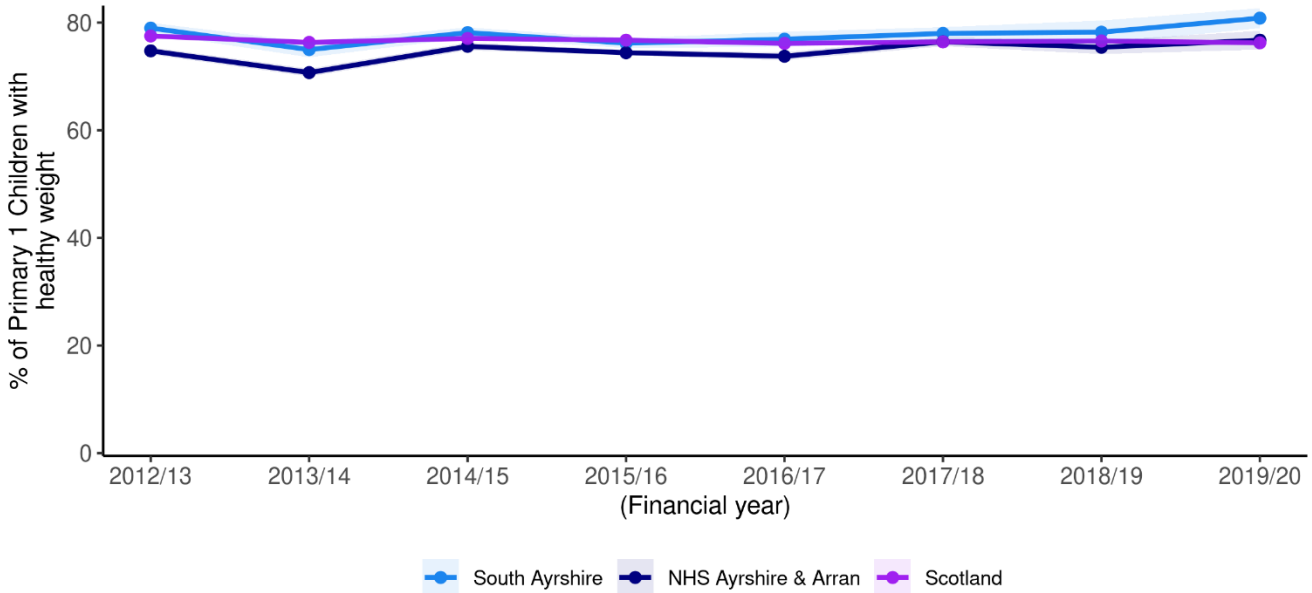


Source: ScotPHO

Healthy Weight

A trend of the percentage of Primary1 children with a healthy weight is shown below for South Ayrshire compared with Scotland and NHS Ayrshire & Arran. The 2019/20 percentage of children with a healthy weight within South Ayrshire was 81%, which was higher than the percentage observed in NHS Ayrshire & Arran (77%) and across Scotland (76%).

Figure 61: Percentage of Primary 1 children with healthy weight by geographical area

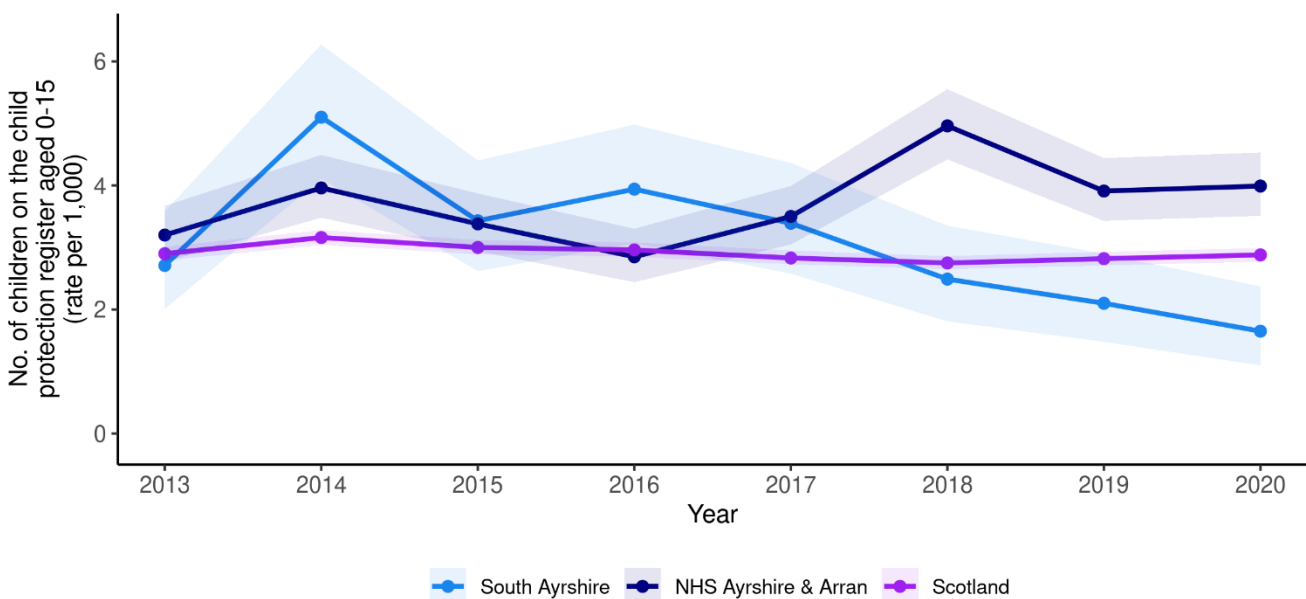


Source: ScotPHO

Protection Register

A trend of the number of children aged between 0 and 15 on the child protection register is shown below for South Ayrshire compared with Scotland and NHS Ayrshire & Arran. The number of children on the protection register in South Ayrshire decreased by 37% over a 7-year period from 2013 to 2020. The 2020 figure for South Ayrshire was 1.7 (rate per 1000).

Figure 62: Children on the child protection register

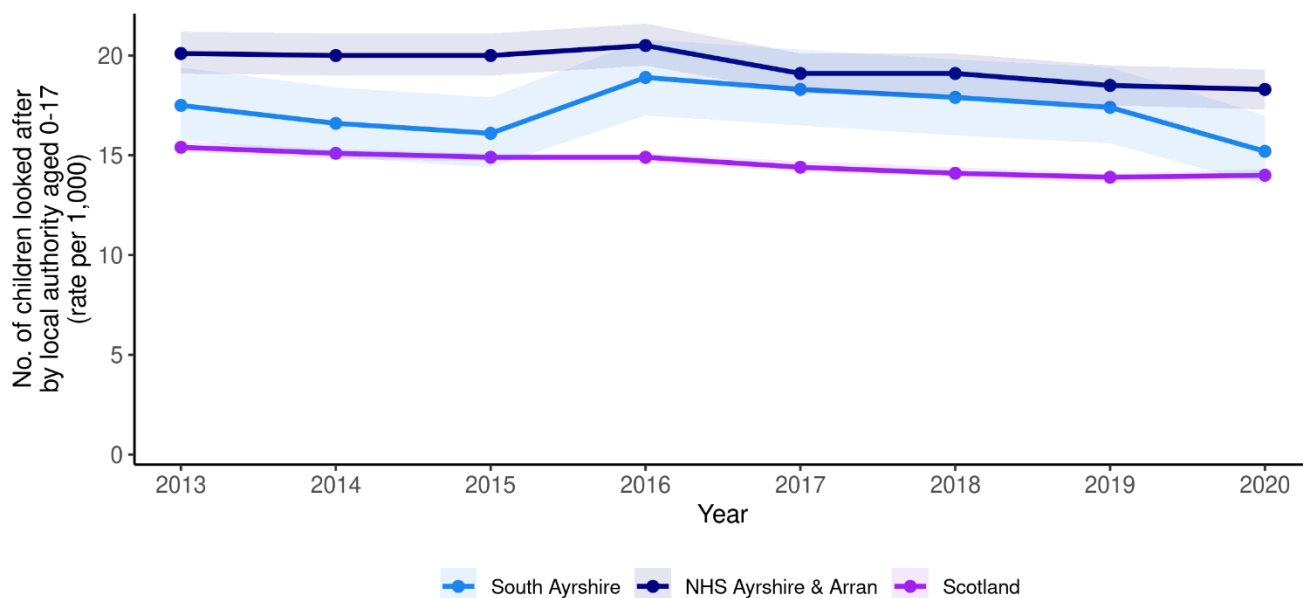


Source: ScotPHO

Looked after by Local Authority

A trend of the number of children aged 0-17 looked after by Local Authority is shown below in Figure 63 for South Ayrshire compared with Scotland and NHS Ayrshire & Arran. The number of children that were looked after in 2020 for East Ayrshire was 15 (rate per 1000), which was 7% higher than rates observed across the whole of Scotland.

Figure 63: Children looked after by Local Authority

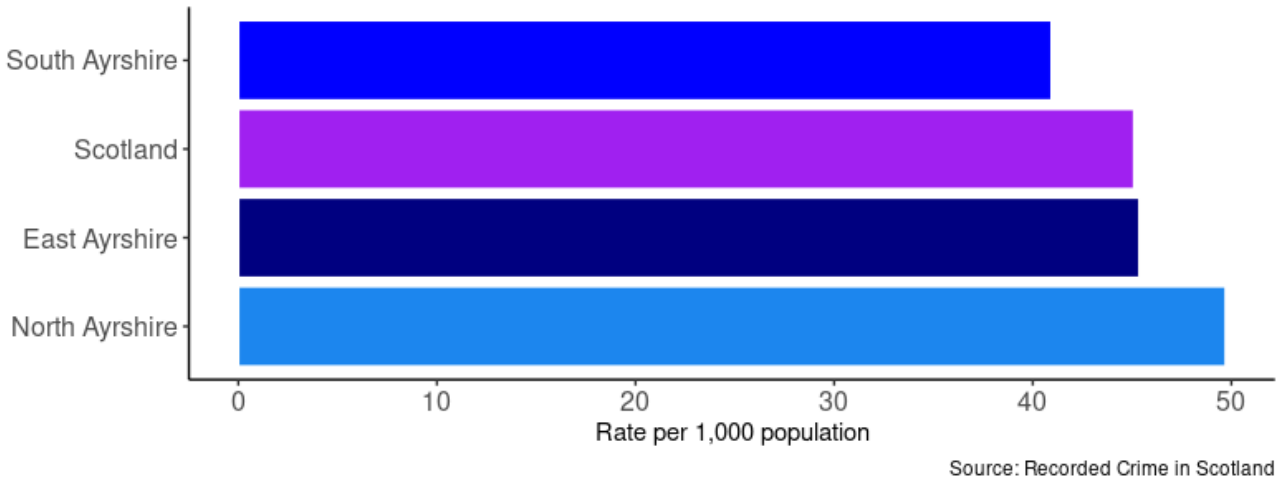


Source: ScotPHO

Crime and Fires

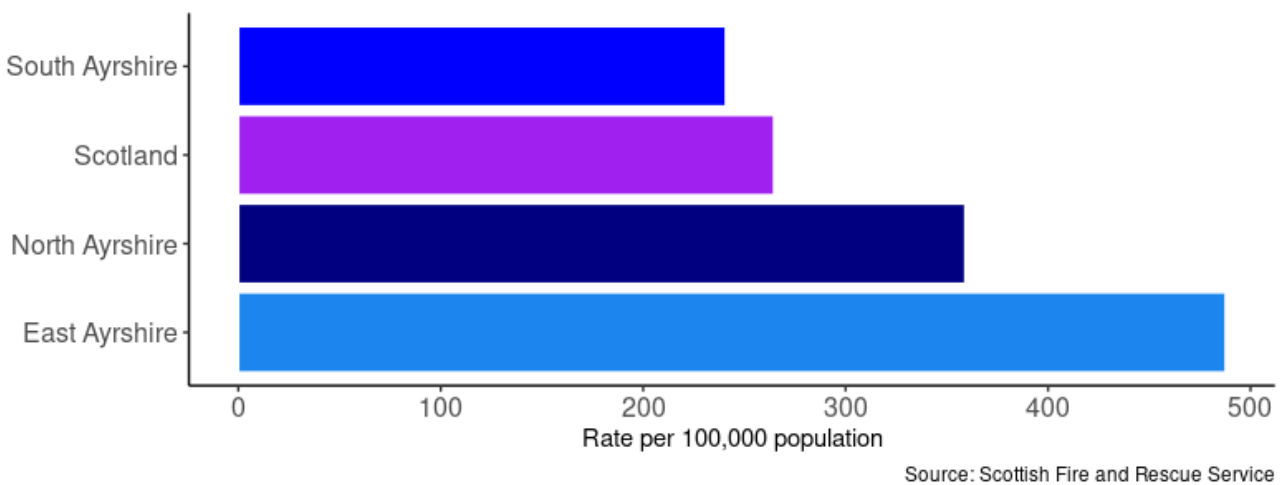
In 2020/21, the crime rate in South Ayrshire was 41 per 1,000 population. The chart below compares the rate by geography.

Figure 64: Crime Rate per 1,000 population (excludes miscellaneous offences and motor vehicle offences), 2020/21



In 2020/21, the rate of non-accidental fires in South Ayrshire was 240 per 100,000 population. The chart below compares the rate by geography.

Figure 65: Non-accidental fires per 100,000 population, 2020/21



Footnotes

1. To explore how the population in South Ayrshire is expected to change in the future, the percent changes in population projection to 2025 for South Ayrshire by age group and gender were calculated from the NRS Local Authority Population Projections.
2. Care Home Data included in the Services Map and Table was sourced from the [Care Inspectorate](#). [GP Practice](#) data from April 2020, and [Hospital](#) and [A&E](#) data was sourced from Public Health Scotland Open Data. Only services that are within the physical boundary of the HSCP are included in the map and table, so there may be services outside South Ayrshire which people may use but are not shown.
3. The data used in General Health and Lifestyle & Risk factors sections (except for long-term conditions) of this locality profile are taken from [ScotPHO](#). There may be more recent data available for the indicators elsewhere.
4. Data taken from ScotPHO is often reported using the European Age-Sex Standardised Rate per 100,000. This allows for comparisons across different areas to be made. For more information on how these rates are calculated, please refer to www.isdscotland.org/Products-and-Services/GPD-Support/Population/Standard-Populations/
5. Physical long-term conditions data comes from the Source Linkage Files, and the conditions are identified using ICD-9 and ICD-10 codes in the diagnosis fields. Please note that the Source Linkage Files data only contains information on people who have had contact with the NHS through either inpatient admissions, outpatient attendances, daycase attendances, A&E attendances or through prescribed items, the data does not show all service users in Scotland who have been diagnosed with an LTC as not all of these individuals will have used these services. Also note that LTC rates are based on an adjusted population indicator in the Source Linkage Files so that population sizes are closer to the official estimates.

Appendices

Appendix 1: Indicator Definitions

Indicator	Definition
% last 6 months of Life Spent in a Community Setting	The percentage of time spent by people in their last 6 months of life in the community. Community includes care home residents as well as those living in their own home. Considers all hospital activity (e.g. geriatric long stay (GLS), mental health, acute). Inpatient activity with a care home location code recorded in SMR is included within the Community percentage for all years presented. This activity represents beds funded by the NHS which are located within a care home.
A&E Attendances	Attendance rates to A&E departments for patients by residence per 100,000 population. Includes all ages.
Alcohol-related hospital admissions	General acute inpatient and day case stays with diagnosis of alcohol misuse in any diagnostic position (ICD-10 code: E24.4, E51.2, F10, G31.2, G62.1, G72.1, I42.6, K29.2, K70, K85.2, K86.0, O35.4, P04.3, Q86.0, R78.0, T51.0, T51.1, T51.9, X45, X65, Y15, Y57.3, Y90, Y91, Z50.2, Z71.4, Z72.1). All rates have been standardised against the European standard population (ESP2013) and 2011-based population estimates.
Alcohol-specific deaths	Alcohol related deaths (based on new National Statistics definition): 5-year rolling average number and directly age-sex standardised rate per 100,000 population. (ICD-10 codes from the primary cause of death: E24.4, F10, G31.2, G62.1, G72.1, I42.6, K29.2, K70, K85.2, K86.0, Q86.0, R78.0, X45, X65, Y15).
Bowel Screening Uptake	Bowel screening uptake for all eligible men and women invited (aged 50-74): 3-year rolling average number percentage. Eligible men and women are posted a guaiac-based faecal occult blood test kit (FOBT) which should be completed at home. This involves collecting 2 samples from each of 3 separate bowel movements. The kit is returned in a pre paid envelope to the central screening centre in Dundee and tested for hidden traces of blood in the stool. Individuals who have a positive FOBT result are referred to their local hospital for assessment and, where appropriate, offered a colonoscopy as the first line of investigation.
Cancer Registrations	New cancer registrations: 3 year rolling average number and directly age-sex standardised rate per 100,000 population. All rates have been standardised against the European standard population (ESP2013) and 2011-base population estimates. ICD10: C00-C96 excluding C44 (principal diagnosis only).
Children looked after by local authority	Children looked after by the local authority; number and rate per 1,000 children aged 0-17 years.

Child protection register	Children on the child protection register; number and rate per 1,000 children under 16 years.
Delayed Discharges	Number of days people aged over 18 spend in hospital when they are ready to be discharged per 100,000 population. This has been separated into two indicators – one for acute specialty and one for mental health specialty stays.
Drug-related hospital admissions	General acute inpatient and day case stays with diagnosis of drug misuse in any diagnostic position (ICD10: F11-F16, F18, F19, T40.0-T40.9), 3-year rolling average number and directly age-sex standardised rate per 100,000 population. All rates have been standardised against the European standard population (ESP2013) and 2011-based population estimates.
Emergency Admissions	Rate of acute emergency (non-elective) admissions of patients of all ages per 100,000 population. This has been separated into two indicators – one for acute specialty and one for mental health specialty stays.
Fall Admissions	Rates of emergency admissions (non-elective) of patients of all ages where a fall has been logged as an ICD-10 code (searched for in all diagnostic positions) – acute specialties only.
Healthy Life Expectancy (HLE)	Healthy life expectancy (HLE) is an estimate of the number of years lived in 'very good' or 'good' general health, based on how individuals perceive their state of health at the time of completing the annual population survey (APS).
Life expectancy, females	Estimated female life expectancy at birth in years, multi-year average (over 3 years for NHS Boards and Local Authorities, 5 years for Intermediate zones) Mortality data are based on year of registration. They also include non-Scottish residence so the number of deaths match those produced by NRS.
Life Expectancy, males	Estimated male life expectancy at birth in years, multi-year average (over 3 years for NHS Boards and Local Authorities, 5 years for Intermediate zones) Mortality data are based on year of registration. They also include non-Scottish residence so the number of deaths match those produced by NRS.
Mothers Breastfeeding at 6-8 week review	Number of babies reported by parent as being exclusively breastfed at 6-8 week review; 3-year rolling average number and percentage of all babies with a valid feeding status recorded at 6-8 week review.
Mothers smoking during Pregnancy	Women with known smoking status at 1st antenatal booking appointment who are recorded as a 'current smoker': 3-year rolling average number and percentage of all women with a known smoking status at first booking (those with a smoking status of 'unknown' have been excluded).
Physical Long-Term Conditions	Health conditions that last a year or longer, impact a person's life, and may require ongoing care and support. The LTCs presented are: Arthritis, Atrial Fibrillation, Cancer, Coronary Heart Disease, Chronic Obstructive Pulmonary Disease (COPD),

	Cerebrovascular Disease, Dementia, Diabetes, Epilepsy, Heart Failure, Liver Failure, Multiple Sclerosis, Parkinson's, and Renal Failure.
Population prescribed drugs for anxiety/depression/psychosis	Estimated number and percentage of population being prescribed drugs for anxiety, depression or psychosis.
Potentially Preventable Admissions (PPA)	Emergency admissions (non-elective) of patients of all ages where specific diagnoses are assigned as preventative - please see complete list of ICD-10 codes included in Appendix 2.
Primary 1 Children with no obvious dental caries	Number and percentage of Primary 1 children receiving a letter 'C' (no obvious decay experience but should continue to see the family dentist on a regular basis) at basic inspection.
Primary 1 Children with healthy weight	Number and percentage of Primary 1 children (with a valid height and weight recorded) whose BMI is between the 5% and 95% of the 1990 UK reference range for their age and sex.
Readmissions (28 day)	The rate of readmissions of all adults (18+) within 28 days of an emergency admission per 1,000 discharges. This has been separated into two indicators – one for acute specialty and one for mental health specialty stays.
Teenage Pregnancies	Pregnancies in under 20s; 3-year rolling average number and crude rate per 1,000 females aged 15-19 years.
Unscheduled Bed days	Rate of acute unscheduled bed days of patients of all ages per 100,000 population. Takes the bed days spent only within the year of measurement – stays that overlap financial years will have their respective days counted either side. This has been separated into two indicators – one for acute speciality and one for mental health specialty stays.
Unscheduled Care in Mental Health Hospitals	Mental health admission data is taken from SMR04, which holds records on patients receiving inpatient care in mental health (psychiatric) facilities. Episodes beginning with a transfer have also been included in these figures, as well as emergency admissions as many of these episodes will have started as unplanned acute admission. Therefore the initial unscheduled admission need not have been to a mental health long stay speciality.
6in1 Immunisation	Immunisation uptake at 24 months for 5 in 1 (Diphtheria, Pertussis, Tetanus, Polio, Hib) and 6-in-1 (from 1st October 2017), which also protects against Hepatitis B: 3-year rolling average number and percentage of children of this age.
24 months MMR Immunisation	Immunisation uptake at 24 months for - MMR (measles, mumps and rubella): 3-year rolling average number and percentage of children of this age.

Appendix 2: Conditions included as Potentially Preventable Admissions (PPAs)

Condition	ICD10 codes included	Comments
Ear Nose And Throat	H66, J028, J029, J038, J039, J06, J321	NA
Dental	K02, K03, K04, K05, K06, K08	NA
Convulsions And Epilepsy	G40, G41, R56, O15	NA
Gangrene	R02	NA
Nutritional Deficiencies	E40, E41, E43, E550, E643, M833	NA
Dehydration And Gastroenteritis	E86, K522, K528, K529	NA
Pyelonephritis	N10, N11, N12	NA
Perforated Bleeding Ulcer	K250, K251, K252, K254, K255, K256, K260, K261, K262, K264, K265, K266, K270, K271, K272, K274, K275, K276, K280, K281, K282, K284, K285, K286	Excludes episodes with following main OPCS4 codes: S06, S57, S68, S70, W90, X11
Cellulitis	L03, L04, L080, L088, L089, L980	NA
Pelvic Inflammatory Disease	N70, N73	NA
Influenza And Pneumonia	J10, J11, J13, J181	NA
Other Vaccine Preventable	A35, A36, A370, A379, A80, B05, B06, B161, B169, B26	NA
Iron Deficiency	D501, D508, D509	NA
Asthma	J45, J46	NA
Diabetes Complications	E100, E101, E102, E103, E104, E105, E106, E107, E108, E110, E111, E112, E113, E114, E115, E116, E117, E118, E120, E121, E122, E123, E124, E125, E126, E127, E128, E130, E131, E132, E133, E134, E135, E136, E137, E138, E140, E141, E142, E143, E144, E145, E146, E147, E148	NA
Hypertension	I10, I119	Exclude episodes with following main OPCS4 codes: K01 - K50, K56, K60 - K61
Angina	I20	Exclude episodes with main OPCS4

PHS LIST HSCP Profiles

		codes: K40, K45 K49, K60, K65, K66
COPD	J20, J41, J42, J43, J44, J47	J20 only included if secondary diagnosis has one of J41 - J44, J47
Congestive Heart Failure	I110, I50, J81	Exclude episodes with following main OPCS4 codes: K01 - K50, K56, K60 - K61