

<b>South Ayrshire Health and Social Care Partnership</b>	<b>Strategic Planning Advisory Group</b>	
<b>Held on</b>	<b>20<sup>th</sup> December 2022</b>	
<b>Agenda Item:</b>	<b>6</b>	
<b>Title:</b>	<b>Getting it Right for Everyone</b>	
<b>Summary:</b> The purpose of this report is to update SPAG members on the Getting it Right for Everyone (GIRFE) initiative at national and local level.		
<b>Author:</b>	<b>Phil White, Partnership Facilitator</b>	
<b>Recommendations:</b>  SPAG members are asked to note the report		
<b>Route to meeting:</b>  <b>Report for SPAG.</b>		
<b>Directions:</b>	<b>Implications:</b>	
1. No Directions Required <input type="checkbox"/>	Financial	<input type="checkbox"/>
2. Directions to NHS Ayrshire & Arran <input type="checkbox"/>	HR	<input type="checkbox"/>
3. Directions to South Ayrshire Council <input type="checkbox"/>	Legal	<input type="checkbox"/>
4. Directions to both SAC & NHS <input type="checkbox"/>	Equalities	<input type="checkbox"/>
	Sustainability	<input type="checkbox"/>
	Policy	<input type="checkbox"/>
	ICT	<input type="checkbox"/>

## GETTING IT RIGHT FOR EVERYONE (GIRFE)

### 1. PURPOSE OF REPORT

- 1.1 The purpose of this report is to update SPAG members on the Getting it Right for Everyone (GIRFE) initiative at national and local level.

### 2. RECOMMENDATION

- 2.1 It is recommended that SPAG members note the update re GIRFE**

### 3. BACKGROUND INFORMATION

- 3.1 Building on the long term success of the Getting it Right for Every Child (GIRFEC) approach, Scottish Government is wishing to pilot a new generic approach – Getting it Right for Everyone (GIRFE).
- 3.2 In November they sought partner HSCPs who would be interested in being pathfinder sites for GIRFE and with thoughts about the specific population group they would focus on.
- 3.3 The HSCPs selected as pathfinders are East Ayrshire, Orkney, Angus, Edinburgh, East Renfrewshire, Fife, South Ayrshire, Argyll and Bute, Aberdeenshire and North Lanarkshire.
- 3.4 South Ayrshire's focus has been agreed as older people with particular reference to frailty.
- 3.5 Other HSCPs are focusing on People in Prisons, People in Addiction Services, People registered at Deep End Practices and People with multiple or complex needs; and young people in transition from GIRFE to GIRFEC

### 4. REPORT

- 4.1 **GIRFE** has been defined as

**‘a multi-agency approach of support and services from young adulthood to end of life care.’**

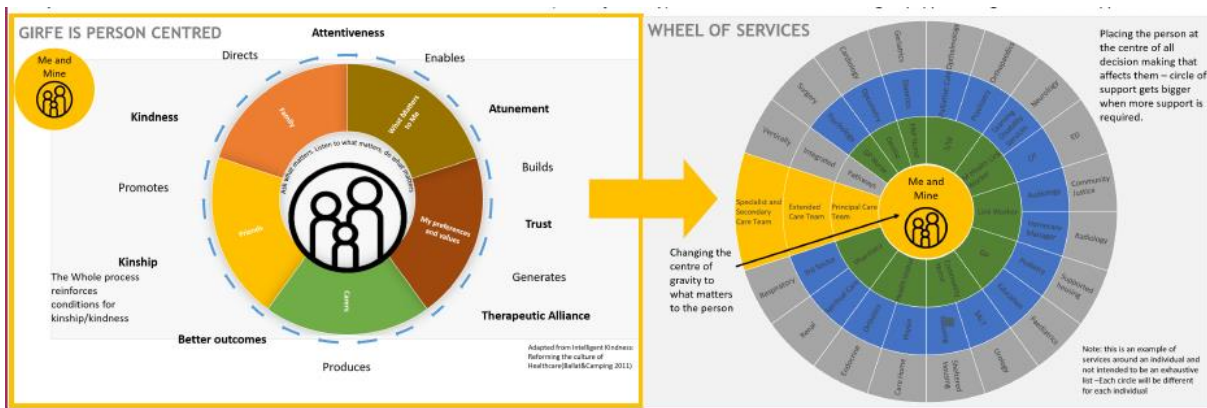
- 4.2 GIRFE is a proposed **multi-agency approach of support** and services from young **adulthood** to end of life care.
- 4.3 GIRFE will help define the adult's journey through **individualised support and services**, and will respect the role that everyone involved has in providing **support planning** and support.
- 4.4 Too often, adults and their families are excluded from assessment and support processes by complex bureaucracy. GIRFE is about providing a more

**personalised way to access help and support** when it is needed – placing the **person at the centre** of decisions that affect them to achieve the best **outcomes**, with a **joined-up, coherent and consistent** multi-agency approach regardless of the support needed at any stage of life.

#### 4.5 GIRFE principles:

- **Is focused on individual care needs** – it ensures that every person is empowered and involved in multi-disciplinary decision making and the support available to them.
- **Is based on an understanding of the physical and mental well-being of individuals in their current situation** – it adopts a holistic approach to ensure that individual needs are taken into account and that appropriate support is provided while acknowledging that a person’s needs will vary over time.
- **Is based on early intervention** -it aims to ensure individual needs are identified, and appropriate support provided, as early as possible.
- **Requires joined-up working/information sharing** - it is about individual people and the services that they require being enabled to work together in a coordinated way to meet specific needs and improve their wellbeing.
- **Is based on a human rights approach** – it is about ensuring that both the standards and the principles of human rights are integrated into policymaking as well as the day to day running

#### 4.6 The **GIRFE** approach is set out in the diagram below:



There is a strong emphasis on placing the person at the heart of decision making and building an MDT response around their needs.

#### 4.7 The **GIRFE** approach is supported by a Scottish Government unit with support from the officers of the Chief Medical Officer, Chief Nurse, Chief AHP Adviser and Chief Social Work Adviser.

#### 4.8 The exact programme that will be supported is the subject of an initial meeting of all sites on 14<sup>th</sup> December 2022 followed in early 2023 with 4 'Design School'

days. At this point the exact South Ayrshire programme that will be supported and the associated arrangements and supports will be clearer.

## **Milestones**

### **4.9 Nationally the following milestones have been set out:**

- December 2022– March 2023—the pathfinders work collectively to co-design the implementation of GIRFE
- March/April 2023—Pathfinders “go live” and implement the GIRFE practice model. Alongside this a national toolkit is available to support pace of scale and spread. Learning networks will support implementation throughout Scotland
- Spring/Summer 2023— work with areas to develop their timeline for the full implementation of GIRFE
- Summer 2025—aim to implement GIRFE across Scotland.

## **5. STRATEGIC CONTEXT**

The GIRFE approach resonates well with many of our Strategic Objectives and out need to develop an Ageing well strategy.

## **6. IMPLICATIONS**

### **6.1 Financial Implications**

6.1.1 No implications

### **6.2 Human Resource Implications**

6.2.1 No implications

### **6.3 Legal Implications**

6.3.1 No implications

### **6.4 Equalities implications**

6.4.1 No implications

### **6.5 Sustainability implications**

6.5.1 No implications

### **6.6 Clinical/professional assessment**

6.6.1 No assessment needed

## **7. CONSULTATION AND PARTNERSHIP WORKING**

The local work is very much at an initial ‘forming’ stage and will need good engagement when the exact programme becomes clearer

## 8. RISK ASSESSMENT

Low risk.

### **REPORT AUTHOR AND PERSON TO CONTACT**

Name: Phil White

Phone number: 07816 532279

Email address: [phil.white@aapct.scot.nhs.uk](mailto:phil.white@aapct.scot.nhs.uk)